

For Research Use Only

# NR1H3 Polyclonal antibody

Catalog Number: 14351-1-AP

Featured Product

96 Publications



## Basic Information

### Catalog Number:

14351-1-AP

### Size:

150ul, Concentration: 1000 ug/ml by Nanodrop;

### Source:

Rabbit

### Isotype:

IgG

### Immunogen Catalog Number:

AG5697

### GenBank Accession Number:

BC041172

### GeneID (NCBI):

10062

### UNIPROT ID:

Q13133

### Full Name:

nuclear receptor subfamily 1, group H, member 3

### Calculated MW:

50 kDa

### Observed MW:

45-50 kDa

### Purification Method:

Antigen affinity purification

### Recommended Dilutions:

WB 1:2000-1:10000

IHC 1:500-1:2000

## Applications

### Tested Applications:

WB, IHC, ELISA

### Cited Applications:

WB, IHC, IF, IP, ChIP

### Species Specificity:

human, mouse, rat

### Cited Species:

human, mouse, rat, pig, rabbit

**Note-IHC: suggested antigen retrieval with TE buffer pH 9.0; (\*) Alternatively, antigen retrieval may be performed with citrate buffer pH 6.0**

### Positive Controls:

WB : HL-60 cells, COLO 320 cells, mouse liver tissue, rat liver tissue, THP-1 cells

IHC : rat liver tissue,

## Background Information

NR1H3, also known as LXRA, is a liver X receptors, which form a subfamily of the nuclear receptor superfamily and are key regulators of macrophage function, controlling transcriptional programs involved in lipid homeostasis and inflammation. It's also a ligand-activated LXRs and forms heterodimers with retinoid X receptor, then participates in regulating expression of target genes containing LXR response elements. NR1H3 exists some isoforms with MV 51 kDa and 43-45 kDa.

## Notable Publications

Author	Pubmed ID	Journal	Application
Zhongwen Feng	33182043	Int Immunopharmacol	WB
Yong Huang	32938225	Am J Physiol Cell Physiol	WB
Fenghua Guo	30224060	Biochem Biophys Res Commun	WB

## Storage

### Storage:

Store at -20°C. Stable for one year after shipment.

### Storage Buffer:

PBS with 0.02% sodium azide and 50% glycerol, pH7.3

Aliquoting is unnecessary for -20°C storage

\*\*\* 20ul sizes contain 0.1% BSA

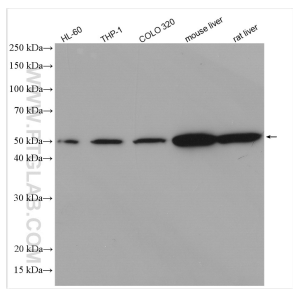
For technical support and original validation data for this product please contact:

T: 1 (888) 4PTGLAB (1-888-478-4522) (toll free in USA), or 1(312) 455-8498 (outside USA)

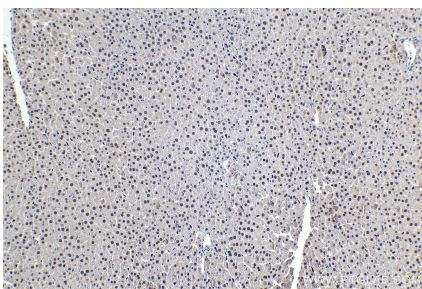
E: proteintech@ptglab.com  
W: ptglab.com

This product is exclusively available under Proteintech Group brand and is not available to purchase from any other manufacturer.

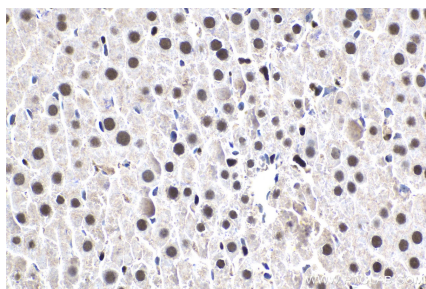
## Selected Validation Data



HL-60 cells were subjected to SDS PAGE followed by western blot with 14351-1-AP (NR1H3 antibody) at dilution of 1:5000 incubated at room temperature for 1.5 hours.



Immunohistochemical analysis of paraffin-embedded rat liver tissue slide using 14351-1-AP (NR1H3 antibody) at dilution of 1:1000 (under 10x lens). Heat mediated antigen retrieval with Tris-EDTA buffer (pH 9.0).



Immunohistochemical analysis of paraffin-embedded rat liver tissue slide using 14351-1-AP (NR1H3 antibody) at dilution of 1:1000 (under 40x lens). Heat mediated antigen retrieval with Tris-EDTA buffer (pH 9.0).