

For Research Use Only

# ST6GAL1 Polyclonal antibody

Catalog Number: 14355-1-AP

Featured Product

12 Publications



## Basic Information

### Catalog Number:

14355-1-AP

### Size:

150ul, Concentration: 450 ug/ml by Nanodrop;

### Source:

Rabbit

### Isotype:

IgG

### Immunogen Catalog Number:

AG5705

### GenBank Accession Number:

BC040009

### GeneID (NCBI):

6480

### UNIPROT ID:

P15907

### Full Name:

ST6 beta-galactosamide alpha-2,6-sialyltransferase 1

### Calculated MW:

47 kDa

### Observed MW:

43-45 kDa, 50-70 kDa

### Purification Method:

Antigen affinity purification

### Recommended Dilutions:

WB 1:1000-1:6000

IP 0.5-4.0 ug for 1.0-3.0 mg of total protein lysate

IHC 1:200-1:800

## Applications

### Tested Applications:

WB, IHC, IP, ELISA

### Cited Applications:

WB, IHC, IF

### Species Specificity:

human, mouse

### Cited Species:

human, mouse, rat

**Note-IHC: suggested antigen retrieval with TE buffer pH 9.0; (\*) Alternatively, antigen retrieval may be performed with citrate buffer pH 6.0**

### Positive Controls:

**WB** : HepG2 cells, HuH-7 cells, Jurkat cells, mouse spleen tissue, U-937 cells, L02 cells

**IP** : Raji cells,

**IHC** : human colon cancer tissue, human skin tissue, human ovary cancer tissue

## Background Information

ST6GAL1 ( $\beta$ -galactoside  $\alpha$ -2-6 sialyl transferase1; also known as ST6N or CD75) is a sialyltransferase mediating the glycosylation of proteins and lipids to form functionally important glycoproteins and glycolipids in the Golgi compartment. It is principally expressed in liver, placenta, and skeletal muscle. ST6GAL1 undergoes proteolytic process to generate soluble form from membrane form. Western blot analysis of human liver using this antibody detects both isoforms between 43-50 kDa. Higher molecular weight of bands around 50-70 kDa can also be observed with glycosylation modification. (PMID: 15049997, 23358684)

## Notable Publications

Author	Pubmed ID	Journal	Application
Jun Wang	34745942	Front Oncol	WB
Ruijia Liu	36238765	J Inflamm Res	IHC, WB
Emma Kurz	34634466	Mol Cell Proteomics	IHC, IF

## Storage

### Storage:

Store at -20°C. Stable for one year after shipment.

### Storage Buffer:

PBS with 0.02% sodium azide and 50% glycerol, pH7.3

Aliquoting is unnecessary for -20°C storage

\*\*\* 20ul sizes contain 0.1% BSA

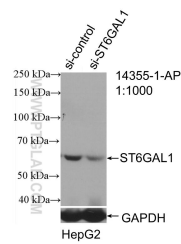
For technical support and original validation data for this product please contact:

T: 1 (888) 4PTGLAB (1-888-478-4522) (toll free in USA), or 1(312) 455-8498 (outside USA)

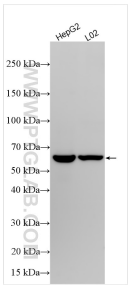
E: [proteintech@ptglab.com](mailto:proteintech@ptglab.com)  
W: [ptglab.com](http://ptglab.com)

This product is exclusively available under Proteintech Group brand and is not available to purchase from any other manufacturer.

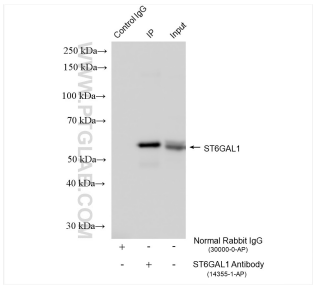
Selected Validation Data



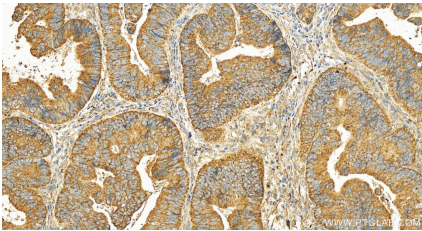
WB result of ST6GAL1 antibody (14355-1-AP; 1:1000; incubated at room temperature for 1.5 hours) with sh-Control and sh-ST6GAL1 transfected HepG2 cells.



Various lysates were subjected to SDS PAGE followed by western blot with 14355-1-AP (ST6GAL1 antibody) at dilution of 1:3000 incubated at room temperature for 1.5 hours.



IP result of anti-ST6GAL1 (IP:14355-1-AP, 4ug; Detection:14355-1-AP 1:3000) with Raji cells lysate 1800 ug.



Immunohistochemical analysis of paraffin-embedded human colon cancer tissue slide using 14355-1-AP (ST6GAL1 antibody) at dilution of 1:400 (under 20x lens). Heat mediated antigen retrieval with Tris-EDTA buffer (pH 9.0).