

For Research Use Only

RBM6 Polyclonal antibody

Catalog Number: 14360-1-AP

3 Publications



Basic Information

Catalog Number:

14360-1-AP

Size:

150ul, Concentration: 700 ug/ml by Nanodrop;

Source:

Rabbit

Isotype:

IgG

Immunogen Catalog Number:

AG5743

GenBank Accession Number:

BC046643

GeneID (NCBI):

10180

UNIPROT ID:

P78332

Full Name:

RNA binding motif protein 6

Calculated MW:

129 kDa

Observed MW:

129 kDa

Purification Method:

Antigen affinity purification

Recommended Dilutions:

WB 1:500-1:2000

IP 0.5-4.0 ug for 1.0-3.0 mg of total protein lysate

IHC 1:20-1:200

IF/ICC 1:50-1:500

Applications

Tested Applications:

WB, IHC, IF/ICC, IP, ELISA

Cited Applications:

WB, IHC, RIP

Species Specificity:

human, mouse, rat

Cited Species:

human

Note-IHC: suggested antigen retrieval with TE buffer pH 9.0; (*) Alternatively, antigen retrieval may be performed with citrate buffer pH 6.0

Positive Controls:

WB : HepG2 cells, mouse spleen tissue

IP : HeLa cells,

IHC : human pancreas cancer tissue,

IF/ICC : HeLa cells,

Background Information

RBM6, also named as DEF3, is a 1123 amino acid protein, which may interact with FAM168B. RBM6 is expressed ubiquitously in adults tissues. RBM6 specifically binds poly(G) RNA homopolymers in vitro. RBM6 exists some isoforms with MV 129 kDa, 69 kDa, and 59 kDa. onversely, fetal thymus and adult kidney express very little RBM6. In the hemopoietic system of mice, the expression of RBM6 is downregulated upon differentiation of progenitor cells into granulocytes but persists during macrophage development.

Notable Publications

Author	Pubmed ID	Journal	Application
Baojun Duan	31207145	Proteomics Clin Appl	IHC
Ruoyang Liu	39900560	J Cell Mol Med	WB
Ping Peng	39344314	Front Biosci (Landmark Ed)	RIP

Storage

Storage:

Store at -20°C. Stable for one year after shipment.

Storage Buffer:

PBS with 0.02% sodium azide and 50% glycerol pH 7.3.

Aliquoting is unnecessary for -20°C storage

*** 20ul sizes contain 0.1% BSA

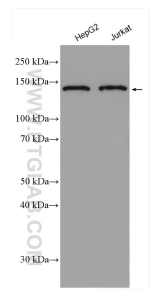
For technical support and original validation data for this product please contact:

T: 1 (888) 4PTGLAB (1-888-478-4522) (toll free in USA), or 1(312) 455-8498 (outside USA)

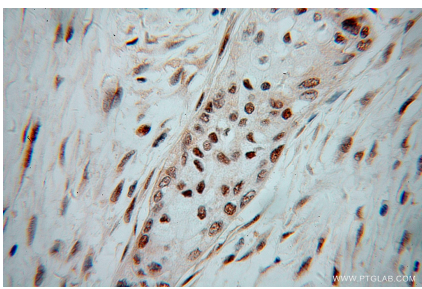
E: proteintech@ptglab.com
W: ptglab.com

This product is exclusively available under Proteintech Group brand and is not available to purchase from any other manufacturer.

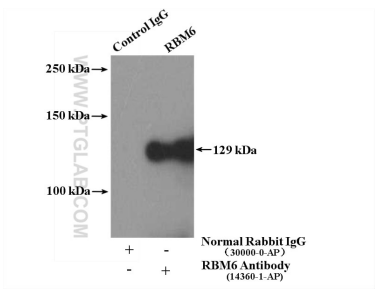
Selected Validation Data



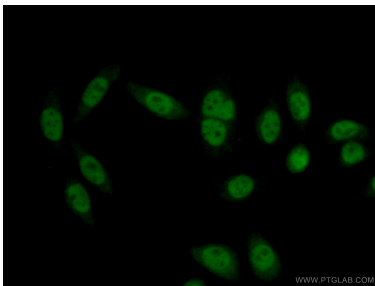
HepG2 cells were subjected to SDS PAGE followed by western blot with 14360-1-AP (RBM6 antibody) at dilution of 1:1000 incubated at room temperature for 1.5 hours.



Immunohistochemical analysis of paraffin-embedded human pancreas cancer using 14360-1-AP (RBM6 antibody) at dilution of 1:100 (under 40x lens).



IP result of anti-RBM6 (IP:14360-1-AP, 4ug; Detection:14360-1-AP 1:500) with HeLa cells lysate 2000ug.



Immunofluorescent analysis of (10% Formaldehyde) fixed HeLa cells using 14360-1-AP (RBM6 antibody) at dilution of 1:50 and Alexa Fluor 488-conjugated Goat Anti-Rabbit IgG(H+L).