

For Research Use Only

# FAM175A Polyclonal antibody

Catalog Number: 14366-1-AP

1 Publications



## Basic Information

Catalog Number:

14366-1-AP

Size:

150ul, Concentration: 600 ug/ml by Nanodrop and 333 ug/ml by Bradford method using BSA as the standard;

Source:

Rabbit

Isotype:

IgG

Immunogen Catalog Number:

AG5688

GenBank Accession Number:

BC039573

GeneID (NCBI):

84142

UNIPROT ID:

Q6UWZ7

Full Name:

family with sequence similarity 175, member A

Calculated MW:

47 kDa

Observed MW:

46 kDa

Purification Method:

Antigen affinity purification

Recommended Dilutions:

WB 1:500-1:3000

IF/ICC 1:50-1:500

## Applications

Tested Applications:

WB, IF/ICC, ELISA

Cited Applications:

WB

Species Specificity:

human

Cited Species:

human

Positive Controls:

WB : HEK-293T cells, MCF-7 cells, human testis tissue, Raji cells, Hela cells, Jurkat cells

IF/ICC : HeLa cells, MCF-7 cells

## Background Information

The family with sequence similarity 175 member A gene (FAM175A; also known as ABRA1, CCDC98 and ABRA1), a member of the DNA repair family, contributes to the BRCA1 (BRCA1 DNA repair associated)-dependent DNA damage response and is associated with age at natural menopause.

## Notable Publications

Author	Pubmed ID	Journal	Application
Caoliao Qin	37638744	Nucleic Acids Res	WB

## Storage

Storage:

Store at -20°C. Stable for one year after shipment.

Storage Buffer:

PBS with 0.02% sodium azide and 50% glycerol pH 7.3.

Aliquoting is unnecessary for -20°C storage

\*\*\* 20ul sizes contain 0.1% BSA

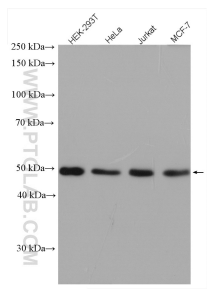
For technical support and original validation data for this product please contact:

T: 1 (888) 4PTGLAB (1-888-478-4522) (toll free in USA), or 1(312) 455-8498 (outside USA)

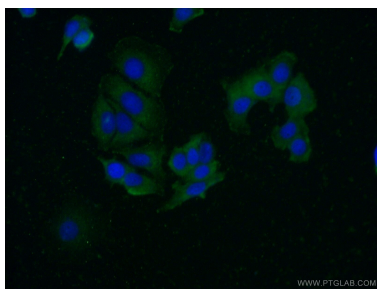
E: [proteintech@ptglab.com](mailto:proteintech@ptglab.com)  
W: [ptglab.com](http://ptglab.com)

This product is exclusively available under Proteintech Group brand and is not available to purchase from any other manufacturer.

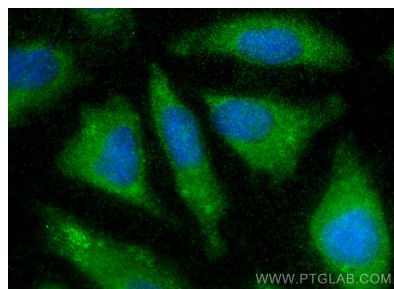
## Selected Validation Data



HEK-293T cells were subjected to SDS PAGE followed by western blot with 14366-1-AP (FAM175A antibody) at dilution of 1:1500 incubated at room temperature for 1.5 hours.



Immunofluorescent analysis of (-20°C Ethanol) fixed MCF-7 cells using 14366-1-AP (FAM175A antibody) at dilution of 1:50 and Alexa Fluor 488-conjugated AffiniPure Goat Anti-Rabbit IgG(H+L).



Immunofluorescent analysis of (-20°C Methanol) fixed HeLa cells using FAM175A antibody (14366-1-AP) at dilution of 1:200 and CoraLite®488-Conjugated Goat Anti-Rabbit IgG(H+L) (SA00013-2).