

For Research Use Only

MTMR2 Polyclonal antibody

Catalog Number: 14372-1-AP

Featured Product



Basic Information

Catalog Number:

14372-1-AP

Size:

150ul, Concentration: 400 ug/ml by Nanodrop and 207 ug/ml by Bradford method using BSA as the standard;

Source:

Rabbit

Isotype:

IgG

Immunogen Catalog Number:

AG5745

GenBank Accession Number:

BC052990

GeneID (NCBI):

8898

UNIPROT ID:

Q13614

Full Name:

myotubularin related protein 2

Calculated MW:

73 kDa

Observed MW:

66-73 kDa

Purification Method:

Antigen affinity purification

Recommended Dilutions:

WB 1:500-1:2000

IP 0.5-4.0 ug for 1.0-3.0 mg of total protein lysate

IHC 1:100-1:400

Applications

Tested Applications:

WB, IP, IHC, ELISA

Species Specificity:

human, mouse, rat

Note-IHC: suggested antigen retrieval with TE buffer pH 9.0; (*) Alternatively, antigen retrieval may be performed with citrate buffer pH 6.0

Positive Controls:

WB: HeLa cells, human cerebellum tissue, NIH/3T3 cells

IP: mouse cerebellum tissue,

IHC: human endometrial cancer tissue, human cerebellum tissue

Background Information

MTMR2(myotubularin-related protein 2) is also named as KIAA1073 and belongs to the non-receptor class myotubularin subfamily, which is characterized by the presence of a phosphatase domain. It may regulate vesicular trafficking in Schwann cells (PMID:17880751) and its reversible phosphorylation represents a critical mechanism for regulating the subcellular localization of MTMR2(PMID:21372139). MTMR2 is a 73 kDa protein in its monomeric form and exist as a dimer within cells and the protein re-localizes to membranes in hypo-osmotic settings(PMID:16399794). Defects in MTMR2 are the cause of Charcot-Marie-Tooth disease type 4B1 (CMT4B1). MTMR2 has two isoforms with the molecular mass of 73 and 66 kDa.

Storage

Storage:

Store at -20°C. Stable for one year after shipment.

Storage Buffer:

PBS with 0.02% sodium azide and 50% glycerol pH 7.3.

Aliquoting is unnecessary for -20°C storage

*** 20ul sizes contain 0.1% BSA

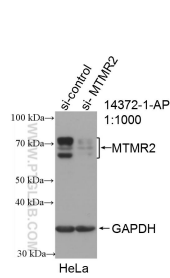
For technical support and original validation data for this product please contact:

T: 1 (888) 4PTGLAB (1-888-478-4522) (toll free in USA), or 1(312) 455-8498 (outside USA)

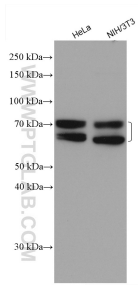
E: proteintech@ptglab.com
W: ptglab.com

This product is exclusively available under Proteintech Group brand and is not available to purchase from any other manufacturer.

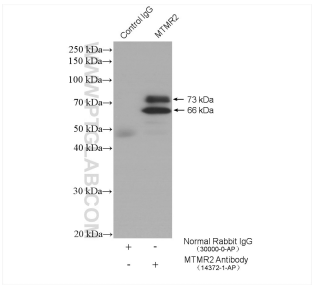
Selected Validation Data



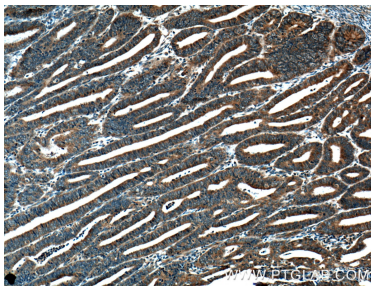
WB result of MTMR2 antibody (14372-1-AP; 1:1000; incubated at room temperature for 1.5 hours) with sh-Control and sh-MTMR2 transfected HeLa cells.



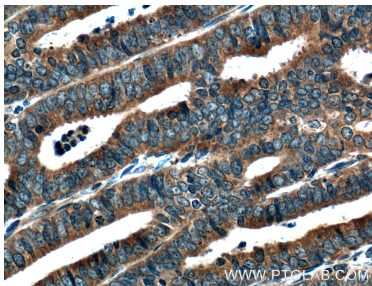
Various lysates were subjected to SDS PAGE followed by western blot with 14372-1-AP (MTMR2 antibody) at dilution of 1:1000 incubated at room temperature for 1.5 hours.



IP result of anti-MTMR2 (IP:14372-1-AP, 4ug; Detection:14372-1-AP 1:300) with mouse cerebellum tissue lysate 4000 ug.



Immunohistochemical analysis of paraffin-embedded human endometrial cancer tissue slide using 14372-1-AP (MTMR2 Antibody) at dilution of 1:200 (under 10x lens). Heat mediated antigen retrieval with Tris-EDTA buffer (pH 9.0).



Immunohistochemical analysis of paraffin-embedded human endometrial cancer tissue slide using 14372-1-AP (MTMR2 Antibody) at dilution of 1:200 (under 40x lens). Heat mediated antigen retrieval with Tris-EDTA buffer (pH 9.0).