

For Research Use Only

# PSMA2 Polyclonal antibody

Catalog Number: 14377-1-AP

3 Publications



## Basic Information

<b>Catalog Number:</b> 14377-1-AP	<b>GenBank Accession Number:</b> BC047697	<b>Purification Method:</b> Antigen affinity purification
<b>Size:</b> 150ul , Concentration: 350 ug/ml by Nanodrop and 260 ug/ml by Bradford method using BSA as the standard;	<b>GeneID (NCBI):</b> 5683	<b>Recommended Dilutions:</b> WB 1:500-1:1000 IHC 1:50-1:500 IF/ICC 1:20-1:200
<b>Source:</b> Rabbit	<b>UNIPROT ID:</b> P25787	
<b>Isotype:</b> IgG	<b>Full Name:</b> proteasome (prosome, macropain) subunit, alpha type, 2	
<b>Immunogen Catalog Number:</b> AG5753	<b>Calculated MW:</b> 26 kDa	
	<b>Observed MW:</b> 26 kDa	

## Applications

<b>Tested Applications:</b> WB, IHC, IF/ICC, ELISA	<b>Positive Controls:</b>
<b>Cited Applications:</b> WB, IHC	<b>WB :</b> NIH/3T3 cells, HEK-293 cells, HepG2 cells, mouse kidney tissue, PC-3 cells
<b>Species Specificity:</b> human, mouse, rat	<b>IHC :</b> human skeletal muscle tissue,
<b>Cited Species:</b> human	<b>IF/ICC :</b> HepG2 cells,
<b>Note-IHC: suggested antigen retrieval with TE buffer pH 9.0; (*) Alternatively, antigen retrieval may be performed with citrate buffer pH 6.0</b>	

## Background Information

PSMA2 (Proteasome subunit alpha type-2) is the essential subunit that contributes to the complete assembly of 20S proteasome complex, involved in the proteolytic degradation of most intracellular proteins. It is required in spermatogenesis and generation of a subset of MHC class I-presented antigenic peptides (PMID: 34711951, PMID: 27342858). Dysregulation of PSMA2 degradation leads to tumorigenesis including cervical cancer (PMID:33684886).

## Notable Publications

Author	Pubmed ID	Journal	Application
Pengyuan Wang	39145797	J Gastroenterol	WB
Guangwei Wang	38481252	J Ovarian Res	IHC
Baofu Ma	36632878	Acta Biomater	WB

## Storage

**Storage:**  
Store at -20°C. Stable for one year after shipment.  
**Storage Buffer:**  
PBS with 0.02% sodium azide and 50% glycerol pH 7.3.  
Aliquoting is unnecessary for -20°C storage

\*\*\* 20ul sizes contain 0.1% BSA

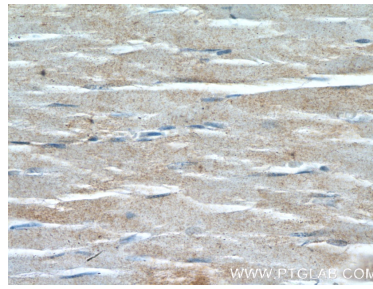
For technical support and original validation data for this product please contact:  
T: 1 (888) 4PTGLAB (1-888-478-4522) (toll free in USA), or 1(312) 455-8498 (outside USA)  
E: [proteintech@ptglab.com](mailto:proteintech@ptglab.com)  
W: [ptglab.com](http://ptglab.com)

This product is exclusively available under Proteintech Group brand and is not available to purchase from any other manufacturer.

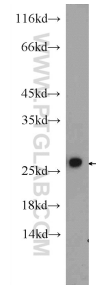
## Selected Validation Data



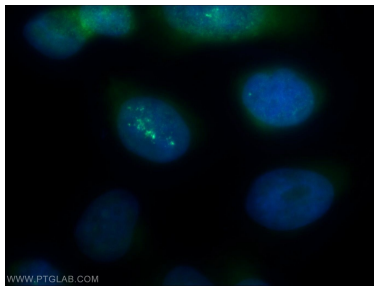
Immunohistochemical analysis of paraffin-embedded human skeletal muscle tissue slide using 14377-1-AP (PSMA2 antibody) at dilution of 1:200 (under 10x lens).



Immunohistochemical analysis of paraffin-embedded human skeletal muscle tissue slide using 14377-1-AP (PSMA2 antibody) at dilution of 1:200 (under 40x lens).



NIH/3T3 cells were subjected to SDS PAGE followed by western blot with 14377-1-AP (PSMA2 Antibody) at dilution of 1:600 incubated at room temperature for 1.5 hours.



Immunofluorescent analysis of HepG2 cells using 14377-1-AP (PSMA2 antibody) at dilution of 1:50 and Alexa Fluor 488-conjugated Goat Anti-Rabbit IgG(H+L).