

For Research Use Only

TAB2 Polyclonal antibody

Catalog Number: 14410-1-AP

Featured Product

15 Publications



Basic Information

Catalog Number: 14410-1-AP	GenBank Accession Number: BC035910	Purification Method: Antigen affinity purification
Size: 150ul , Concentration: 600 µg/ml by Nanodrop and 300 µg/ml by Bradford method using BSA as the standard;	GeneID (NCBI): 23118	Recommended Dilutions: WB 1:1000-1:4000 IP 0.5-4.0 ug for 1.0-3.0 mg of total protein lysate
Source: Rabbit	Full Name: mitogen-activated protein kinase kinase kinase 7 interacting protein 2	IHC 1:20-1:200 IF 1:20-1:200
Isotype: IgG	Calculated MW: 76 kDa	
Immunogen Catalog Number: AG5742	Observed MW: 77 kDa	

Applications

Tested Applications:
FC, IF, IHC, IP, WB, ELISA

Cited Applications:
IF, IHC, WB

Species Specificity:
human, mouse, rat

Cited Species:
human, rat, mouse

Note-IHC: suggested antigen retrieval with TE buffer pH 9.0; (*) Alternatively, antigen retrieval may be performed with citrate buffer pH 6.0

Positive Controls:

WB : L02 cells, C6 cells, human liver tissue, HepG2 cells, mouse liver tissue, rat liver tissue, Raji cells

IP : HepG2 cells,

IHC : human malignant melanoma tissue,

IF : HepG2 cells,

Background Information

Tab2 has a role in the inflammatory signal transduction pathway and is involved in the reversal of NCoR-dependent and NFkB- or APP-mediated gene repression and androgen antagonist response. Besides, it is identified as a cofactor for ERBB4 to assemble NCoR corepressor complex in response to neuregulin [PMID:16469706]. It also functions as an adaptor that links TAK1 and TRAF6 in response to interleukin-1 β (IL-1 β) or tumour necrosis factor- α (TNF- α), and thereby mediates TAK1 activation [PMID:11460167].

Notable Publications

Author	Pubmed ID	Journal	Application
Chunjie Sheng	30348973	Nat Commun	WB
Yanghao Chen	36420902	Phytother Res	WB
Bo Yang	33985523	J Neuroinflammation	WB

Storage

Storage:

Store at -20°C. Stable for one year after shipment.

Storage Buffer:

PBS with 0.02% sodium azide and 50% glycerol pH 7.3.

Aliquoting is unnecessary for -20°C storage

*** 20ul sizes contain 0.1% BSA

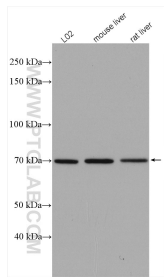
For technical support and original validation data for this product please contact:

T: 1 (888) 4PTGLAB (1-888-478-4522) (toll free in USA), or 1(312) 455-8498 (outside USA)

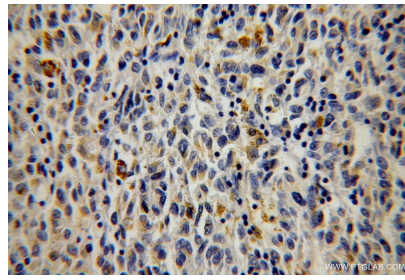
E: proteintech@ptglab.com
W: ptglab.com

This product is exclusively available under Proteintech Group brand and is not available to purchase from any other manufacturer.

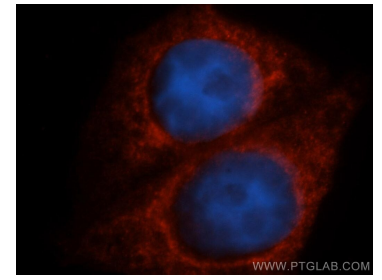
Selected Validation Data



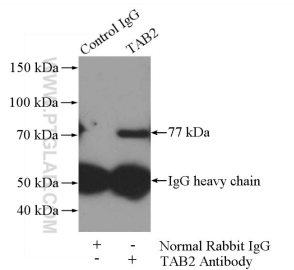
Various lysates were subjected to SDS PAGE followed by western blot with 14410-1-AP (TAB2 antibody) at dilution of 1:2000 incubated at room temperature for 1.5 hours.



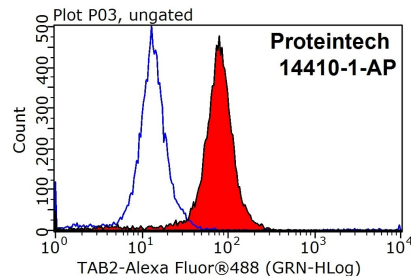
Immunohistochemical analysis of paraffin-embedded human malignant melanoma using 14410-1-AP (TAB2 antibody) at dilution of 1:100 (under 40x lens).



Immunofluorescent analysis of HepG2 cells, using MAP3K71P2 antibody 14410-1-AP at 1:50 dilution and Rhodamine-labeled goat anti-rabbit IgG (red). Blue pseudocolor = DAPI (fluorescent DNA dye).



IP Result of anti-TAB2 (IP:14410-1-AP, 4 μ g; Detection:14410-1-AP 1:600) with HepG2 cells lysate 3600 μ g.



1X10⁶ HepG2 cells were stained with 0.2 μ g TAB2 antibody (14410-1-AP, red) and control antibody (blue). Fixed with 90% MeOH blocked with 3% BSA (30 min). Alexa Fluor 488-conjugated AffiniPure Goat Anti-Rabbit IgG(H+L) with dilution 1:1000.