

For Research Use Only

# GALE Polyclonal antibody

Catalog Number: 14414-1-AP

Featured Product

4 Publications



## Basic Information

<b>Catalog Number:</b> 14414-1-AP	<b>GenBank Accession Number:</b> BC050685	<b>Purification Method:</b> Antigen affinity purification
<b>Size:</b> 150ul, Concentration: 233 µg/ml by Nanodrop and 233 µg/ml by Bradford method using BSA as the standard;	<b>GeneID (NCBI):</b> 2582	<b>Recommended Dilutions:</b> WB 1:200-1:1000 IP 0.5-4.0 ug for IP and 1:200-1:1000 for WB
<b>Source:</b> Rabbit	<b>Full Name:</b> UDP-galactose-4-epimerase	<b>IHC 1:20-1:200</b> <b>IF 1:50-1:500</b>
<b>Isotype:</b> IgG	<b>Calculated MW:</b> 38 kDa	
<b>Immunogen Catalog Number:</b> AG5756	<b>Observed MW:</b> 38 kDa	

## Applications

<b>Tested Applications:</b> IF, IHC, IP, WB, ELISA	<b>Positive Controls:</b> WB : A375 cells, HeLa cells, MCF-7 cells
<b>Cited Applications:</b> IHC, WB	<b>IP :</b> HeLa cells,
<b>Species Specificity:</b> human, mouse	<b>IHC :</b> human malignant melanoma tissue,
<b>Cited Species:</b> human, rat	<b>IF :</b> HeLa cells,

**Note-IHC: suggested antigen retrieval with TE buffer pH 9.0; (\*) Alternatively, antigen retrieval may be performed with citrate buffer pH 6.0**

## Background Information

GALE(Galactowaldenase) is also named as UDP-glucose 4-epimerase, UDP-galactose 4-epimerase, and belongs to the sugar epimerase family. UDP-galactose 4-epimerase catalyzes the interconversion of UDP-glucose and UDP-galactose during normal galactose metabolism. In humans, deficiencies in this enzyme lead to the complex disorder referred to as epimerase-deficiency galactosemia(PMID:10801319).It can exist as a homodimer(PMID:8931134).

## Notable Publications

Author	Pubmed ID	Journal	Application
Yinxian Wen	25202993	PLoS One	WB, IHC
Yinxian Wen	25201731	Biochem Biophys Res Commun	WB, IHC
Yan Wang	32903891	Infect Drug Resist	WB

## Storage

**Storage:**  
Store at -20°C. Stable for one year after shipment.  
**Storage Buffer:**  
PBS with 0.02% sodium azide and 50% glycerol pH 7.3.  
Aliquoting is unnecessary for -20°C storage

\*\*\* 20ul sizes contain 0.1% BSA

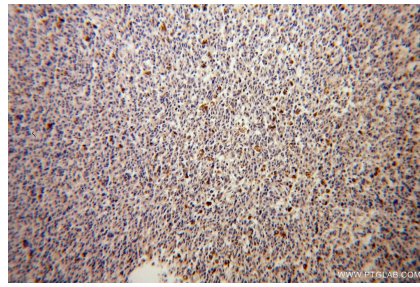
For technical support and original validation data for this product please contact:  
T: 1 (888) 4PTGLAB (1-888-478-4522) (toll free in USA), or 1(312) 455-8498 (outside USA)  
E: proteintech@ptglab.com  
W: ptglab.com

This product is exclusively available under Proteintech Group brand and is not available to purchase from any other manufacturer.

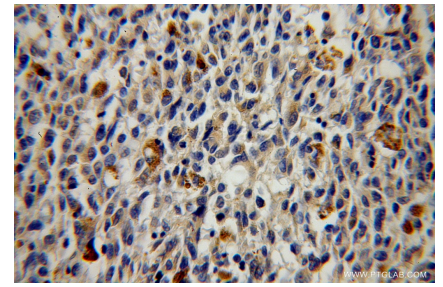
## Selected Validation Data



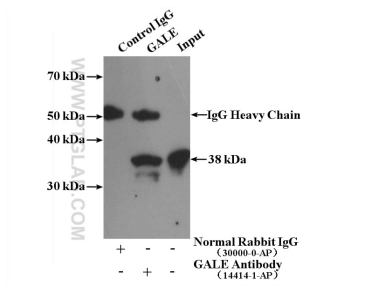
A375 cells were subjected to SDS PAGE followed by western blot with 14414-1-AP (GALE antibody) at dilution of 1:300 incubated at room temperature for 1.5 hours.



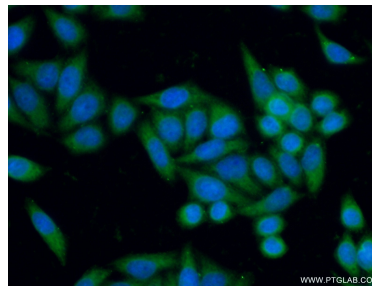
Immunohistochemical analysis of paraffin-embedded human malignant melanoma using 14414-1-AP (GALE antibody) at dilution of 1:100 (under 10x lens).



Immunohistochemical analysis of paraffin-embedded human malignant melanoma using 14414-1-AP (GALE antibody) at dilution of 1:100 (under 40x lens).



IP Result of anti-GALE (IP:14414-1-AP, 4ug; Detection:14414-1-AP 1:300) with HeLa cells lysate 1080ug.



Immunofluorescent analysis of (-20°C Ethanol) fixed HeLa cells using 14414-1-AP (GALE antibody) at dilution of 1:50 and Alexa Fluor 488-conjugated AffiniPure Goat Anti-Rabbit IgG(H+L).