

For Research Use Only

# UBE2L3 Polyclonal antibody

Catalog Number: 14415-1-AP

Featured Product

10 Publications



## Basic Information

### Catalog Number:

14415-1-AP

### Size:

150ul, Concentration: 550 ug/ml by Nanodrop and 267 ug/ml by Bradford method using BSA as the standard;

### Source:

Rabbit

### Isotype:

IgG

### Immunogen Catalog Number:

AG5758

### GenBank Accession Number:

BC053368

### GeneID (NCBI):

7332

### UNIPROT ID:

P68036

### Full Name:

ubiquitin-conjugating enzyme E2L3

### Calculated MW:

18 kDa

### Observed MW:

18 kDa

### Purification Method:

Antigen affinity purification

### Recommended Dilutions:

WB 1:1000-1:4000

IP 0.5-4.0 ug for 1.0-3.0 mg of total protein lysate

IHC 1:50-1:500

## Applications

### Tested Applications:

WB, IP, IHC, ELISA

### Cited Applications:

WB, IHC, IP

### Species Specificity:

human, mouse, rat

### Cited Species:

human, mouse, pig

**Note-IHC: suggested antigen retrieval with TE buffer pH 9.0; (\*) Alternatively, antigen retrieval may be performed with citrate buffer pH 6.0**

### Positive Controls:

**WB** : HeLa cells, A431 cells, HEK-293 cells, K-562 cells, MCF-7 cells, mouse kidney tissue, mouse testis tissue, NIH/3T3 cells, rat kidney tissue

**IP** : mouse kidney tissue,

**IHC** : human lung cancer tissue,

## Background Information

UBE2L3 (Ubiquitin-conjugating enzyme E2 L3) is also named as UBCE7, UBCH7 and belongs to the ubiquitin-conjugating enzyme family. It regulates nuclear hormone receptors transcriptional activity and may play a role in myelopoiesis. UBE2L3 is associated with susceptibility to systemic lupus erythematosus (SLE) and rheumatoid arthritis in European ancestry populations (PMID:22045845).

## Notable Publications

Author	Pubmed ID	Journal	Application
Nitchakarn Kaokhum	36182100	Mol Cell Proteomics	WB
Xudong Xie	36284303	Cell Commun Signal	WB, IHC
Xu Ye	29887867	Front Immunol	WB

## Storage

### Storage:

Store at -20°C. Stable for one year after shipment.

### Storage Buffer:

PBS with 0.02% sodium azide and 50% glycerol

Aliquoting is unnecessary for -20°C storage

\*\*\* 20ul sizes contain 0.1% BSA

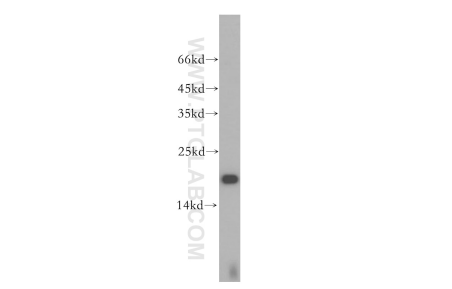
For technical support and original validation data for this product please contact:

T: 1 (888) 4PTGLAB (1-888-478-4522) (toll free in USA), or 1(312) 455-8498 (outside USA)

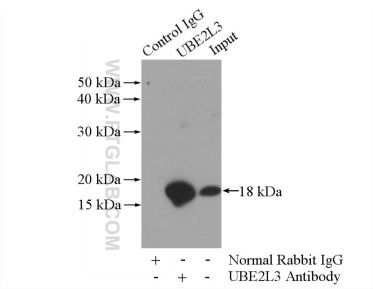
E: [proteintech@ptglab.com](mailto:proteintech@ptglab.com)  
W: [ptglab.com](http://ptglab.com)

This product is exclusively available under Proteintech Group brand and is not available to purchase from any other manufacturer.

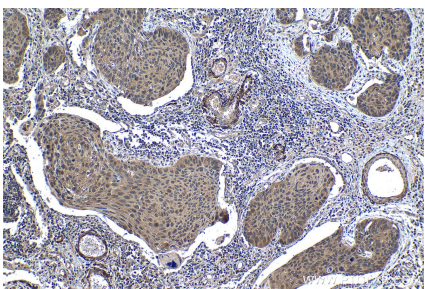
Selected Validation Data



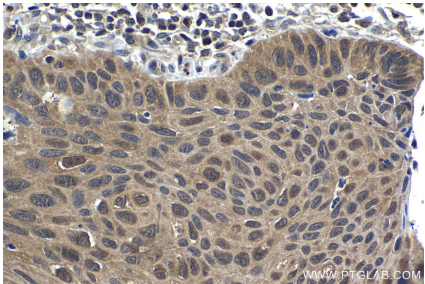
HeLa cells were subjected to SDS PAGE followed by western blot with 14415-1-AP (UBE2L3 antibody) at dilution of 1:500 incubated at room temperature for 1.5 hours.



IP result of anti-UBE2L3 (IP:14415-1-AP, 3ug; Detection:14415-1-AP 1:2000) with mouse kidney tissue lysate 4000ug.



Immunohistochemical analysis of paraffin-embedded human lung cancer tissue slide using 14415-1-AP (UBE2L3 antibody) at dilution of 1:200 (under 10x lens). Heat mediated antigen retrieval with Tris-EDTA buffer (pH 9.0).



Immunohistochemical analysis of paraffin-embedded human lung cancer tissue slide using 14415-1-AP (UBE2L3 antibody) at dilution of 1:200 (under 40x lens). Heat mediated antigen retrieval with Tris-EDTA buffer (pH 9.0).