

For Research Use Only

ORAI1 Polyclonal antibody

Catalog Number: 14443-1-AP **1 Publications**



Basic Information

Catalog Number: 14443-1-AP	GenBank Accession Number: NM_032790	Purification Method: Antigen affinity purification
Size: 150ul, Concentration: 140 µg/ml by Bradford method using BSA as the standard;	GeneID (NCBI): 84876	Recommended Dilutions: WB 1:200-1:1000 IHC 1:20-1:200
Source: Rabbit	Full Name: ORAI calcium release-activated calcium modulator 1	
Isotype: IgG	Calculated MW: 35 kDa	
	Observed MW: 44 kDa	

Applications

Tested Applications: IHC, WB, ELISA	Positive Controls:
Cited Applications: WB	WB: human spleen tissue, IHC: human colon cancer tissue,
Species Specificity: human, mouse, rat	
Cited Species: rat	

Note-IHC: suggested antigen retrieval with TE buffer pH 9.0; (*) Alternatively, antigen retrieval may be performed with citrate buffer pH 6.0

Background Information

Store-operated calcium channels (SOCs) play essential functions in various physiological processes. Orai1 (also named CRACM1) is a critical molecular component of SOCs. Orai1 protein is a 35-45 kDa plasma membrane protein with 4 transmembrane domains. Human patients with a severe combined immunodeficiency (SCID) syndrome possess point mutations in Orai1 gene. This antibody may be used to block the ion currents mediated by Orai1. ORAI1 contains 2 isoforms produced by alternative initiation (uniprot: Q96D31). Catalog#14443-1-AP only recognises alpha isoform.

Notable Publications

Author	Pubmed ID	Journal	Application
Selina M Garcia	32702049	PLoS One	WB

Storage

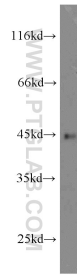
Storage:
Store at -20°C. Stable for one year after shipment.
Storage Buffer:
PBS with 0.02% sodium azide and 50% glycerol pH 7.3.
Aliquoting is unnecessary for -20°C storage

***** 20ul sizes contain 0.1% BSA**

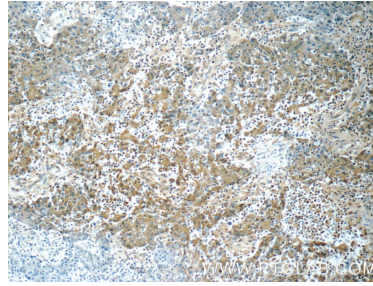
For technical support and original validation data for this product please contact:
T: 1 (888) 4PTGLAB (1-888-478-4522) (toll free in USA), or 1(312) 455-8498 (outside USA)
E: proteintech@ptglab.com
W: ptglab.com

This product is exclusively available under Proteintech Group brand and is not available to purchase from any other manufacturer.

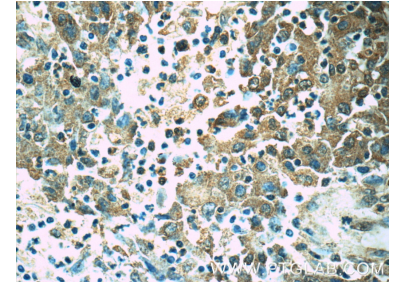
Selected Validation Data



human spleen tissue were subjected to SDS PAGE followed by western blot with 14443-1-AP (Orai1-Alpha antibody) at dilution of 1:300 incubated at room temperature for 1.5 hours.



Immunohistochemical analysis of paraffin-embedded human colon cancer tissue slide using 14443-1-AP (Orai1-Alpha antibody at dilution of 1:50 (under 10x lens).



Immunohistochemical analysis of paraffin-embedded human colon cancer tissue slide using 14443-1-AP (Orai1-Alpha antibody at dilution of 1:50 (under 40x lens).