

For Research Use Only

KLHL2 Polyclonal antibody

Catalog Number: 14449-1-AP



Basic Information

Catalog Number:

14449-1-AP

Size:

150ul , Concentration: 220 µg/ml by Bradford method using BSA as the standard;

Source:

Rabbit

Isotype:

IgG

Immunogen Catalog Number:

AG5950

GenBank Accession Number:

BC022503

GeneID (NCBI):

11275

UNIPROT ID:

O95198

Full Name:

kelch-like 2, Mayven (Drosophila)

Calculated MW:

66 kDa

Observed MW:

66 kDa

Purification Method:

Antigen affinity purification

Recommended Dilutions:

WB 1:5000-1:50000

IF 1:20-1:200

Applications

Tested Applications:

WB, IF, ELISA

Species Specificity:

human, mouse, rat

Positive Controls:

WB : K-562 cells, human brain tissue, MCF-7 cells, SH-SY5Y cells

IF : MCF-7 cells,

Storage

Storage:

Store at -20°C. Stable for one year after shipment.

Storage Buffer:

PBS with 0.02% sodium azide and 50% glycerol pH 7.3.

Aliquoting is unnecessary for -20°C storage

***** 20ul sizes contain 0.1% BSA**

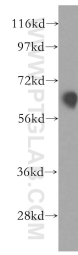
For technical support and original validation data for this product please contact:

T: 1 (888) 4PTGLAB (1-888-478-4522) (toll free in USA), or 1(312) 455-8498 (outside USA)

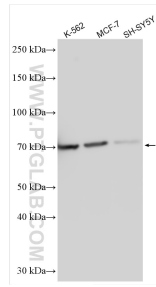
E: proteintech@ptglab.com
W: ptglab.com

This product is exclusively available under Proteintech Group brand and is not available to purchase from any other manufacturer.

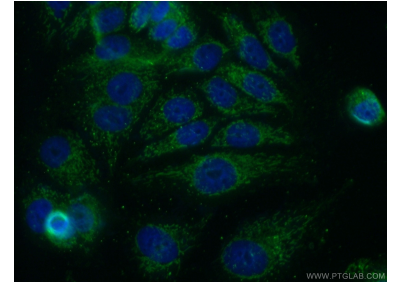
Selected Validation Data



MCF7 cells were subjected to SDS PAGE followed by western blot with 14449-1-AP (KLHL2 antibody) at dilution of 1:500 incubated at room temperature for 1.5 hours.



Various lysates were subjected to SDS PAGE followed by western blot with 14449-1-AP (KLHL2 antibody) at dilution of 1:10000 incubated at room temperature for 1.5 hours.



Immunofluorescent analysis of MCF-7 cells using 14449-1-AP (KLHL2 antibody) at dilution of 1:50 and Alexa Fluor 488-conjugated AffiniPure Goat Anti-Rabbit IgG(H+L).