

For Research Use Only

# GLUD2 Polyclonal antibody

Catalog Number: 14462-1-AP

Featured Product

3 Publications



## Basic Information

Catalog Number:

14462-1-AP

Size:

150ul, Concentration: 650 ug/ml by Nanodrop;

Source:

Rabbit

Isotype:

IgG

Immunogen Catalog Number:

AG5748

GenBank Accession Number:

BC050732

GeneID (NCBI):

2747

UNIPROT ID:

P49448

Full Name:

glutamate dehydrogenase 2

Calculated MW:

61 kDa

Observed MW:

50-60 kDa

Purification Method:

Antigen affinity purification

Recommended Dilutions:

WB: 1:5000-1:50000

IHC: 1:20-1:200

IF/ICC: 1:50-1:500

## Applications

Tested Applications:

WB, IHC, IF/ICC, ELISA

Cited Applications:

WB, IHC

Species Specificity:

human

Cited Species:

human

**Note-IHC: suggested antigen retrieval with TE buffer pH 9.0; (\*) Alternatively, antigen retrieval may be performed with citrate buffer pH 6.0**

Positive Controls:

WB : A431 cells, HepG2 cells, HeLa cells, HepG2 cells U-251 cells

IHC : human prostate cancer tissue,

IF/ICC : HepG2 cells,

## Notable Publications

Author	Pubmed ID	Journal	Application
Chunhong Cui	34283311	Amino Acids	WB
Xuyong Wei	35430532	Transl Oncol	IHC
Pei Wang	37872351	Nat Metab	WB

## Storage

Storage:

Store at -20°C. Stable for one year after shipment.

Storage Buffer:

PBS with 0.02% sodium azide and 50% glycerol, pH7.3

Aliquoting is unnecessary for -20°C storage

\*\*\* 20ul sizes contain 0.1% BSA

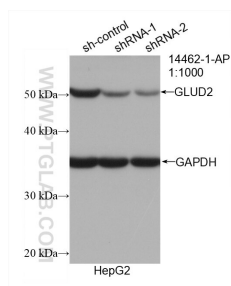
For technical support and original validation data for this product please contact:

T: 1 (888) 4PTGLAB (1-888-478-4522) (toll free in USA), or 1(312) 455-8498 (outside USA)

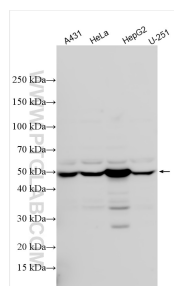
E: [proteintech@ptglab.com](mailto:proteintech@ptglab.com)  
W: [ptglab.com](http://ptglab.com)

This product is exclusively available under Proteintech Group brand and is not available to purchase from any other manufacturer.

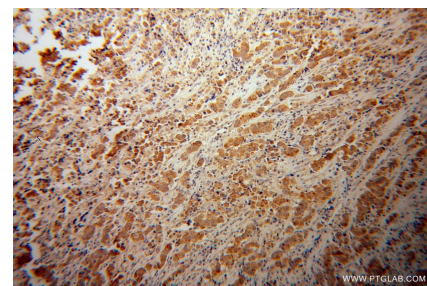
## Selected Validation Data



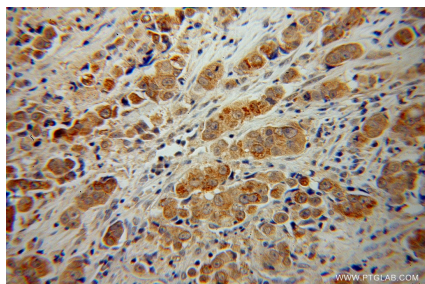
WB result of GLUD2 antibody (14462-1-AP; 1:1000; incubated at room temperature for 1.5 hours) with sh-Control and sh-GLUD2 transfected HepG2 cells.



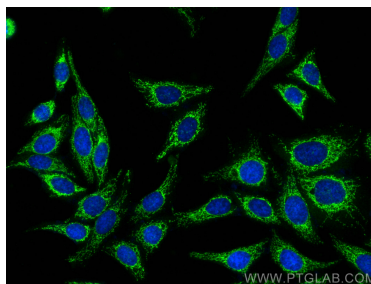
Various lysates were subjected to SDS PAGE followed by western blot with 14462-1-AP (GLUD2 antibody) at dilution of 1:20000 incubated at room temperature for 1.5 hours.



Immunohistochemical analysis of paraffin-embedded human prostate cancer using 14462-1-AP (GLUD2 antibody) at dilution of 1:100 (under 10x lens).



Immunohistochemical analysis of paraffin-embedded human prostate cancer using 14462-1-AP (GLUD2 antibody) at dilution of 1:100 (under 40x lens).



Immunofluorescent analysis of (-20°C Methanol) fixed HepG2 cells using GLUD2 antibody (14462-1-AP) at dilution of 1:200 and CoraLite® 488-Conjugated AffiniPure Goat Anti-Rabbit IgG(H+L).