

For Research Use Only

PARVB Polyclonal antibody

Catalog Number: 14463-1-AP

Featured Product

6 Publications



Basic Information

Catalog Number: 14463-1-AP	GenBank Accession Number: BC046103	Purification Method: Antigen affinity purification
Size: 150ul , Concentration: 600 µg/ml by Nanodrop;	GeneID (NCBI): 29780	Recommended Dilutions: WB 1:5000-1:50000 IF 1:200-1:800
Source: Rabbit	Full Name: parvin, beta	
Isotype: IgG	Calculated MW: 42 kDa	
Immunogen Catalog Number: AG5760	Observed MW: 42 kDa and 45 kDa	

Applications

Tested Applications: IF, WB, ELISA	Positive Controls:
Cited Applications: WB	WB: HeLa cells, mouse spleen tissue, mouse heart tissue, rat heart tissue
Species Specificity: mouse, human, rat	IF: HeLa cells,
Cited Species: human, mouse	

Background Information

Notable Publications

Author	Pubmed ID	Journal	Application
Katharina Rothe	32413332	Cell Stem Cell	WB
Nicholas Rooney	27019299	J Cell Physiol	WB
Linbin Yang	32528174	Nature	WB

Storage

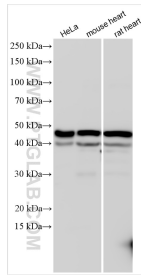
Storage:
Store at -20°C. Stable for one year after shipment.
Storage Buffer:
PBS with 0.02% sodium azide and 50% glycerol pH 7.3.
Aliquoting is unnecessary for -20°C storage

*** 20ul sizes contain 0.1% BSA

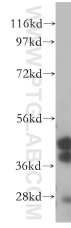
For technical support and original validation data for this product please contact:
T: 1 (888) 4PTGLAB (1-888-478-4522) (toll free in USA), or 1(312) 455-8498 (outside USA)
E: proteintech@ptglab.com
W: ptglab.com

This product is exclusively available under Proteintech Group brand and is not available to purchase from any other manufacturer.

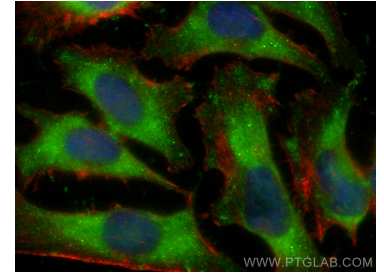
Selected Validation Data



Various lysates were subjected to SDS PAGE followed by western blot with 14463-1-AP (PARVB antibody) at dilution of 1:10000 incubated at room temperature for 1.5 hours.



mouse spleen tissue were subjected to SDS PAGE followed by western blot with 14463-1-AP (PARVB antibody) at dilution of 1:100 incubated at room temperature for 1.5 hours.



Immunofluorescent analysis of (-20°C Ethanol) fixed HeLa cells using PARVB antibody (14463-1-AP) at dilution of 1:400 and CoraLite®488-Conjugated AffiniPure Goat Anti-Rabbit IgG(H+L), CL594-Phalloidin (red).