

For Research Use Only

# SMC6 Polyclonal antibody

Catalog Number: 14465-1-AP

1 Publications



## Basic Information

### Catalog Number:

14465-1-AP

### Size:

150ul, Concentration: 1000 ug/ml by Nanodrop and 473 ug/ml by Bradford method using BSA as the standard;

### Source:

Rabbit

### Isotype:

IgG

### Immunogen Catalog Number:

AG5812

### GenBank Accession Number:

BC039828

### GeneID (NCBI):

79677

### UNIPROT ID:

Q965B8

### Full Name:

structural maintenance of chromosomes 6

### Calculated MW:

126 kDa

### Observed MW:

130 kDa

### Purification Method:

Antigen affinity purification

### Recommended Dilutions:

WB 1:2000-1:12000

IP 0.5-4.0 ug for 1.0-3.0 mg of total protein lysate

IHC 1:50-1:500

## Applications

### Tested Applications:

WB, IP, IHC, ELISA

### Cited Applications:

WB

### Species Specificity:

human, mouse, rat

### Cited Species:

human

### Positive Controls:

WB : HeLa cells, mouse testis tissue, NIH/3T3 cells, rat testis tissue

IP : HeLa cells, mouse testis tissue

IHC : mouse testis tissue,

**Note-IHC: suggested antigen retrieval with TE buffer pH 9.0; (\*) Alternatively, antigen retrieval may be performed with citrate buffer pH 6.0**

## Background Information

SMC6 (Structural maintenance of chromosomes protein 6) is core component of the SMC5-SMC6 complex that is involved in DNA double-strand breaks by homologous recombination. The complex may promote sister chromatid homologous recombination by recruiting the SMC1-SMC3 cohesin complex to double-strand breaks. The complex is required for telomere maintenance via recombination in ALT (alternative lengthening of telomeres) cell lines and mediates sumoylation of shelterin complex (telosome) components which is proposed to lead to shelterin complex disassembly in ALT-associated PML bodies (APBs) (PMID: 26983541).

## Notable Publications

Author	Pubmed ID	Journal	Application
Wei Xu	30185588	J Virol	WB

## Storage

### Storage:

Store at -20°C. Stable for one year after shipment.

### Storage Buffer:

PBS with 0.02% sodium azide and 50% glycerol pH 7.3.

Aliquoting is unnecessary for -20°C storage

\*\*\* 20ul sizes contain 0.1% BSA

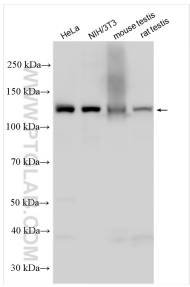
For technical support and original validation data for this product please contact:

T: 1 (888) 4PTGLAB (1-888-478-4522) (toll free in USA), or 1(312) 455-8498 (outside USA)

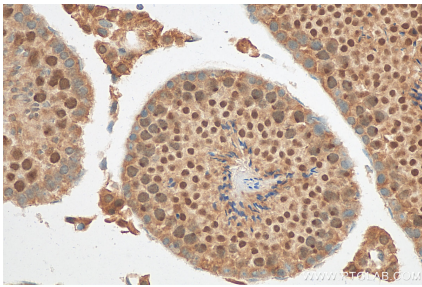
E: [proteintech@ptglab.com](mailto:proteintech@ptglab.com)  
W: [ptglab.com](http://ptglab.com)

This product is exclusively available under Proteintech Group brand and is not available to purchase from any other manufacturer.

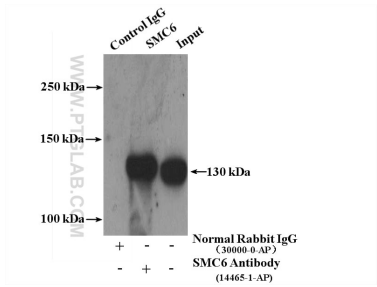
Selected Validation Data



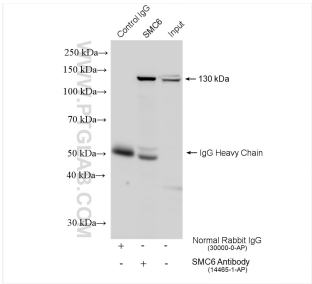
Various lysates were subjected to SDS PAGE followed by western blot with 14465-1-AP (SMC6 antibody) at dilution of 1:6000 incubated at room temperature for 1.5 hours.



Immunohistochemical analysis of paraffin-embedded mouse testis tissue slide using 14465-1-AP (SMC6 antibody) at dilution of 1:200 (under 40x lens). Heat mediated antigen retrieval with Tris-EDTA buffer (pH 9.0).



IP result of anti-SMC6 (IP:14465-1-AP, 4ug; Detection:14465-1-AP 1:1000) with mouse testis tissue lysate 4000ug.



IP result of anti-SMC6 (IP:14465-1-AP, 4ug; Detection:14465-1-AP 1:4000) with HeLa cells lysate 1320 ug.