

For Research Use Only

RPS7 Polyclonal antibody

Catalog Number: 14491-1-AP

Featured Product

7 Publications



Basic Information

Catalog Number:

14491-1-AP

Size:

150ul, Concentration: 293 ug/ml by Bradford method using BSA as the standard;

Source:

Rabbit

Isotype:

IgG

Immunogen Catalog Number:

AG5892

GenBank Accession Number:

BC061901

GeneID (NCBI):

6201

UNIPROT ID:

P62081

Full Name:

ribosomal protein S7

Calculated MW:

22 kDa

Observed MW:

22-25 kDa

Purification Method:

Antigen affinity purification

Recommended Dilutions:

WB: 1:500-1:1000

IHC: 1:20-1:200

Applications

Tested Applications:

WB, IHC, ELISA

Cited Applications:

WB, IHC, IF

Species Specificity:

human, mouse, rat

Cited Species:

human, mouse

Positive Controls:

WB: NIH/3T3 cells, HepG2 cells

IHC: human placenta tissue,

Note-IHC: suggested antigen retrieval with TE buffer pH 9.0; (*) Alternatively, antigen retrieval may be performed with citrate buffer pH 6.0

Background Information

Ribosomal protein S7(RPS7) belongs to the RPs, which is structural component of the ribosome involved in protein synthesis. It interacts with and inhibits mdm2 mediated p53 degradation function. Also RPS7 has an essential role in early development. RPS7 involves in the maturation of ribosomal RNAs in the large or the small ribosomal subunit production pathway

Notable Publications

Author	Pubmed ID	Journal	Application
Hao Zhang	36277893	Biomed Res Int	WB, IHC, IF
Vijaya Pandey	26442981	Sci Rep	WB
Lei Wu	33935284	Cell Death Dis	WB

Storage

Storage:

Store at -20°C. Stable for one year after shipment.

Storage Buffer:

PBS with 0.02% sodium azide and 50% glycerol, pH7.3

Aliquoting is unnecessary for -20°C storage

*** 20ul sizes contain 0.1% BSA

For technical support and original validation data for this product please contact:

T: 1 (888) 4PTGLAB (1-888-478-4522) (toll free in USA), or 1(312) 455-8498 (outside USA)

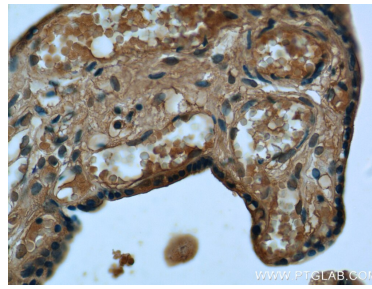
E: proteintech@ptglab.com
W: ptglab.com

This product is exclusively available under Proteintech Group brand and is not available to purchase from any other manufacturer.

Selected Validation Data



NIH/3T3 cells were subjected to SDS PAGE followed by western blot with 14491-1-AP (RPS7 antibody) at dilution of 1:600 incubated at room temperature for 1.5 hours.



Immunohistochemical analysis of paraffin-embedded human placenta tissue slide using 14491-1-AP (RPS7 Antibody) at dilution of 1:50 (under 40x Lens).