

For Research Use Only

CREB3L2 Polyclonal antibody

Catalog Number: 14514-1-AP

6 Publications



Basic Information

Catalog Number:

14514-1-AP

Size:

150ul, Concentration: 600 ug/ml by Nanodrop and 300 ug/ml by Bradford method using BSA as the standard;

Source:

Rabbit

Isotype:

IgG

Immunogen Catalog Number:

AG5973

GenBank Accession Number:

BC063666

GeneID (NCBI):

64764

UNIPROT ID:

Q70SY1

Full Name:

cAMP responsive element binding protein 3-like 2

Calculated MW:

57 kDa

Observed MW:

60-70 kDa

Purification Method:

Antigen affinity purification

Recommended Dilutions:

WB 1:500-1:2000

IF/ICC 1:50-1:500

Applications

Tested Applications:

WB, IF/ICC, ELISA

Cited Applications:

WB, IF

Species Specificity:

human, mouse, rat

Cited Species:

human

Positive Controls:

WB: Jurkat cells, mouse liver tissue, K-562 cells, SH-SY5Y cells, Neuro-2a cells

IF/ICC: HepG2 cells,

Background Information

Cyclic AMP-responsive element-binding protein 3-like protein 2 (CREB3L2), also named BBF2H7, is a transcriptional activator which is activated during endoplasmic reticulum (ER) stress late phase. It has 3 isoforms produced by alternative splicing. CREB3L2 exerts protective effect in neurons by regulation of unfolded protein response (UPR)-dependent gene transcriptions. N-terminal cytoplasmic domain of CREB3L2 is cleaved under ER stress and then translocates to the nucleus. Catalog# 14514-1-AP is a rabbit polyclonal antibody raised against N-terminal (1-247aa) of human CREB3L2.

Notable Publications

Author	Pubmed ID	Journal	Application
Ryoichi Murase	36152228	Mol Biol Rep	WB
Yongli Zhang	34664264	Br J Pharmacol	WB
Kentaro Oh-Hashi	33803345	Int J Mol Sci	WB

Storage

Storage:

Store at -20°C. Stable for one year after shipment.

Storage Buffer:

PBS with 0.02% sodium azide and 50% glycerol pH 7.3.

Aliquoting is unnecessary for -20°C storage

*** 20ul sizes contain 0.1% BSA

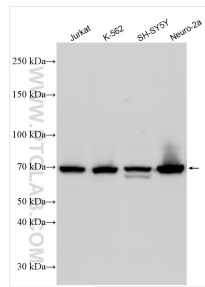
For technical support and original validation data for this product please contact:

T: 1 (888) 4PTGLAB (1-888-478-4522) (toll free in USA), or 1(312) 455-8498 (outside USA)

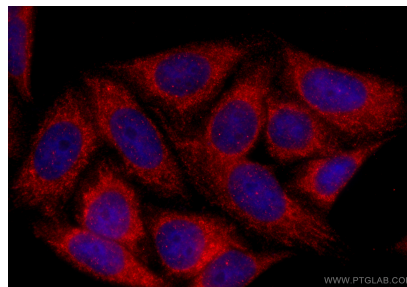
E: proteintech@ptglab.com
W: ptglab.com

This product is exclusively available under Proteintech Group brand and is not available to purchase from any other manufacturer.

Selected Validation Data



Various lysates were subjected to SDS PAGE followed by western blot with 14514-1-AP (CREB3L2 antibody) at dilution of 1:1000 incubated at room temperature for 1.5 hours.



Immunofluorescent analysis of (-20°C Ethanol) fixed HepG2 cells using CREB3L2 antibody (14514-1-AP) at dilution of 1:200 and CoraLite® 594-Conjugated Goat Anti-Rabbit IgG(H+L) (SA00013-4).