

For Research Use Only

ENSA Polyclonal antibody

Catalog Number: 14518-1-AP



Basic Information

Catalog Number: 14518-1-AP	GenBank Accession Number: BC004461	Purification Method: Antigen affinity purification
Size: 150ul , Concentration: 1000 µg/ml by Nanodrop and 673 µg/ml by Bradford method using BSA as the standard;	GeneID (NCBI): 2029	Recommended Dilutions: WB 1:200-1:1000 IHC 1:20-1:200 IF 1:50-1:500
Source: Rabbit	Full Name: endosulfine alpha	
Isotype: IgG	Calculated MW: 14 kDa	
Immunogen Catalog Number: AG5982	Observed MW: 19 kDa	

Applications

Tested Applications: IF, IHC, WB, ELISA	Positive Controls:
Species Specificity: human, mouse, rat	WB : mouse brain tissue, HeLa cells
Note-IHC: suggested antigen retrieval with TE buffer pH 9.0; (*) Alternatively, antigen retrieval may be performed with citrate buffer pH 6.0	IHC : human small intestine tissue,
	IF : HeLa cells,

Background Information

Storage

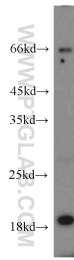
Storage:
Store at -20°C. Stable for one year after shipment.
Storage Buffer:
PBS with 0.02% sodium azide and 50% glycerol pH 7.3.
Aliquoting is unnecessary for -20°C storage

*** 20ul sizes contain 0.1% BSA

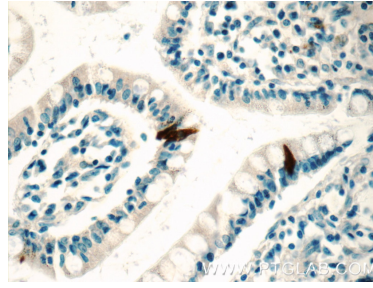
For technical support and original validation data for this product please contact:
T: 1 (888) 4PTGLAB (1-888-478-4522) (toll free in USA), or 1(312) 455-8498 (outside USA) E: proteintech@ptglab.com
W: ptglab.com

This product is exclusively available under Proteintech Group brand and is not available to purchase from any other manufacturer.

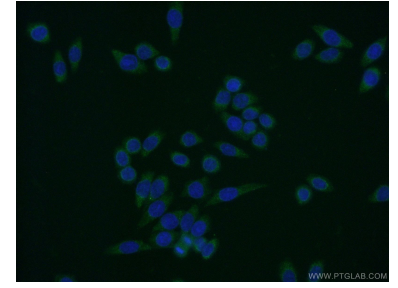
Selected Validation Data



mouse brain tissue were subjected to SDS PAGE followed by western blot with 14518-1-AP (ENSA antibody) at dilution of 1:300 incubated at room temperature for 1.5 hours.



Immunohistochemical analysis of paraffin-embedded human small intestine tissue slide using 14518-1-AP (ENSA Antibody) at dilution of 1:50 (under 40x lens).



Immunofluorescent analysis of (-20°C Ethanol) fixed HeLa cells using 14518-1-AP (ENSA antibody) at dilution of 1:50 and Alexa Fluor 488-conjugated AffiniPure Goat Anti-Rabbit IgG(H+L).