

For Research Use Only

MLL5 Polyclonal antibody

Catalog Number: 14540-1-AP

1 Publications



Basic Information

Catalog Number:

14540-1-AP

Size:

150ul , Concentration: 450 ug/ml by Nanodrop and 273 ug/ml by Bradford method using BSA as the standard;

Source:

Rabbit

Isotype:

IgG

Immunogen Catalog Number:

AG6044

GenBank Accession Number:

BC062583

GeneID (NCBI):

55904

UNIPROT ID:

Q8IZD2

Full Name:

myeloid/lymphoid or mixed-lineage leukemia 5 (trithorax homolog, Drosophila)

Calculated MW:

205 kDa

Observed MW:

100 kDa, 70 kDa

Purification Method:

Antigen affinity purification

Recommended Dilutions:

WB 1:500-1:3000

IHC 1:500-1:2000

IF/ICC 1:50-1:500

Applications

Tested Applications:

WB, IHC, IF/ICC, ELISA

Cited Applications:

IF

Species Specificity:

human, mouse

Cited Species:

human

Note-IHC: suggested antigen retrieval with TE buffer pH 9.0; (*) Alternatively, antigen retrieval may be performed with citrate buffer pH 6.0

Positive Controls:

WB : K-562 cells, HL-60 cells, Raji cells, mouse retina tissue

IHC : human pancreas cancer tissue,

IF/ICC : K-562 cells,

Notable Publications

Author	Pubmed ID	Journal	Application
Hailian Zhao	38128540	Mol Cell	IF

Storage

Storage:

Store at -20°C. Stable for one year after shipment.

Storage Buffer:

PBS with 0.02% sodium azide and 50% glycerol pH 7.3.

Aliquoting is unnecessary for -20°C storage

*** 20ul sizes contain 0.1% BSA

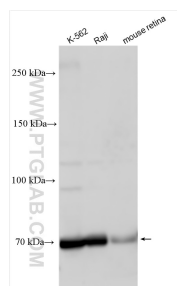
For technical support and original validation data for this product please contact:

T: 1 (888) 4PTGLAB (1-888-478-4522) (toll free in USA), or 1(312) 455-8498 (outside USA)

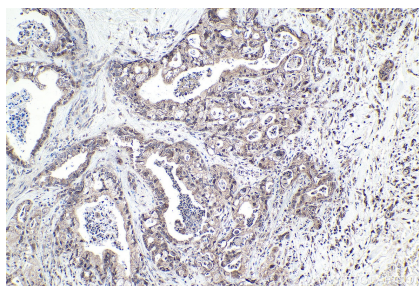
E: proteintech@ptglab.com
W: ptglab.com

This product is exclusively available under Proteintech Group brand and is not available to purchase from any other manufacturer.

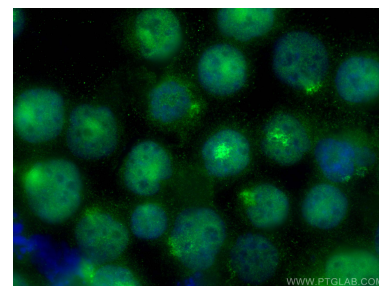
Selected Validation Data



Various lysates were subjected to SDS PAGE followed by western blot with 14540-1-AP (MLL5 antibody) at dilution of 1:1500 incubated at room temperature for 1.5 hours.



Immunohistochemical analysis of paraffin-embedded human pancreas cancer tissue slide using 14540-1-AP (MLL5 antibody) at dilution of 1:1000 (under 10x lens). Heat mediated antigen retrieval with Tris-EDTA buffer (pH 9.0).



Immunofluorescent analysis of (4% PFA) fixed K-562 cells using MLL5 antibody (14540-1-AP) at dilution of 1:200 and CoraLite®488-Conjugated AffiniPure Goat Anti-Rabbit IgG(H+L) (SA00013-2).