

For Research Use Only

Alpha Tubulin Polyclonal antibody

Catalog Number: 14555-1-AP

27 Publications



Basic Information

Catalog Number:

14555-1-AP

Size:

150ul, Concentration: 500 ug/ml by Nanodrop and 307 ug/ml by Bradford method using BSA as the standard;

Source:

Rabbit

Isotype:

IgG

Immunogen Catalog Number:

AG6038

GenBank Accession Number:

BC050637

GeneID (NCBI):

7846

UNIPROT ID:

Q71U36

Full Name:

tubulin, alpha 1a

Calculated MW:

50 kDa

Observed MW:

50-55 kDa

Purification Method:

Antigen affinity purification

Recommended Dilutions:

WB: 1:5000-1:50000

IHC: 1:250-1:1000

IF/ICC: 1:50-1:500

Applications

Tested Applications:

WB, IHC, IF/ICC, ELISA

Cited Applications:

WB, IHC, IF

Species Specificity:

human, mouse, rat

Cited Species:

human, mouse, rat, canine, bovine, sheep

Note-IHC: suggested antigen retrieval with TE buffer pH 9.0; (*) Alternatively, antigen retrieval may be performed with citrate buffer pH 6.0

Positive Controls:

WB: HEK-293 cells, mouse cerebellum tissue, HeLa cells, HepG2 cells, NIH/3T3 cells, mouse brain tissue, rat kidney tissue

IHC: mouse testis tissue,

IF/ICC: HeLa cells,

Notable Publications

Author	Pubmed ID	Journal	Application
Mohamed Bourmoum	29724911	J Cell Sci	WB
Shaqayeq Roqanian	35170061	J Neurosci Res	WB
Cecilia D Gerstner	36611941	Cells	IHC

Storage

Storage:

Store at -20°C. Stable for one year after shipment.

Storage Buffer:

PBS with 0.02% sodium azide and 50% glycerol, pH7.3

Aliquoting is unnecessary for -20°C storage

*** 20ul sizes contain 0.1% BSA

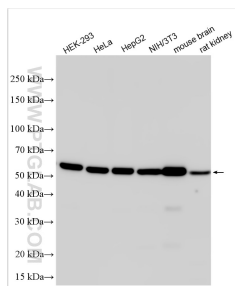
For technical support and original validation data for this product please contact:

T: 1 (888) 4PTGLAB (1-888-478-4522) (toll free in USA), or 1(312) 455-8498 (outside USA)

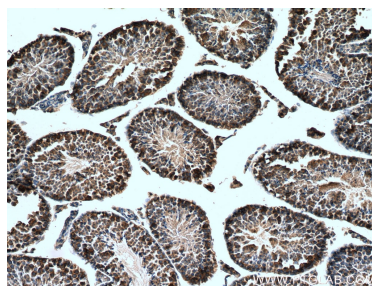
E: proteintech@ptglab.com
W: ptglab.com

This product is exclusively available under Proteintech Group brand and is not available to purchase from any other manufacturer.

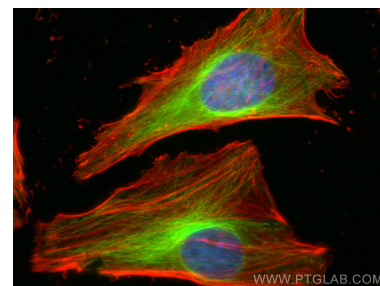
Selected Validation Data



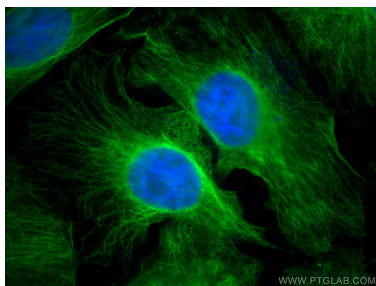
HEK-293 cells were subjected to SDS PAGE followed by western blot with 14555-1-AP (Alpha Tubulin antibody) at dilution of 1:40000 incubated at room temperature for 1.5 hours.



Immunohistochemical analysis of paraffin-embedded mouse testis tissue slide using 14555-1-AP (Alpha Tubulin antibody) at dilution of 1:500 (under 10x lens). Heat mediated antigen retrieval with Tris-EDTA buffer (pH 9.0).



Immunofluorescent analysis of (4% PFA) fixed HeLa cells using Alpha Tubulin antibody (14555-1-AP) at dilution of 1:200 and CoraLite®488-Conjugated AffiniPure Goat Anti-Rabbit IgG(H+L), CL594-phalloidin (red).



Immunofluorescent analysis of (4% PFA) fixed HeLa cells using Alpha Tubulin antibody (14555-1-AP) at dilution of 1:400 and Multi-rAb CoraLite® Plus 488-Goat Anti-Rabbit Recombinant Secondary Antibody (H+L) (RGAR002).