

For Research Use Only

Pikachurin Polyclonal antibody

Catalog Number: 14578-1-AP **1 Publications**



Basic Information

Catalog Number: 14578-1-AP	GenBank Accession Number: BC033177	Purification Method: Antigen affinity purification
Size: 150ul , Concentration: 500 µg/ml by Nanodrop and 253 µg/ml by Bradford method using BSA as the standard;	GeneID (NCBI): 133584	Recommended Dilutions: WB 1:500-1:2000 IF 1:20-1:200
Source: Rabbit	Full Name: EGF-like, fibronectin type III and laminin G domains	
Isotype: IgG	Calculated MW: 111 kDa	
Immunogen Catalog Number: AG5986	Observed MW: 60 kDa	

Applications

Tested Applications: IF, WB, ELISA	Positive Controls: WB : human placenta tissue, PC-3 cells, SH-SY5Y cells
Cited Applications: IF	IF : SH-SY5Y cells,
Species Specificity: human, mouse, rat	
Cited Species: mouse	

Background Information

Pikachurin, also known as EGFLAM or FLJ39155, is an extracellular matrix-like retinal protein that has been found to localize in the synaptic cleft of the photoreceptor ribbon synapse (PMID: 18641643). Pikachurin is a dystroglycan-interacting protein and has an essential role in photoreceptor ribbon synapse formation. Pikachurin is a 1017-amino-acid protein with a calculated molecular weight of 111 kDa and high mRNA abundance in retina. This antibody detects a 60-kDa band, which has been reported and likely represents a fragment resulting from cleavage of Pikachurin (PMID: 23226524).

Notable Publications

Author	Pubmed ID	Journal	Application
Chen Liang	32178579	Stem Cells Dev	IF

Storage

Storage:
Store at -20°C. Stable for one year after shipment.
Storage Buffer:
PBS with 0.02% sodium azide and 50% glycerol pH 7.3.
Aliquoting is unnecessary for -20°C storage

*** 20ul sizes contain 0.1% BSA

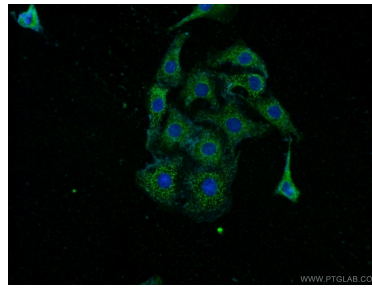
For technical support and original validation data for this product please contact:
T: 1 (888) 4PTGLAB (1-888-478-4522) (toll free in USA), or 1(312) 455-8498 (outside USA)
E: proteintech@ptglab.com
W: ptglab.com

This product is exclusively available under Proteintech Group brand and is not available to purchase from any other manufacturer.

Selected Validation Data



human placenta tissue were subjected to SDS PAGE followed by western blot with 14578-1-AP (Pikachurin antibody) at dilution of 1:400 incubated at room temperature for 1.5 hours.



Immunofluorescent analysis of SH-SY5Y cells using 14578-1-AP (Pikachurin antibody) at dilution of 1:50 and Alexa Fluor 488-conjugated AffiniPure Goat Anti-Rabbit IgG(H+L).