

For Research Use Only

# LC3 Polyclonal antibody

Catalog Number: 14600-1-AP

Featured Product

1459 Publications



## Basic Information

### Catalog Number:

14600-1-AP

### Size:

150ul, Concentration: 550 ug/ml by Nanodrop;

### Source:

Rabbit

### Isotype:

IgG

### Immunogen Catalog Number:

AG6144

### GenBank Accession Number:

BC067797

### GeneID (NCBI):

81631

### ENSEMBL Gene ID:

ENSG00000140941

### UNIPROT ID:

Q9GZQ8

### Full Name:

microtubule-associated protein 1  
light chain 3 beta

### Calculated MW:

15 kDa

### Observed MW:

14-18 kDa

### Purification Method:

Antigen affinity purification

### Recommended Dilutions:

WB 1:2000-1:8000

IHC 1:50-1:500

IF/ICC 1:250-1:1000

## Applications

### Tested Applications:

WB, IHC, IF/ICC, FC (Intra), ELISA

### Cited Applications:

WB, IHC, IF, IP, CoIP, ELISA

### Species Specificity:

human, mouse, rat

### Cited Species:

human, mouse, rat, pig, rabbit, monkey, chicken,  
zebrafish, sheep, goat

**Note-IHC: suggested antigen retrieval with  
TE buffer pH 9.0; (\*) Alternatively, antigen  
retrieval may be performed with citrate  
buffer pH 6.0**

### Positive Controls:

**WB**: HeLa cells, mouse brain tissue, Chloroquine  
treated HeLa cells, rat brain tissue

**IHC**: human liver tissue, human gliomas tissue, mouse  
brain tissue

**IF/ICC**: Chloroquine treated HeLa cells, Chloroquine  
treated HepG2 cells

## Background Information

Map1LC3, also known as LC3, is the human homolog of yeast Atg8 and is involved in the formation of autophagosomal vacuoles, called autophagosomes. Three human Map1LC3 isoforms, MAP1LC3A, MAP1LC3B, and MAP1LC3C, undergo post-translational modifications during autophagy. And they differ in their post-translation modifications during autophagy. Map1LC3 also exists in two modified forms, an 18 kDa cytoplasmic form that was originally identified as a subunit of the microtubule-associated protein 1, and a 14-16 kDa form that is associated with the autophagosome membrane. This antibody can cross react with MAP1LC3A, MAP1LC3B, and MAP1LC3C.

## Notable Publications

Author	Pubmed ID	Journal	Application
Huanshan He	36183753	Int J Biol Macromol	WB
Xin Xu	36178722	Environ Toxicol	WB,IF
Zeen Zhu	36248959	Front Oncol	WB,IF,IHC

## Storage

### Storage:

Store at -20°C. Stable for one year after shipment.

### Storage Buffer:

PBS with 0.02% sodium azide and 50% glycerol, pH7.3

Aliquoting is unnecessary for -20°C storage

\*\*\* 20ul sizes contain 0.1% BSA

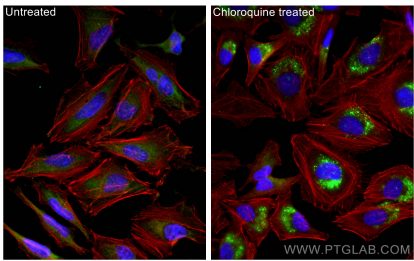
For technical support and original validation data for this product please contact:

T: 1 (888) 4PTGLAB (1-888-478-4522) (toll free  
in USA), or 1(312) 455-8498 (outside USA)

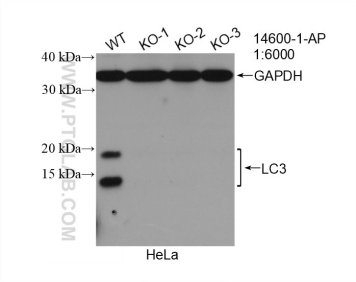
E: [proteintech@ptglab.com](mailto:proteintech@ptglab.com)  
W: [ptglab.com](http://ptglab.com)

**This product is exclusively available under Proteintech  
Group brand and is not available to purchase from any  
other manufacturer.**

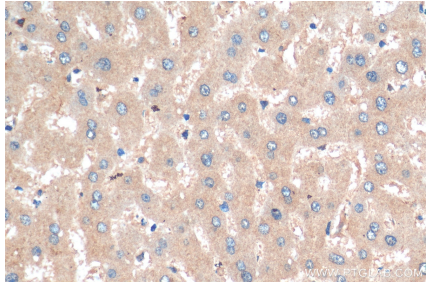
Selected Validation Data



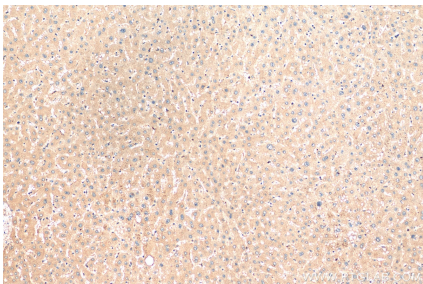
Immunofluorescent analysis of (-20°C Ethanol) fixed Chloroquine treated HeLa cells using LC3 antibody (14600-1-AP) at dilution of 1:500 and CoraLite®488-Conjugated AffiniPure Goat Anti-Rabbit IgG(H+L).



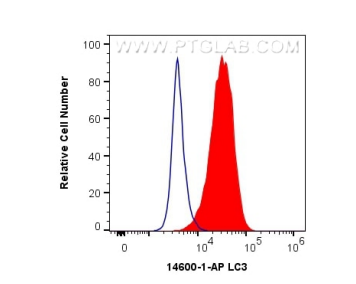
WB result of LC3 antibody (14600-1-AP; 1:6000; room temperature for 1.5 hours) with negative Control and LC3 knockout HeLa cells.



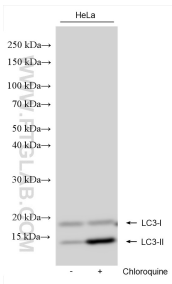
Immunohistochemical analysis of paraffin-embedded human liver tissue slide using 14600-1-AP (LC3 antibody) at dilution of 1:200 (under 10x lens). Heat mediated antigen retrieval with Tris-EDTA buffer (pH 9.0).



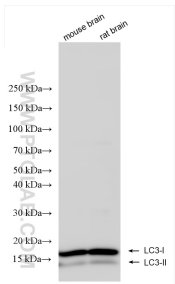
Immunohistochemical analysis of paraffin-embedded human liver tissue slide using 14600-1-AP (LC3 antibody) at dilution of 1:200 (under 40x lens). Heat mediated antigen retrieval with Tris-EDTA buffer (pH 9.0).



1X10<sup>6</sup> HeLa cells were intracellularly stained with 0.5 ug Anti-Human LC3 (14600-1-AP) and CoraLite®488-Conjugated AffiniPure Goat Anti-Rabbit IgG(H+L) at dilution 1:1000 (red), or 0.5 ug Rabbit IgG control Rabbit PolyAb (30000-O-AP, Clone: ) (blue). Cells were fixed with 4% PFA and permeabilized with Flow Cytometry Perm Buffer (PF00011-C).



Non-treated and Chloroquine treated HeLa cells were subjected to SDS PAGE followed by western blot with 14600-1-AP (LC3 antibody) at dilution of 1:8000 incubated at room temperature for 1.5 hours.



Various lysates were subjected to SDS PAGE followed by western blot with 14600-1-AP (LC3 antibody) at dilution of 1:6000 incubated at room temperature for 1.5 hours.