

For Research Use Only

# SMPD1,ASM Polyclonal antibody

Catalog Number:14609-1-AP

Featured Product

17 Publications



## Basic Information

### Catalog Number:

14609-1-AP

### Size:

150ul , Concentration: 500 ug/ml by Nanodrop;

### Source:

Rabbit

### Isotype:

IgG

### Immunogen Catalog Number:

AG6180

### GenBank Accession Number:

BC041164

### GeneID (NCBI):

6609

### UNIPROT ID:

P17405

### Full Name:

sphingomyelin phosphodiesterase 1, acid lysosomal

### Calculated MW:

70 kDa

### Observed MW:

60 kDa, 70-75 kDa

### Purification Method:

Antigen affinity purification

### Recommended Dilutions:

WB 1:500-1:1000

IHC 1:100-1:400

## Applications

### Tested Applications:

WB, IHC, ELISA

### Cited Applications:

WB, IHC, IF

### Species Specificity:

human, mouse

### Cited Species:

human, mouse, rat

**Note-IHC: suggested antigen retrieval with TE buffer pH 9.0; (\*) Alternatively, antigen retrieval may be performed with citrate buffer pH 6.0**

### Positive Controls:

WB : mouse brain tissue, mouse cerebellum tissue

IHC : human brain tissue, human tonsillitis tissue

## Background Information

SMPD1(Sphingomyelin phosphodiesterase) is also named as ASM and belongs to the acid sphingomyelinase family. It is an important enzyme in sphingolipid metabolism and plays key roles in apoptosis, immunity, development, and cancer. The deficient activity of this enzyme results in Types A and B Niemann-Pick disease (NPD). This protein has 4 isoforms produced by alternative splicing. SMPD1 can produce a 60 kDa peptide with its signal peptide missing.

## Notable Publications

Author	Pubmed ID	Journal	Application
Jonghae Lee	36077841	Cancers (Basel)	WB
Xin Tracy Liu	36333295	Oncogenesis	WB
Yi-Yu Qi	35391788	Drug Des Devel Ther	IF

## Storage

### Storage:

Store at -20°C. Stable for one year after shipment.

### Storage Buffer:

PBS with 0.02% sodium azide and 50% glycerol pH 7.3.

Aliquoting is unnecessary for -20°C storage

\*\*\* 20ul sizes contain 0.1% BSA

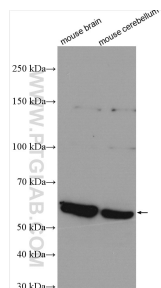
For technical support and original validation data for this product please contact:

T: 1 (888) 4PTGLAB (1-888-478-4522) (toll free in USA), or 1(312) 455-8498 (outside USA)

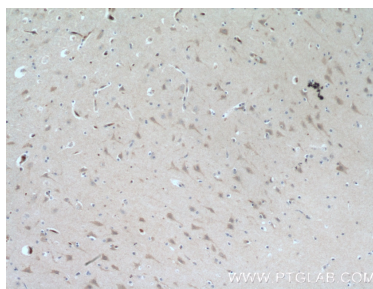
E: proteintech@ptglab.com  
W: ptglab.com

This product is exclusively available under Proteintech Group brand and is not available to purchase from any other manufacturer.

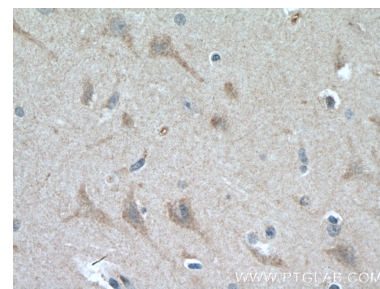
## Selected Validation Data



Various lysates were subjected to SDS PAGE followed by western blot with 14609-1-AP (SMPD1,ASM antibody) at dilution of 1:600 incubated at room temperature for 1.5 hours.



Immunohistochemical analysis of paraffin-embedded human brain tissue slide using 14609-1-AP (SMPD1,ASM Antibody) at dilution of 1:200 (under 10x lens). Heat mediated antigen retrieval with Tris-EDTA buffer (pH 9.0).



Immunohistochemical analysis of paraffin-embedded human brain tissue slide using 14609-1-AP (SMPD1,ASM Antibody) at dilution of 1:200 (under 40x lens). Heat mediated antigen retrieval with Tris-EDTA buffer (pH 9.0).