

For Research Use Only

RMI1 Polyclonal antibody

Catalog Number: 14630-1-AP

Featured Product

8 Publications



Basic Information

Catalog Number: 14630-1-AP	GenBank Accession Number: BC064937	Purification Method: Antigen affinity purification
Size: 150ul , Concentration: 500 µg/ml by Nanodrop;	GeneID (NCBI): 80010	Recommended Dilutions: WB 1:2000-1:12000 IP 0.5-4.0 ug for IP and 1:500-1:3000 for WB
Source: Rabbit	Full Name: RMI1, RecQ mediated genome instability 1, homolog (S. cerevisiae)	
Isotype: IgG	Calculated MW: 70 kDa	
Immunogen Catalog Number: AG6208	Observed MW: 75 kDa	

Applications

Tested Applications: IP, WB, ELISA	Positive Controls: WB : HeLa cells, HepG2 cells, Jurkat cells IP : HeLa cells,
Cited Applications: IF, WB	
Species Specificity: human	
Cited Species: human	

Background Information

RMI1 is an essential component of the RMI complex, a complex that plays an important role in the processing of homologous recombination intermediates to limit DNA crossover formation in cells. RMI1 promotes TOP3A binding to double Holliday junctions (DHJ) and hence stimulates TOP3A-mediated dissolution. RMI1 is required for BLM phosphorylation during mitosis. Within the BLM complex, RMI1 is required for BLM and TOP3A stability. (PMID: 16537486, PMID: 16595695, PMID: 15775963)

Notable Publications

Author	Pubmed ID	Journal	Application
Chang Xu	29042194	Biochem Biophys Res Commun	WB
Yuxiao Sun	33202158	DNA Cell Biol	WB
Chang Xu	26556339	Int J Mol Sci	WB

Storage

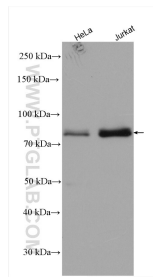
Storage:
Store at -20°C. Stable for one year after shipment.
Storage Buffer:
PBS with 0.02% sodium azide and 50% glycerol pH 7.3.
Aliquoting is unnecessary for -20°C storage

*** 20ul sizes contain 0.1% BSA

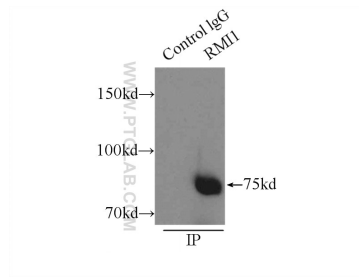
For technical support and original validation data for this product please contact:
T: 1 (888) 4PTGLAB (1-888-478-4522) (toll free in USA), or 1(312) 455-8498 (outside USA)
E: proteintech@ptglab.com
W: ptglab.com

This product is exclusively available under Proteintech Group brand and is not available to purchase from any other manufacturer.

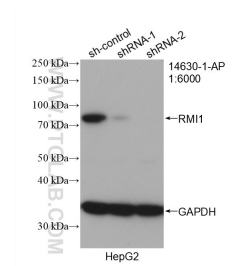
Selected Validation Data



HeLa cells were subjected to SDS PAGE followed by western blot with 14630-1-AP (RMI 1 antibody) at dilution of 1:6000 incubated at room temperature for 1.5 hours.



IP Result of anti-RMI 1 (IP:14630-1-AP, 3ug; Detection:14630-1-AP 1:1500) with HeLa cells lysate 3800ug.



WB result of RMI 1 antibody (14630-1-AP; 1:6000; incubated at room temperature for 1.5 hours) with sh-Control and sh-RMI 1 transfected HepG2 cells.