

For Research Use Only

CNPY2/MSAP Polyclonal antibody

Catalog Number: 14635-1-AP

Featured Product

16 Publications



Basic Information

Catalog Number:

14635-1-AP

Size:

150ul, Concentration: 300 ug/ml by Nanodrop and 153 ug/ml by Bradford method using BSA as the standard;

Source:

Rabbit

Isotype:

IgG

Immunogen Catalog Number:

AG6214

GenBank Accession Number:

BC065015

GeneID (NCBI):

10330

UNIPROT ID:

Q9Y2B0

Full Name:

canopy 2 homolog (zebrafish)

Calculated MW:

21 kDa

Observed MW:

17-21 kDa

Purification Method:

Antigen affinity purification

Recommended Dilutions:

WB 1:1000-1:8000

IP 0.5-4.0 ug for 1.0-3.0 mg of total protein lysate

IHC 1:200-1:800

IF/ICC 1:20-1:200

Applications

Tested Applications:

WB, IHC, IF/ICC, FC (Intra), IP, ELISA

Cited Applications:

WB, IHC, IF

Species Specificity:

human, mouse, rat

Cited Species:

human, mouse, rat

Note-IHC: suggested antigen retrieval with TE buffer pH 9.0; (*) Alternatively, antigen retrieval may be performed with citrate buffer pH 6.0

Positive Controls:

WB : HepG2 cells, mouse pancreas tissue, human liver tissue, mouse liver tissue, rat liver tissue

IP : HepG2 cells,

IHC : human liver tissue, human pancreas cancer tissue

IF/ICC : HepG2 cells,

Background Information

CNPY2, also named as MSAP, TMEM4 and ZS1G9, is a positive regulator of neurite outgrowth. It interacts with the ezrin-radixin-moesin (ERM)-like myosin regulatory light chain-interacting protein (MIR), and the two proteins are co-localized in cell lines and in primary neurons. CNPY2 can stabilize MRLC and thus bring about an increase in neurite outgrowth. (PMID: 12826659) This antibody is specific to CNPY2.

Notable Publications

Author	Pubmed ID	Journal	Application
Feng Hong	28869608	Nat Struct Mol Biol	WB
Lina Zhao	31625681	J Cell Mol Med	WB
Chun-Ling Guo	36422742	Apoptosis	WB,IF

Storage

Storage:

Store at -20°C. Stable for one year after shipment.

Storage Buffer:

PBS with 0.02% sodium azide and 50% glycerol, pH7.3

Aliquoting is unnecessary for -20°C storage

*** 20ul sizes contain 0.1% BSA

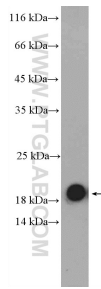
For technical support and original validation data for this product please contact:

T: 1 (888) 4PTGLAB (1-888-478-4522) (toll free in USA), or 1(312) 455-8498 (outside USA)

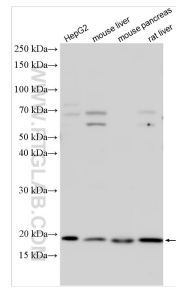
E: proteintech@ptglab.com
W: ptglab.com

This product is exclusively available under Proteintech Group brand and is not available to purchase from any other manufacturer.

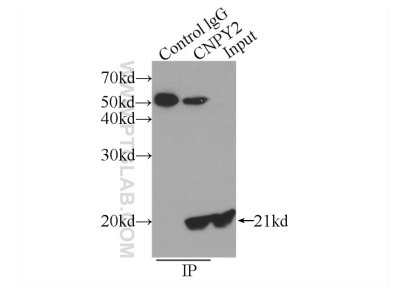
Selected Validation Data



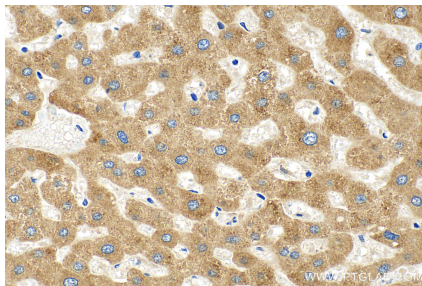
mouse pancreas tissue were subjected to SDS PAGE followed by western blot with 14635-1-AP (CNPY2, MSAP antibody) at dilution of 1:300 incubated at room temperature for 1.5 hours.



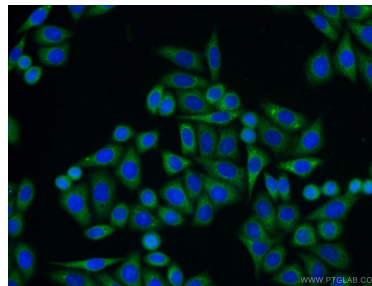
Various lysates were subjected to SDS PAGE followed by western blot with 14635-1-AP (CNPY2, MSAP antibody) at dilution of 1:4000 incubated at room temperature for 1.5 hours.



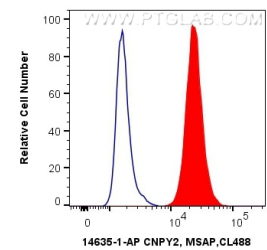
IP result of anti-CNPY2, MSAP (IP:14635-1-AP, 3ug; Detection:14635-1-AP 1:500) with HepG2 cells lysate 600ug.



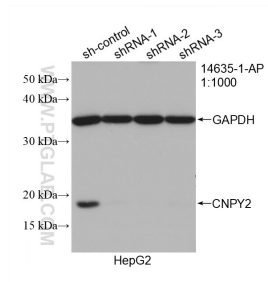
Immunohistochemical analysis of paraffin-embedded human liver tissue slide using 14635-1-AP (CNPY2, MSAP antibody) at dilution of 1:400 (under 40x lens). Heat mediated antigen retrieval with Sodium Citrate buffer (pH 6.0).



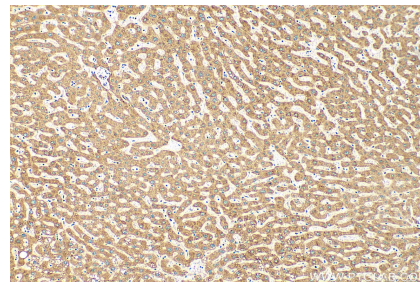
Immunofluorescent analysis of HepG2 cells using 14635-1-AP (CNPY2, MSAP antibody) at dilution of 1:50 and Alexa Fluor 488-conjugated AffiniPure Goat Anti-Rabbit IgG(H+L).



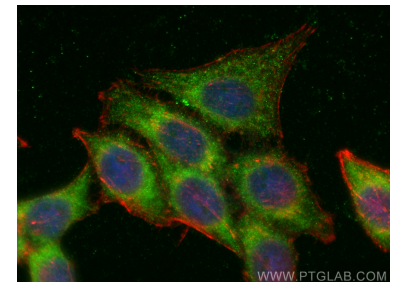
1X10⁶ HepG2 cells were intracellularly stained with 0.4 ug Anti-Human CNPY2, MSAP (14635-1-AP) and CoraLite®488-Conjugated AffiniPure Goat Anti-Rabbit IgG(H+L) at dilution 1:1000 (red), or 0.4 ug Control Antibody. Cells were fixed with 4% PFA and permeabilized with Flow Cytometry Perm Buffer (PF00011-C).



WB result of CNPY2, MSAP antibody (14635-1-AP; 1:1000; incubated at room temperature for 1.5 hours) with sh-Control and sh-CNPY2, MSAP transfected HepG2 cells.



Immunohistochemical analysis of paraffin-embedded human liver tissue slide using 14635-1-AP (CNPY2, MSAP antibody) at dilution of 1:400 (under 10x lens). Heat mediated antigen retrieval with Sodium Citrate buffer (pH 6.0).



Immunofluorescent analysis of (-20°C Ethanol) fixed HepG2 cells using CNPY2, MSAP antibody (14635-1-AP) at dilution of 1:200 and CoraLite®488-Conjugated AffiniPure Goat Anti-Rabbit IgG(H+L), CL594-Phalloidin (red).