

For Research Use Only

CHMP1B Polyclonal antibody

Catalog Number: 14639-1-AP

11 Publications



Basic Information

Catalog Number:

14639-1-AP

Size:

150ul, Concentration: 600 ug/ml by Nanodrop;

Source:

Rabbit

Isotype:

IgG

Immunogen Catalog Number:

AG6222

GenBank Accession Number:

BC065933

GeneID (NCBI):

57132

UNIPROT ID:

Q7LBR1

Full Name:

chromatin modifying protein 1B

Calculated MW:

22 kDa

Observed MW:

28 kDa

Purification Method:

Antigen affinity purification

Recommended Dilutions:

WB 1:2000-1:12000

IP 0.5-4.0 ug for 1.0-3.0 mg of total protein lysate

IHC 1:50-1:500

Applications

Tested Applications:

WB, IHC, IP, ELISA

Cited Applications:

WB, IF

Species Specificity:

human, mouse, rat

Cited Species:

human, mouse

Note-IHC: suggested antigen retrieval with TE buffer pH 9.0; (*) Alternatively, antigen retrieval may be performed with citrate buffer pH 6.0

Positive Controls:

WB : A431 cells, human heart tissue, mouse heart tissue, rat heart tissue, HeLa cells

IP : HeLa cells,

IHC : human kidney tissue,

Notable Publications

Author	Pubmed ID	Journal	Application
Ekansh Mittal	30482832	MBio	IF
Joanne Watson	36329028	Nat Commun	WB
Anil G Cashikar	24878737	Elife (Cambridge)	IF

Storage

Storage:

Store at -20°C. Stable for one year after shipment.

Storage Buffer:

PBS with 0.02% sodium azide and 50% glycerol pH 7.3.

Aliquoting is unnecessary for -20°C storage

*** 20ul sizes contain 0.1% BSA

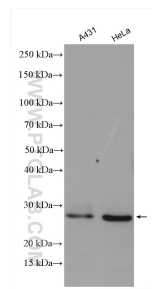
For technical support and original validation data for this product please contact:

T: 1 (888) 4PTGLAB (1-888-478-4522) (toll free in USA), or 1(312) 455-8498 (outside USA)

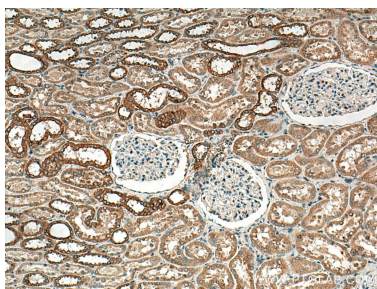
E: proteintech@ptglab.com
W: ptglab.com

This product is exclusively available under Proteintech Group brand and is not available to purchase from any other manufacturer.

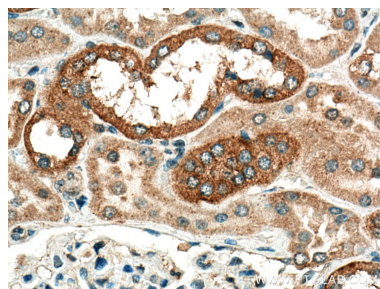
Selected Validation Data



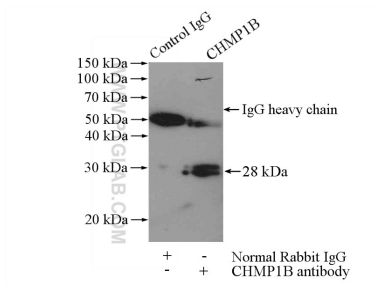
Various lysates were subjected to SDS PAGE followed by western blot with 14639-1-AP (CHMP1B antibody) at dilution of 1:6000 incubated at room temperature for 1.5 hours.



Immunohistochemical analysis of paraffin-embedded human kidney tissue slide using 14639-1-AP (CHMP1B antibody) at dilution of 1:200 (under 10x lens). Heat mediated antigen retrieval with Tris-EDTA buffer (pH 9.0).



Immunohistochemical analysis of paraffin-embedded human kidney tissue slide using 14639-1-AP (CHMP1B antibody) at dilution of 1:200 (under 40x lens). Heat mediated antigen retrieval with Tris-EDTA buffer (pH 9.0).



IP result of anti-CHMP1B (IP:14639-1-AP, 4ug; Detection:14639-1-AP 1:300) with HeLa cells lysate 880ug.