

For Research Use Only

Beta Adducin Polyclonal antibody

Catalog Number: 14640-1-AP

3 Publications



Basic Information

Catalog Number:

14640-1-AP

Size:

150ul, Concentration: 170 ug/ml by Nanodrop and 133 ug/ml by Bradford method using BSA as the standard;

Source:

Rabbit

Isotype:

IgG

Immunogen Catalog Number:

AG6223

GenBank Accession Number:

BC065525

GeneID (NCBI):

119

UNIPROT ID:

P35612

Full Name:

adducin 2 (beta)

Calculated MW:

81 kDa

Observed MW:

110 kDa

Purification Method:

Antigen affinity purification

Recommended Dilutions:

WB 1:500-1:1000

IP 0.5-4.0 ug for 1.0-3.0 mg of total protein lysate

IHC 1:50-1:500

Applications

Tested Applications:

WB, IHC, IP, ELISA

Cited Applications:

WB, IF

Species Specificity:

human, mouse, rat

Cited Species:

human, mouse

Note-IHC: suggested antigen retrieval with TE buffer pH 9.0; (*) Alternatively, antigen retrieval may be performed with citrate buffer pH 6.0

Positive Controls:

WB : mouse brain tissue, rat brain tissue

IP : K-562 cells,

IHC : human stomach tissue,

Notable Publications

Author	Pubmed ID	Journal	Application
Hong Ouyang	35857527	Sci Adv	IF
Hongchun Li	39046876	Cell Rep	WB
Zhi Lin	39024454	Science	WB

Storage

Storage:

Store at -20°C. Stable for one year after shipment.

Storage Buffer:

PBS with 0.02% sodium azide and 50% glycerol pH 7.3.

Aliquoting is unnecessary for -20°C storage

*** 20ul sizes contain 0.1% BSA

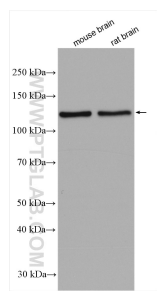
For technical support and original validation data for this product please contact:

T: 1 (888) 4PTGLAB (1-888-478-4522) (toll free in USA), or 1(312) 455-8498 (outside USA)

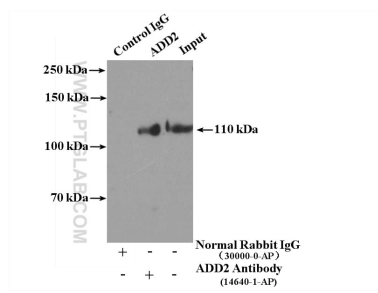
E: proteintech@ptglab.com
W: ptglab.com

This product is exclusively available under Proteintech Group brand and is not available to purchase from any other manufacturer.

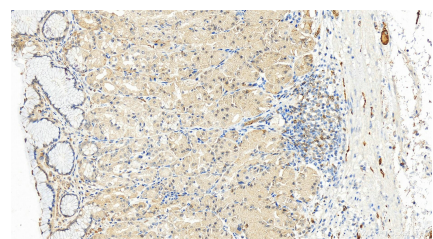
Selected Validation Data



Various lysates were subjected to SDS PAGE followed by western blot with 14640-1-AP (Beta adducin antibody) at dilution of 1:600 incubated at room temperature for 1.5 hours.



IP result of anti-Beta Adducin (IP:14640-1-AP, 4ug; Detection:14640-1-AP 1:1000) with K-562 cells lysate 3200ug.



Immunohistochemical analysis of paraffin-embedded human stomach tissue slide using 14640-1-AP (Beta Adducin antibody) at dilution of 1:200 (under 20x lens). Heat mediated antigen retrieval with Tris-EDTA buffer (pH 9.0).