

For Research Use Only

PHLDA2 Polyclonal antibody

Catalog Number: 14661-1-AP

Featured Product

7 Publications



Basic Information

Catalog Number:

14661-1-AP

Size:

150ul, Concentration: 700 ug/ml by Nanodrop and 387 ug/ml by Bradford method using BSA as the standard;

Source:

Rabbit

Isotype:

IgG

Immunogen Catalog Number:

AG6331

GenBank Accession Number:

BC005034

GeneID (NCBI):

7262

UNIPROT ID:

Q53GA4

Full Name:

pleckstrin homology-like domain, family A, member 2

Calculated MW:

17 kDa

Observed MW:

20-25 kDa

Purification Method:

Antigen affinity purification

Recommended Dilutions:

WB 1:500-1:1000

IHC 1:50-1:500

Applications

Tested Applications:

WB, IHC, ELISA

Cited Applications:

WB, IHC

Species Specificity:

human

Cited Species:

human, goat

Note-IHC: suggested antigen retrieval with TE buffer pH 9.0; (*) Alternatively, antigen retrieval may be performed with citrate buffer pH 6.0

Positive Controls:

WB : L02 cells, human placenta tissue, MCF-7 cells, PC-3 cells

IHC : human prostate cancer tissue,

Notable Publications

Author	Pubmed ID	Journal	Application
Zhan Ma	32385195	Aging (Albany NY)	WB
Yuji Kubota	35831322	Nat Commun	WB, IHC
Ruihong Wang	32112983	Gene	WB

Storage

Storage:

Store at -20°C. Stable for one year after shipment.

Storage Buffer:

PBS with 0.02% sodium azide and 50% glycerol, pH7.3

Aliquoting is unnecessary for -20°C storage

*** 20ul sizes contain 0.1% BSA

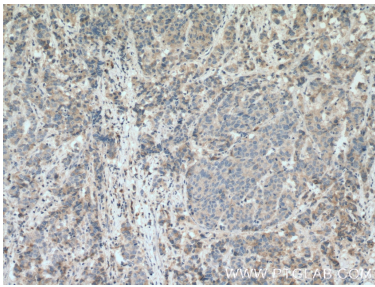
For technical support and original validation data for this product please contact:

T: 1 (888) 4PTGLAB (1-888-478-4522) (toll free in USA), or 1(312) 455-8498 (outside USA)

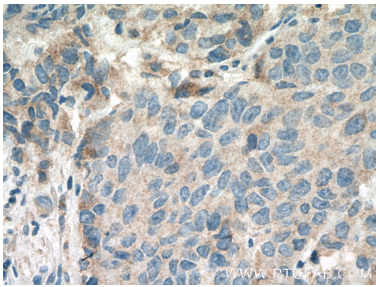
E: proteintech@ptglab.com
W: ptglab.com

This product is exclusively available under Proteintech Group brand and is not available to purchase from any other manufacturer.

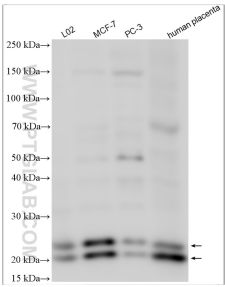
Selected Validation Data



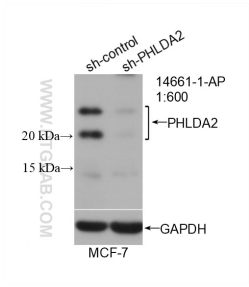
Immunohistochemical analysis of paraffin-embedded human prostate cancer tissue slide using 14661-1-AP (PHLDA2 antibody) at dilution of 1:200 (under 10x lens. Heat mediated antigen retrieval with Tris-EDTA buffer (pH 9.0).



Immunohistochemical analysis of paraffin-embedded human prostate cancer tissue slide using 14661-1-AP (PHLDA2 antibody) at dilution of 1:200 (under 40x lens. Heat mediated antigen retrieval with Tris-EDTA buffer (pH 9.0).



Various lysates were subjected to SDS PAGE followed by western blot with 14661-1-AP (PHLDA2 antibody) at dilution of 1:800 incubated at room temperature for 1.5 hours.



WB result of PHLDA2 antibody (14661-1-AP; 1:600; incubated at room temperature for 1.5 hours) with sh-Control and sh-PHLDA2 transfected MCF-7 cells.