

For Research Use Only

ELK4 Polyclonal antibody

Catalog Number: 14666-1-AP **2 Publications**



Basic Information

Catalog Number: 14666-1-AP	GenBank Accession Number: BC063676	Purification Method: Antigen affinity purification
Size: 150ul , Concentration: 300 µg/ml by Nanodrop and 287 µg/ml by Bradford method using BSA as the standard;	GeneID (NCBI): 2005	Recommended Dilutions: WB 1:500-1:2000
Source: Rabbit	Full Name: ELK4, ETS-domain protein (SRF accessory protein 1)	
Isotype: IgG	Calculated MW: 47 kDa	
Immunogen Catalog Number: AG6273	Observed MW: 47 kDa	

Applications

Tested Applications: WB,ELISA	Positive Controls: WB : HeLa cells, Jurkat cells, MCF-7 cells, mouse liver tissue
Cited Applications: WB	
Species Specificity: human, mouse, rat	
Cited Species: human, mouse	

Background Information

ELK4, also named as SAP1, SAP-1 and SAP1, belongs to the ETS family. It forms a ternary complex with the serum response factor (SRF). ELK4 requires DNA-bound SRF for ternary complex formation and makes extensive DNA contacts to the 5' side of SRF, but does not bind DNA autonomously. It is androgen regulated, involved in promoting cell growth, and highly expressed in a subset of prostate cancer. (PMID:19293179)

Notable Publications

Author	Pubmed ID	Journal	Application
Xiaoyan Zhang	36556251	J Pers Med	WB
Weiguo Xu	34497772	Front Oncol	WB

Storage

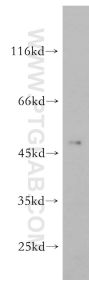
Storage:
Store at -20°C. Stable for one year after shipment.
Storage Buffer:
PBS with 0.02% sodium azide and 50% glycerol pH 7.3.
Aliquoting is unnecessary for -20°C storage

*** 20ul sizes contain 0.1% BSA

For technical support and original validation data for this product please contact:
T: 1 (888) 4PTGLAB (1-888-478-4522) (toll free in USA), or 1(312) 455-8498 (outside USA)
E: proteintech@ptglab.com
W: ptglab.com

This product is exclusively available under Proteintech Group brand and is not available to purchase from any other manufacturer.

Selected Validation Data



HeLa cells were subjected to SDS PAGE followed by western blot with 14666-1-AP (ELK4 antibody) at dilution of 1:800 incubated at room temperature for 1.5 hours.