

For Research Use Only

CRMP2 Polyclonal antibody

Catalog Number: 14686-1-AP

3 Publications



Basic Information

Catalog Number: 14686-1-AP	GenBank Accession Number: BC056408	Purification Method: Antigen affinity purification
Size: 150ul, Concentration: 1000 ug/ml by Nanodrop and 640 ug/ml by Bradford method using BSA as the standard;	GeneID (NCBI): 1808	Recommended Dilutions: WB 1:500-1:2000 IHC 1:50-1:500 IF/ICC 1:200-1:800
Source: Rabbit	UNIPROT ID: Q16555	
Isotype: IgG	Full Name: dihydropyrimidinase-like 2	
Immunogen Catalog Number: AG5985	Calculated MW: 62 kDa	
	Observed MW: 62-66 kDa	

Applications

Tested Applications: WB, IHC, IF/ICC, ELISA	Positive Controls:
Cited Applications: WB, IF	WB: PC-12 cells, mouse brain tissue, rat brain tissue, SH-SY5Y cells
Species Specificity: human, mouse, rat	IHC: mouse brain tissue,
Cited Species: human, mouse	IF/ICC: HepG2 cells, SH-SY5Y cells

Note-IHC: suggested antigen retrieval with **TE buffer pH 9.0**; (*) Alternatively, antigen retrieval may be performed with **citrate buffer pH 6.0**

Background Information

Dihydropyrimidinase-like 2 (Dpysl2), a protein involved in neuronal differentiation and axonal guidance is found altered in various nervous system diseases (PMID:19524114). It is also named as CRMP2, ULIP2 and belongs to hydantoinase/dihydropyrimidinase subfamily. The phosphorylation of the particular portion carboxyl-terminal to the basic region of DPYSL2 may play an important role in regulating its activity, and may be involved in the formation of degenerating neurites in AD brain (PMID:10757975).

Notable Publications

Author	Pubmed ID	Journal	Application
Bingteng Xie	35648393	Cancer Res	IF
Yue Pan	38986818	Biochim Biophys Acta Mol Basis Dis	WB
Anna Laddach	37737269	Nat Commun	IF

Storage

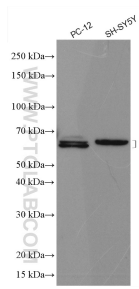
Storage:
Store at -20°C. Stable for one year after shipment.
Storage Buffer:
PBS with 0.02% sodium azide and 50% glycerol pH 7.3.
Aliquoting is unnecessary for -20°C storage

*** 20ul sizes contain 0.1% BSA

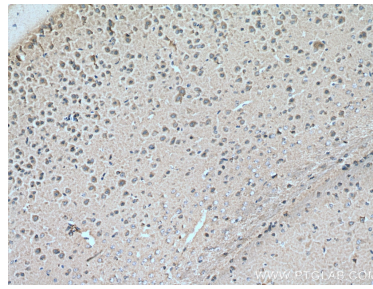
For technical support and original validation data for this product please contact:
T: 1 (888) 4PTGLAB (1-888-478-4522) (toll free in USA), or 1(312) 455-8498 (outside USA)
E: proteintech@ptglab.com
W: ptglab.com

This product is exclusively available under Proteintech Group brand and is not available to purchase from any other manufacturer.

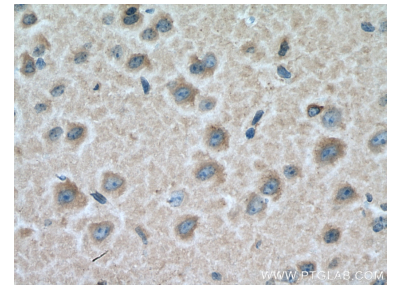
Selected Validation Data



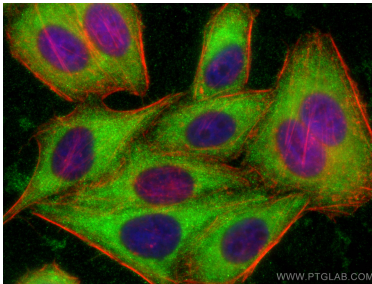
Various lysates were subjected to SDS PAGE followed by western blot with 14686-1-AP (CRMP2 antibody) at dilution of 1:1000 incubated at room temperature for 1.5 hours.



Immunohistochemical analysis of paraffin-embedded mouse brain tissue slide using 14686-1-AP (CRMP2 antibody) at dilution of 1:200 (under 10x lens). Heat mediated antigen retrieval with Tris-EDTA buffer (pH 9.0).



Immunohistochemical analysis of paraffin-embedded mouse brain tissue slide using 14686-1-AP (CRMP2 antibody) at dilution of 1:200 (under 40x lens). Heat mediated antigen retrieval with Tris-EDTA buffer (pH 9.0).



Immunofluorescent analysis of (-20°C Ethanol) fixed HepG2 cells using CRMP2 antibody (14686-1-AP) at dilution of 1:400 and CoraLite®488-Conjugated Goat Anti-Rabbit IgG(H+L) (SA00013-2), CL594-phalloidin (red).