

For Research Use Only

RPL19 Polyclonal antibody

Catalog Number: 14701-1-AP

7 Publications



Basic Information

Catalog Number:

14701-1-AP

Size:

150ul , Concentration: 450 ug/ml by Nanodrop;

Source:

Rabbit

Isotype:

IgG

Immunogen Catalog Number:

AG6371

GenBank Accession Number:

BC066315

GeneID (NCBI):

6143

UNIPROT ID:

P84098

Full Name:

ribosomal protein L19

Calculated MW:

23 kDa

Observed MW:

28 kDa

Purification Method:

Antigen affinity purification

Recommended Dilutions:

WB 1:500-1:3000

IP 0.5-4.0 ug for 1.0-3.0 mg of total protein lysate

IHC 1:20-1:200

IF/ICC 1:50-1:500

Applications

Tested Applications:

WB, IHC, IF/ICC, FC (Intra), IP, ELISA

Cited Applications:

WB

Species Specificity:

human, mouse, rat

Cited Species:

human, mouse

Note-IHC: suggested antigen retrieval with TE buffer pH 9.0; (*) Alternatively, antigen retrieval may be performed with citrate buffer pH 6.0

Positive Controls:

WB : HeLa cells, MCF-7 cells, mouse spleen tissue, mouse testis tissue, PC-3 cells

IP : HeLa cells,

IHC : human brain tissue, mouse brain tissue

IF/ICC : HeLa cells,

Background Information

RPL19, also named as 60S ribosomal protein L19, is a 196 amino acid protein, which belongs to the ribosomal protein L19e family. RPL19 encodes a ribosomal protein that is a component of the 60S subunit.

Notable Publications

Author	Pubmed ID	Journal	Application
Chandreyee Datta	36306353	Sci Adv	WB
Harrison Tudor Evans	31118249	EMBO J	
Harrison Tudor Evans	31268600	EMBO J	WB

Storage

Storage:

Store at -20°C. Stable for one year after shipment.

Storage Buffer:

PBS with 0.02% sodium azide and 50% glycerol, pH7.3

Aliquoting is unnecessary for -20°C storage

*** 20ul sizes contain 0.1% BSA

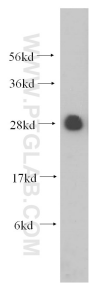
For technical support and original validation data for this product please contact:

T: 1 (888) 4PTGLAB (1-888-478-4522) (toll free in USA), or 1(312) 455-8498 (outside USA)

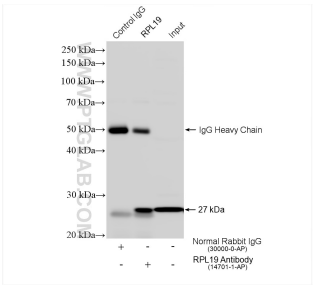
E: proteintech@ptglab.com
W: ptglab.com

This product is exclusively available under Proteintech Group brand and is not available to purchase from any other manufacturer.

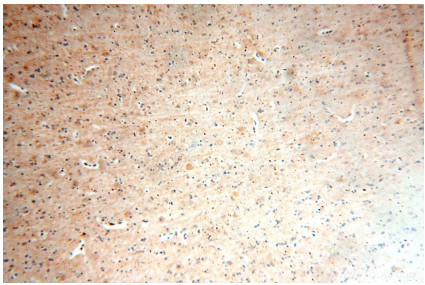
Selected Validation Data



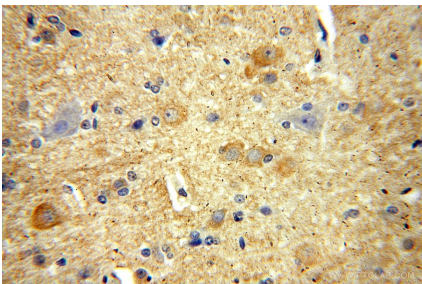
HeLa cells were subjected to SDS PAGE followed by western blot with 14701-1-AP (RPL19 antibody) at dilution of 1:500 incubated at room temperature for 1.5 hours.



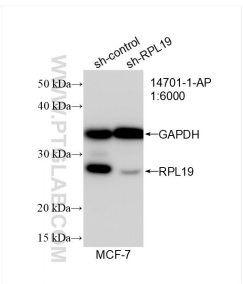
IP result of anti-RPL19 (IP:14701-1-AP, 4ug; Detection:14701-1-AP 1:3000) with HeLa cells lysate 1560 ug.



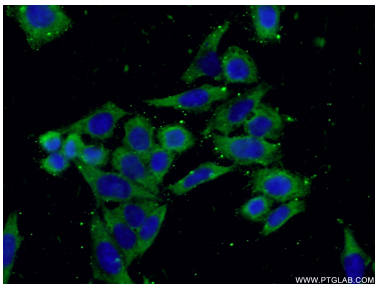
Immunohistochemical analysis of paraffin-embedded human brain using 14701-1-AP (RPL19 antibody) at dilution of 1:100 (under 10x lens).



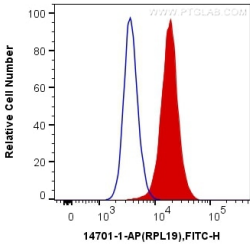
Immunohistochemical analysis of paraffin-embedded human brain using 14701-1-AP (RPL19 antibody) at dilution of 1:100 (under 40x lens).



WB result of RPL19 antibody (14701-1-AP; 1:6000; incubated at room temperature for 1.5 hours) with sh-Control and sh-RPL19 transfected MCF-7 cells.



Immunofluorescent analysis of (-20°C Ethanol) fixed HeLa cells using 14701-1-AP (RPL19 antibody) at dilution of 1:50 and Alexa Fluor 488-conjugated AffiniPure Goat Anti-Rabbit IgG(H+L).



1X10⁶ HeLa cells were intracellularly stained with 0.2 ug Anti-Human RPL19 (14701-1-AP) and CoraLite®488-Conjugated AffiniPure Goat Anti-Rabbit IgG(H+L) at dilution 1:1000 (red), or 0.2 ug Control Antibody. Cells were fixed with 4% PFA and permeabilized with Flow Cytometry Perm Buffer (PF00011-C).