

For Research Use Only

# SEC6 Polyclonal antibody

Catalog Number:14703-1-AP

Featured Product

5 Publications



## Basic Information

### Catalog Number:

14703-1-AP

### Size:

150ul , Concentration: 400 ug/ml by Nanodrop and 133 ug/ml by Bradford method using BSA as the standard;

### Source:

Rabbit

### Isotype:

IgG

### Immunogen Catalog Number:

AG6383

### GenBank Accession Number:

BC064569

### GeneID (NCBI):

11336

### UNIPROT ID:

O60645

### Full Name:

exocyst complex component 3

### Calculated MW:

87 kDa

### Observed MW:

86 kDa

### Purification Method:

Antigen affinity purification

### Recommended Dilutions:

WB 1:1000-1:6000

IHC 1:50-1:500

IF/ICC 1:20-1:200

## Applications

### Tested Applications:

WB, IHC, IF/ICC, ELISA

### Cited Applications:

WB, IHC, IF

### Species Specificity:

human, mouse, rat

### Cited Species:

human, rat

**Note-IHC: suggested antigen retrieval with TE buffer pH 9.0; (\*) Alternatively, antigen retrieval may be performed with citrate buffer pH 6.0**

### Positive Controls:

WB : HeLa cells, COLO 320 cells, HepG2 cells, human brain tissue

IHC : human gliomas tissue,

IF/ICC : HepG2 cells,

## Background Information

Exoc3 (Sec6) is a component of the exocyst (Sec6/8) complex involved in vesicle trafficking at neural synapses and vesicle targeting in polarized epithelial cells. Though best characterized in yeast, the component proteins and functions of exocyst complex have been demonstrated to be highly conserved in higher eukaryotes. This complex is composed of eight proteins (Sec3, Sec5, Sec6, Sec8, Sec10, and Sec15, Exo70 and Exo84), with molecular weights ranging from 70 to 144 kDa.

## Notable Publications

Author	Pubmed ID	Journal	Application
Hiroki Takeuchi	26617273	Cell Microbiol	WB
Liang Ming	38642509	Pathol Res Pract	WB,IHC,IF
Hongxian Zhu	38600106	Nat Commun	WB

## Storage

### Storage:

Store at -20°C. Stable for one year after shipment.

### Storage Buffer:

PBS with 0.02% sodium azide and 50% glycerol, pH7.3

Aliquoting is unnecessary for -20°C storage

\*\*\* 20ul sizes contain 0.1% BSA

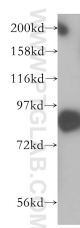
For technical support and original validation data for this product please contact:

T: 1 (888) 4PTGLAB (1-888-478-4522) (toll free in USA), or 1(312) 455-8498 (outside USA)

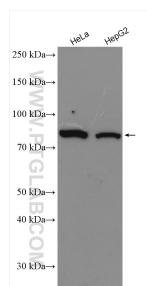
E: [proteintech@ptglab.com](mailto:proteintech@ptglab.com)  
W: [ptglab.com](http://ptglab.com)

This product is exclusively available under Proteintech Group brand and is not available to purchase from any other manufacturer.

## Selected Validation Data



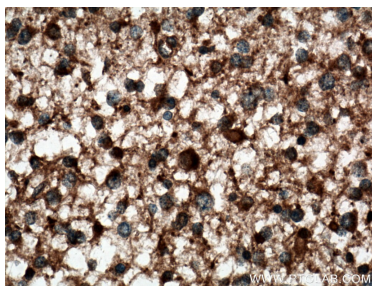
human brain tissue were subjected to SDS PAGE followed by western blot with 14703-1-AP (SEC6 antibody) at dilution of 1:86 incubated at room temperature for 1.5 hours.



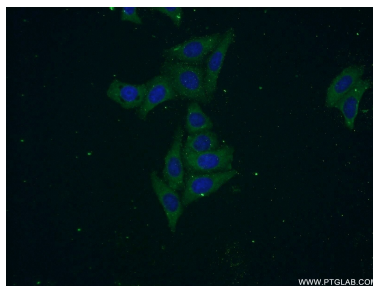
Various lysates were subjected to SDS PAGE followed by western blot with 14703-1-AP (SEC6 antibody) at dilution of 1:3000 incubated at room temperature for 1.5 hours.



Immunohistochemical analysis of paraffin-embedded human gliomas tissue slide using 14703-1-AP (SEC6 antibody) at dilution of 1:200 (under 10x lens. Heat mediated antigen retrieval with Tris-EDTA buffer (pH 9.0).



Immunohistochemical analysis of paraffin-embedded human gliomas tissue slide using 14703-1-AP (SEC6 antibody) at dilution of 1:200 (under 40x lens. Heat mediated antigen retrieval with Tris-EDTA buffer (pH 9.0).



Immunofluorescent analysis of HepG2 cells using 14703-1-AP (SEC6 antibody) at dilution of 1:50 and Alexa Fluor 488-conjugated AffiniPure Goat Anti-Rabbit IgG(H+L).