

For Research Use Only

PPP2R3A Polyclonal antibody

Catalog Number: 14720-1-AP **2 Publications**



Basic Information

Catalog Number: 14720-1-AP	GenBank Accession Number: BC065531	Purification Method: Antigen affinity purification
Size: 150ul , Concentration: 153 µg/ml by Bradford method using BSA as the standard;	GeneID (NCBI): 5523	Recommended Dilutions: WB 1:500-1:2000 IHC 1:20-1:200
Source: Rabbit	Full Name: protein phosphatase 2 (formerly 2A), regulatory subunit B ^α , alpha	
Isotype: IgG	Calculated MW: 130 kDa	
Immunogen Catalog Number: AG6450	Observed MW: 130 kDa	

Applications

Tested Applications: IHC, WB, ELISA	Positive Controls: WB : PC-3 cells, MCF-7 cells
Cited Applications: IF, WB	IHC : human skin tissue, human brain tissue, human kidney tissue, human lung tissue, human ovary tissue, human placenta tissue, human spleen tissue, human testis tissue
Species Specificity: human	
Cited Species: human	

Note-IHC: suggested antigen retrieval with TE buffer pH 9.0; (*) Alternatively, antigen retrieval may be performed with citrate buffer pH 6.0

Background Information

PPP2R3A(Serine/threonine-protein phosphatase 2A regulatory subunit B^α subunit alpha), also named as PPP2R3, has 2 isoforms produced by alternative splicing named as PR130 and PR72. The protein contains stretches of basic residues that may be putative nuclear localization signals, and a cluster of proline residues in an N-terminal region common to both isoforms that the isoform PR130 but not PR72 is variably expressed in a number of tumor cell lines. The PR72 and PR130 cDNAs encode 72 and 130 kDa proteins when expressed in rabbit reticulocyte lysates. (PMID:8392071).

Notable Publications

Author	Pubmed ID	Journal	Application
Xiao-Nian Zhu	24412756	Cell Signal	WB
Xiaoni Shi	35933397	Cell Biosci	WB,IF

Storage

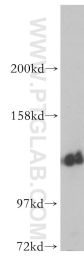
Storage:
Store at -20°C. Stable for one year after shipment.
Storage Buffer:
PBS with 0.02% sodium azide and 50% glycerol pH 7.3.
Aliquoting is unnecessary for -20°C storage

***** 20ul sizes contain 0.1% BSA**

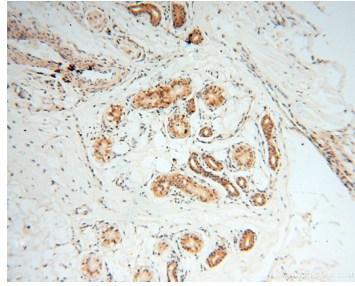
For technical support and original validation data for this product please contact:
T: 1 (888) 4PTGLAB (1-888-478-4522) (toll free in USA), or 1(312) 455-8498 (outside USA)
E: proteintech@ptglab.com
W: ptglab.com

This product is exclusively available under Proteintech Group brand and is not available to purchase from any other manufacturer.

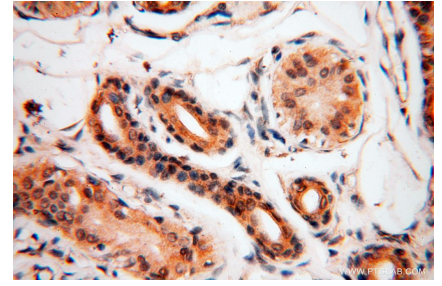
Selected Validation Data



PC-3 cells were subjected to SDS PAGE followed by western blot with 14720-1-AP (PPP2R3A antibody) at dilution of 1:300 incubated at room temperature for 1.5 hours.



Immunohistochemical analysis of paraffin-embedded human skin using 14720-1-AP (PPP2R3A antibody) at dilution of 1:100 (under 10x lens).



Immunohistochemical analysis of paraffin-embedded human skin using 14720-1-AP (PPP2R3A antibody) at dilution of 1:100 (under 40x lens).