

For Research Use Only

PSMB7 Polyclonal antibody

Catalog Number: 14727-1-AP **3 Publications**



Basic Information

Catalog Number: 14727-1-AP	GenBank Accession Number: BC000509	Purification Method: Antigen affinity purification
Size: 150ul , Concentration: 133 µg/ml by Bradford method using BSA as the standard;	GeneID (NCBI): 5695	Recommended Dilutions: WB 1:200-1:1000 IHC 1:20-1:200
Source: Rabbit	Full Name: proteasome (prosome, macropain) subunit, beta type, 7	
Isotype: IgG	Calculated MW: 29.9 kDa	
Immunogen Catalog Number: AG6486	Observed MW: 25-27 kDa	

Applications

Tested Applications: IHC, WB, ELISA	Positive Controls: WB : Raji cells, A549 cells
Cited Applications: WB	IHC : human colon cancer tissue, human breast cancer tissue, human colon tissue
Species Specificity: human, mouse, rat	
Cited Species: mouse, rat	

Note-IHC: suggested antigen retrieval with TE buffer pH 9.0; (*) Alternatively, antigen retrieval may be performed with citrate buffer pH 6.0

Background Information

Notable Publications

Author	Pubmed ID	Journal	Application
Xin Xie	35710020	Biochem Pharmacol	WB
Samir R Nath	29809168	J Clin Invest	WB
Wenjuan Zhang	33919255	Int J Mol Sci	WB

Storage

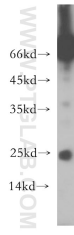
Storage:
Store at -20°C. Stable for one year after shipment.
Storage Buffer:
PBS with 0.02% sodium azide and 50% glycerol pH 7.3.
Aliquoting is unnecessary for -20°C storage

***** 20ul sizes contain 0.1% BSA**

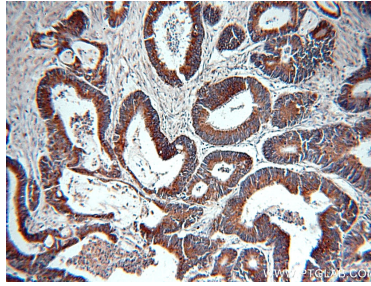
For technical support and original validation data for this product please contact:
T: 1 (888) 4PTGLAB (1-888-478-4522) (toll free in USA), or 1(312) 455-8498 (outside USA)
E: proteintech@ptglab.com
W: ptglab.com

This product is exclusively available under Proteintech Group brand and is not available to purchase from any other manufacturer.

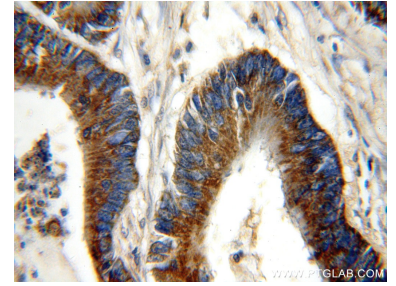
Selected Validation Data



Raji cells were subjected to SDS PAGE followed by western blot with 14727-1-AP (PSMB7 antibody) at dilution of 1:200 incubated at room temperature for 1.5 hours.



Immunohistochemical analysis of paraffin-embedded human colon cancer using 14727-1-AP (PSMB7 antibody) at dilution of 1:50 (under 10x lens).



Immunohistochemical analysis of paraffin-embedded human colon cancer using 14727-1-AP (PSMB7 antibody) at dilution of 1:50 (under 40x lens).