

For Research Use Only

IVNS1ABP Polyclonal antibody

Catalog Number: 14741-1-AP

1 Publications



Basic Information

Catalog Number:

14741-1-AP

Size:

150ul, Concentration: 200 ug/ml by Nanodrop and 193 ug/ml by Bradford method using BSA as the standard;

Source:

Rabbit

Isotype:

IgG

Immunogen Catalog Number:

AG6412

GenBank Accession Number:

BC067739

GeneID (NCBI):

10625

UNIPROT ID:

Q9Y6Y0

Full Name:

influenza virus NS1A binding protein

Calculated MW:

72 kDa

Observed MW:

70 kDa

Purification Method:

Antigen affinity purification

Recommended Dilutions:

WB 1:500-1:3000

IP 0.5-4.0 ug for 1.0-3.0 mg of total protein lysate

IHC 1:20-1:200

Applications

Tested Applications:

WB, IP, IHC, ELISA

Cited Applications:

WB

Species Specificity:

human, mouse, rat

Cited Species:

human

Note-IHC: suggested antigen retrieval with TE buffer pH 9.0; (*) Alternatively, antigen retrieval may be performed with citrate buffer pH 6.0

Positive Controls:

WB: mouse heart tissue, Apoptosised HeLa cells, HEK-293 cells, HeLa cells, K-562 cells, mouse ovary tissue

IP: mouse heart tissue,

IHC: human kidney tissue, human heart tissue, mouse kidney tissue

Notable Publications

Author	Pubmed ID	Journal	Application
Stefanie Jäger	22190034	Nature	WB

Storage

Storage:

Store at -20°C. Stable for one year after shipment.

Storage Buffer:

PBS with 0.02% sodium azide and 50% glycerol pH 7.3.

Aliquoting is unnecessary for -20°C storage

*** 20ul sizes contain 0.1% BSA

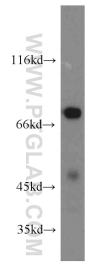
For technical support and original validation data for this product please contact:

T: 1 (888) 4PTGLAB (1-888-478-4522) (toll free in USA), or 1(312) 455-8498 (outside USA)

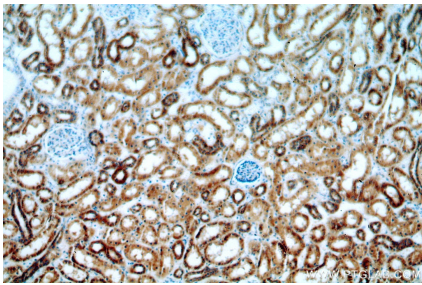
E: proteintech@ptglab.com
W: ptglab.com

This product is exclusively available under Proteintech Group brand and is not available to purchase from any other manufacturer.

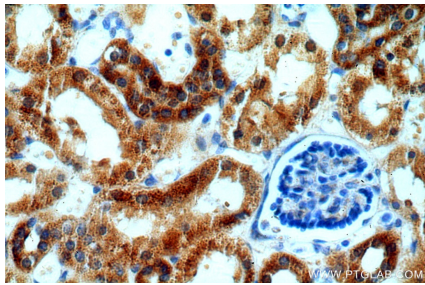
Selected Validation Data



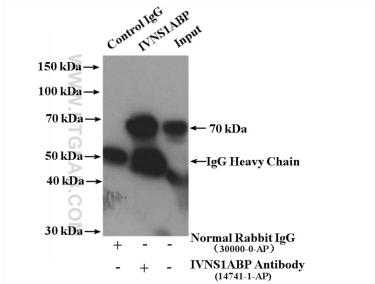
mouse heart tissue were subjected to SDS PAGE followed by western blot with 14741-1-AP (IVNS1ABP antibody) at dilution of 1:800 incubated at room temperature for 1.5 hours.



Immunohistochemical analysis of paraffin-embedded human kidney using 14741-1-AP (IVNS1ABP antibody) at dilution of 1:100 (under 10x lens).



Immunohistochemical analysis of paraffin-embedded human kidney using 14741-1-AP (IVNS1ABP antibody) at dilution of 1:100 (under 40x lens).



IP result of anti-IVNS1ABP (IP:14741-1-AP, 4ug; Detection:14741-1-AP 1:800) with mouse heart tissue lysate 4000ug.