

For Research Use Only

ACAT2 Polyclonal antibody

Catalog Number: 14755-1-AP

Featured Product

11 Publications



Basic Information

Catalog Number:

14755-1-AP

Size:

150ul, Concentration: 550 ug/ml by Nanodrop;

Source:

Rabbit

Isotype:

IgG

Immunogen Catalog Number:

AG6503

GenBank Accession Number:

BC000408

GeneID (NCBI):

39

UNIPROT ID:

Q9BWD1

Full Name:

acetyl-Coenzyme A acetyltransferase 2

Calculated MW:

41 kDa

Observed MW:

40-42 kDa

Purification Method:

Antigen affinity purification

Recommended Dilutions:

WB 1:2000-1:12000

IP 0.5-4.0 ug for 1.0-3.0 mg of total protein lysate

IHC 1:20-1:200

IF/ICC 1:200-1:800

Applications

Tested Applications:

WB, IHC, IF/ICC, FC (Intra), IP, ELISA

Cited Applications:

WB, IHC

Species Specificity:

human, mouse, rat

Cited Species:

human, mouse, rat

Note-IHC: suggested antigen retrieval with TE buffer pH 9.0; (*) Alternatively, antigen retrieval may be performed with citrate buffer pH 6.0

Positive Controls:

WB : Caco-2 cells, HepG2 cells, K-562 cells, MOLT-4 cells, mouse liver, rat liver

IP : mouse liver tissue,

IHC : human liver tissue, human lung tissue, human placenta tissue

IF/ICC : HepG2 cells,

Notable Publications

Author	Pubmed ID	Journal	Application
De Huang	27644987	Cell Res	WB
George D Dalton	34568800	iScience	WB
Yunxia Yang	31679333	J Agric Food Chem	WB

Storage

Storage:

Store at -20°C. Stable for one year after shipment.

Storage Buffer:

PBS with 0.02% sodium azide and 50% glycerol pH 7.3.

Aliquoting is unnecessary for -20°C storage

*** 20ul sizes contain 0.1% BSA

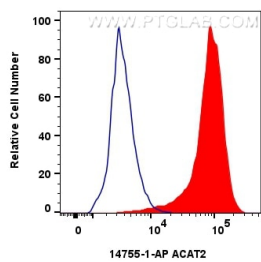
For technical support and original validation data for this product please contact:

T: 1 (888) 4PTGLAB (1-888-478-4522) (toll free in USA), or 1(312) 455-8498 (outside USA)

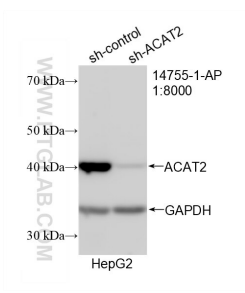
E: proteintech@ptglab.com
W: ptglab.com

This product is exclusively available under Proteintech Group brand and is not available to purchase from any other manufacturer.

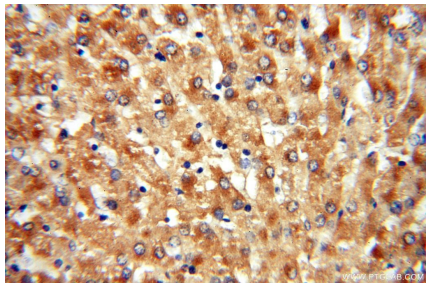
Selected Validation Data



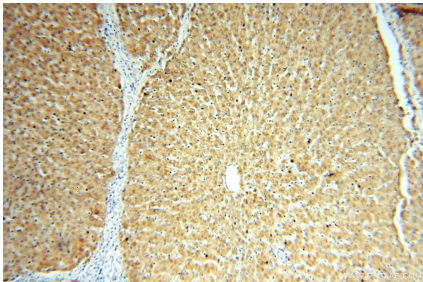
1x10⁶ HepG2 cells were intracellularly stained with 0.4 ug ACAT2 Polyclonal antibody (14755-1-AP) and CoraLite®488-Conjugated AffiniPure Goat Anti-Rabbit IgG(H+L) (SA00013-2)(red), or 0.4 ug Rabbit IgG control Rabbit PolyAb (30000-0-AP) (blue). Cells were fixed with 4% PFA and permeabilized with Flow Cytometry Perm Buffer (PF00011-C).



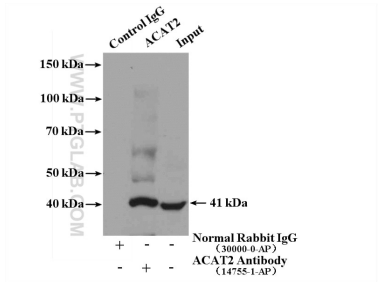
WB result of ACAT2 antibody (14755-1-AP; 1:8000; incubated at room temperature for 1.5 hours) with sh-Control and sh-ACAT2 transfected HepG2 cells.



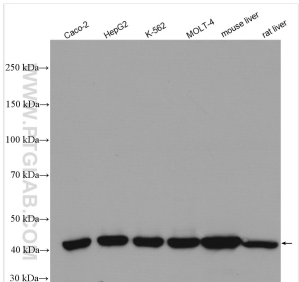
Immunohistochemical analysis of paraffin-embedded human liver using 14755-1-AP (ACAT2 antibody) at dilution of 1:100 (under 40x lens).



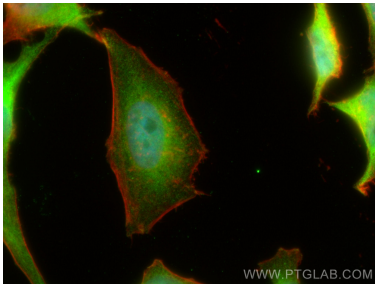
Immunohistochemical analysis of paraffin-embedded human liver using 14755-1-AP (ACAT2 antibody) at dilution of 1:100 (under 10x lens).



IP result of anti-ACAT2 (IP:14755-1-AP, 4ug; Detection:14755-1-AP 1:1000) with mouse liver tissue lysate 4000ug.



Various lysates were subjected to SDS PAGE followed by western blot with 14755-1-AP (ACAT2 antibody) at dilution of 1:6000 incubated at room temperature for 1.5 hours.



Immunofluorescent analysis of (4% PFA) fixed HepG2 cells using ACAT2 antibody (14755-1-AP) at dilution of 1:400 and CoraLite®488-Conjugated AffiniPure Goat Anti-Rabbit IgG(H+L) (SA00013-2), CL594-phalloidin (red).