

For Research Use Only

AARE Polyclonal antibody

Catalog Number: 14758-1-AP

1 Publications



Basic Information

Catalog Number:

14758-1-AP

Size:

150ul, Concentration: 450 ug/ml by Nanodrop;

Source:

Rabbit

Isotype:

IgG

Immunogen Catalog Number:

AG6511

GenBank Accession Number:

BC000362

GeneID (NCBI):

327

UNIPROT ID:

P13798

Full Name:

N-acylaminoacyl-peptide hydrolase

Calculated MW:

81 kDa

Observed MW:

66-80 kDa

Purification Method:

Antigen affinity purification

Recommended Dilutions:

WB 1:1000-1:4000

IHC 1:20-1:200

IF/ICC 1:200-1:800

Applications

Tested Applications:

WB, IHC, IF/ICC, ELISA

Cited Applications:

WB

Species Specificity:

human

Note-IHC: suggested antigen retrieval with TE buffer pH 9.0; (*) Alternatively, antigen retrieval may be performed with citrate buffer pH 6.0

Positive Controls:

WB : COLO 320 cells, HeLa cells, human plasma tissue

IHC : human liver tissue,

IF/ICC : HepG2 cells,

Background Information

APH, (APEH, acylpeptide hydrolase), which catalyzes the hydrolysis of the terminal acetylated amino acid preferentially from small acetylated peptides. The acylpeptide hydrolase is a homotetrameric protein of 300 kDa with each subunit consisting of 732 amino acid residues. A range of molecular masses have been reported for APH by previous investigators, including 80 kD, 75 kD and 69 kD. This antibody can recognize at least 2 isoforms of APH.

Notable Publications

Author	Pubmed ID	Journal	Application
Rubayet Elahi	31068431	mSphere	WB

Storage

Storage:

Store at -20°C. Stable for one year after shipment.

Storage Buffer:

PBS with 0.02% sodium azide and 50% glycerol pH 7.3.

Aliquoting is unnecessary for -20°C storage

*** 20ul sizes contain 0.1% BSA

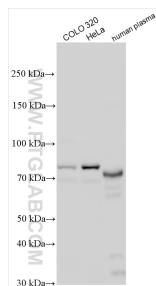
For technical support and original validation data for this product please contact:

T: 1 (888) 4PTGLAB (1-888-478-4522) (toll free in USA), or 1(312) 455-8498 (outside USA)

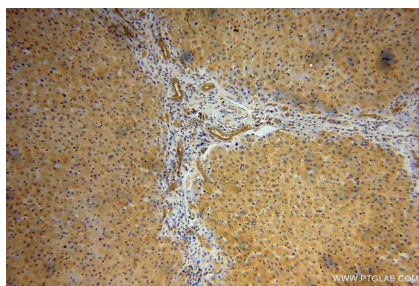
E: proteintech@ptglab.com
W: ptglab.com

This product is exclusively available under Proteintech Group brand and is not available to purchase from any other manufacturer.

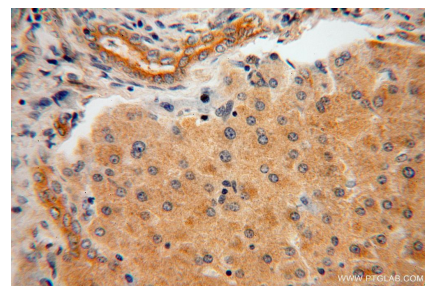
Selected Validation Data



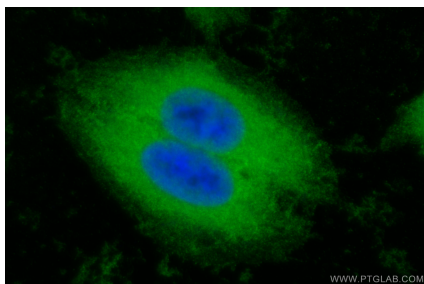
Various lysates were subjected to SDS PAGE followed by western blot with 14758-1-AP (AARE antibody) at dilution of 1:2000 incubated at room temperature for 1.5 hours.



Immunohistochemical analysis of paraffin-embedded human liver using 14758-1-AP (AARE antibody) at dilution of 1:100 (under 10x lens).



Immunohistochemical analysis of paraffin-embedded human liver using 14758-1-AP (AARE antibody) at dilution of 1:100 (under 40x lens).



Immunofluorescent analysis of (-20°C Ethanol) fixed HepG2 cells using AARE antibody (14758-1-AP) at dilution of 1:400 and CoraLite®488-Conjugated AffiniPure Goat Anti-Rabbit IgG(H+L) (SA00013-2).