

For Research Use Only

SMTNL2 Polyclonal antibody

Catalog Number: 14782-1-AP



Basic Information

Catalog Number:

14782-1-AP

Size:

150ul , Concentration: 450 ug/ml by Nanodrop and 213 ug/ml by Bradford method using BSA as the standard;

Source:

Rabbit

Isotype:

IgG

Immunogen Catalog Number:

AG6395

GenBank Accession Number:

BC112177

GeneID (NCBI):

342527

UNIPROT ID:

Q2TALS

Full Name:

smoothelin-like 2

Calculated MW:

50 kDa

Observed MW:

68-70 kDa

Purification Method:

Antigen affinity purification

Recommended Dilutions:

WB 1:500-1:3000

IP 0.5-4.0 ug for 1.0-3.0 mg of total protein lysate

IF/ICC 1:50-1:500

Applications

Tested Applications:

WB, IF/ICC, IP, ELISA

Species Specificity:

human, mouse, rat

Positive Controls:

WB : COLO 320 cells, MCF-7 cells, mouse small intestine tissue, SGC-7901 cells

IP : COLO 320 cells,

IF/ICC : MCF-7 cells,

Storage

Storage:

Store at -20°C. Stable for one year after shipment.

Storage Buffer:

PBS with 0.02% sodium azide and 50% glycerol pH 7.3.

Aliquoting is unnecessary for -20°C storage

*** 20ul sizes contain 0.1% BSA

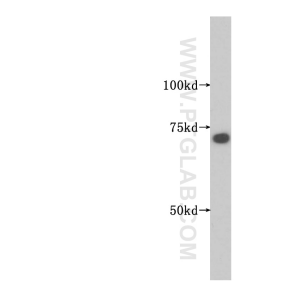
For technical support and original validation data for this product please contact:

T: 1 (888) 4PTGLAB (1-888-478-4522) (toll free in USA), or 1(312) 455-8498 (outside USA)

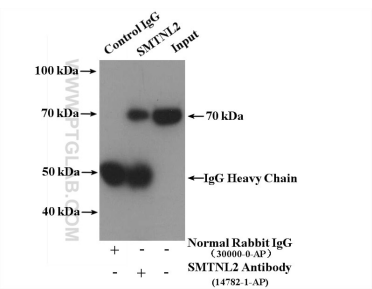
E: proteintech@ptglab.com
W: ptglab.com

This product is exclusively available under Proteintech Group brand and is not available to purchase from any other manufacturer.

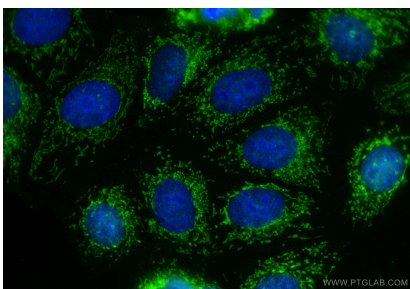
Selected Validation Data



COLO 320 cells were subjected to SDS PAGE followed by western blot with 14782-1-AP (SMTNL2 antibody) at dilution of 1:500 incubated at room temperature for 1.5 hours.



IP result of anti-SMTNL2 (IP:14782-1-AP, 4ug; Detection:14782-1-AP 1:500) with COLO 320 cells lysate 4000ug.



Immunofluorescent analysis of (4% PFA) fixed MCF-7 cells using SMTNL2 antibody (14782-1-AP) at dilution of 1:200 and CoraLite®488-Conjugated Goat Anti-Rabbit IgG(H+L) (SA00013-2).