

For Research Use Only

CBS Polyclonal antibody

Catalog Number: 14787-1-AP

Featured Product

131 Publications



Basic Information

Catalog Number:

14787-1-AP

Size:

150ul, Concentration: 700 ug/ml by Nanodrop;

Source:

Rabbit

Isotype:

IgG

Immunogen Catalog Number:

AG6437

GenBank Accession Number:

BC000440

GeneID (NCBI):

875

UNIPROT ID:

P35520

Full Name:

cystathionine-beta-synthase

Calculated MW:

61 kDa

Observed MW:

61-63 kDa

Purification Method:

Antigen affinity purification

Recommended Dilutions:

WB: 1:1000-1:5000

IP: 0.5-4.0 ug for 1.0-3.0 mg of total protein lysate

IHC: 1:100-1:400

IF/ICC: 1:50-1:500

Applications

Tested Applications:

WB, IHC, IF/ICC, IP, ELISA

Cited Applications:

WB, IHC, IF

Species Specificity:

human, mouse, rat

Cited Species:

human, mouse, rat, pig, rabbit, canine

Note-IHC: suggested antigen retrieval with TE buffer pH 9.0; (*) Alternatively, antigen retrieval may be performed with citrate buffer pH 6.0

Positive Controls:

WB: HEK-293 cells, HeLa cells, mouse colon tissue, NCI-H1299 cells, rat brain tissue, rat kidney tissue, rat liver tissue, HepG2 cells, LNCaP cells, MCF-7 cells, SKOV-3 cells, THP-1 cells, mouse kidney tissue

IP: mouse kidney tissue,

IHC: human pancreas cancer tissue, human colon tissue, mouse kidney tissue

IF/ICC: HeLa cells,

Background Information

The CBS gene encodes cystathionine beta-synthase, which catalyzes the first irreversible step of transsulfuration. The CBS enzyme is a homotetramer of 63-kD subunits and requires pyridoxal phosphate and heme for activity(PMID:11230183). CBS protein is localized in most areas of the brain, but predominantly in the cell bodies and neuronal processes of Purkinje cells and Ammon's horn neurons(PMID:12588964).

Notable Publications

Author	Pubmed ID	Journal	Application
Pilar González-García	32975579	Hum Mol Genet	WB
Shanwen Chen	31542354	Cancer Lett	WB,IHC,IF
Ches'Nique M Phillips	28923859	Cancer Res	WB,IHC

Storage

Storage:

Store at -20°C. Stable for one year after shipment.

Storage Buffer:

PBS with 0.02% sodium azide and 50% glycerol, pH7.3

Aliquoting is unnecessary for -20°C storage

*** 20ul sizes contain 0.1% BSA

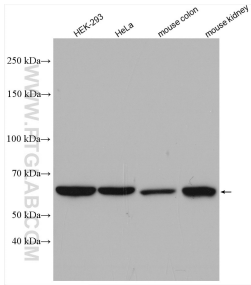
For technical support and original validation data for this product please contact:

T: 1 (888) 4PTGLAB (1-888-478-4522) (toll free in USA), or 1(312) 455-8498 (outside USA)

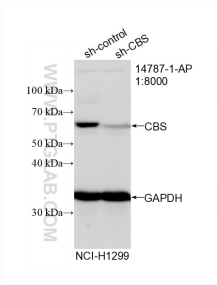
E: proteintech@ptglab.com
W: ptglab.com

This product is exclusively available under Proteintech Group brand and is not available to purchase from any other manufacturer.

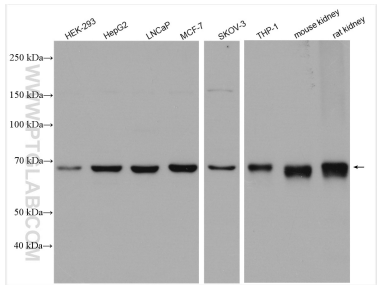
Selected Validation Data



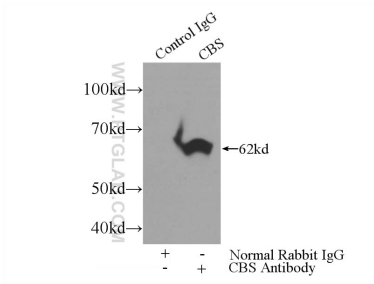
Various lysates were subjected to SDS PAGE followed by western blot with 14787-1-AP (CBS antibody) at dilution of 1:2500 incubated at room temperature for 1.5 hours.



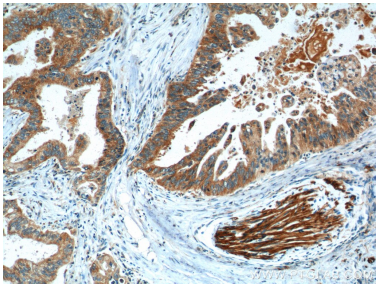
WB result of CBS antibody (14787-1-AP; 1:8000; incubated at room temperature for 1.5 hours) with sh-Control and sh-CBS transfected NCI-H1299 cells.



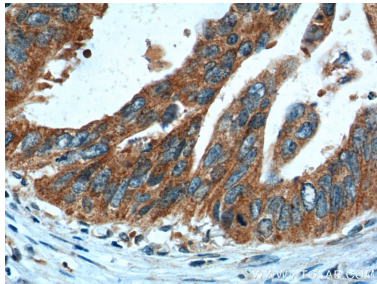
Various lysates were subjected to SDS PAGE followed by western blot with 14787-1-AP (CBS antibody) at dilution of 1:8000 incubated at room temperature for 1.5 hours.



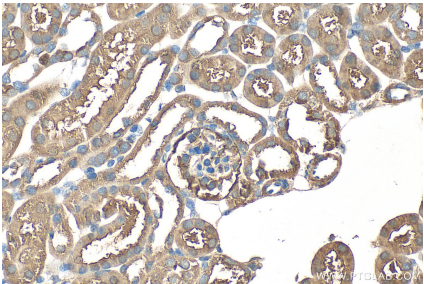
IP result of anti-CBS (IP:14787-1-AP, 3ug; Detection:14787-1-AP 1:500) with mouse kidney tissue lysate 4000ug.



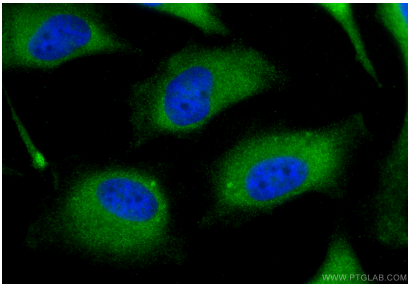
Immunohistochemical analysis of paraffin-embedded human pancreas cancer tissue slide using 14787-1-AP (CBS Antibody) at dilution of 1:200 (under 10x lens). Heat mediated antigen retrieval with Tris-EDTA buffer (pH 9.0).



Immunohistochemical analysis of paraffin-embedded human pancreas cancer tissue slide using 14787-1-AP (CBS Antibody) at dilution of 1:200 (under 40x lens). Heat mediated antigen retrieval with Tris-EDTA buffer (pH 9.0).



Immunohistochemical analysis of paraffin-embedded mouse kidney tissue slide using 14787-1-AP (CBS antibody) at dilution of 1:200 (under 40x lens). Heat mediated antigen retrieval with Tris-EDTA buffer (pH 9.0).



Immunofluorescent analysis of (-20°C Methanol) fixed HeLa cells using CBS antibody (14787-1-AP) at dilution of 1:200 and CoraLite®488-Conjugated Goat Anti-Rabbit IgG(H+L) (SA00013-2).