

For Research Use Only

RPS28 Polyclonal antibody

Catalog Number: 14796-1-AP

Featured Product

2 Publications



Basic Information

Catalog Number:

14796-1-AP

Size:

150ul, Concentration: 300 ug/ml by Nanodrop and 187 ug/ml by Bradford method using BSA as the standard;

Source:

Rabbit

Isotype:

IgG

Immunogen Catalog Number:

AG6505

GenBank Accession Number:

BC000354

GeneID (NCBI):

6234

UNIPROT ID:

P62857

Full Name:

ribosomal protein S28

Calculated MW:

8 kDa

Purification Method:

Antigen affinity purification

Recommended Dilutions:

IHC 1:20-1:200

Applications

Tested Applications:

IHC, ELISA

Cited Applications:

WB, IHC

Species Specificity:

human, mouse, rat

Cited Species:

human, rat

Note-IHC: suggested antigen retrieval with TE buffer pH 9.0; (*) Alternatively, antigen retrieval may be performed with citrate buffer pH 6.0

Positive Controls:

IHC : human pancreas cancer tissue,

Notable Publications

Author	Pubmed ID	Journal	Application
Zhenyuan Wei	35615641	J Orthop Translat	WB,IHC
Yemin Wang	24762395	Cancer Res	WB

Storage

Storage:

Store at -20°C. Stable for one year after shipment.

Storage Buffer:

PBS with 0.02% sodium azide and 50% glycerol pH 7.3.

Aliquoting is unnecessary for -20°C storage

*** 20ul sizes contain 0.1% BSA

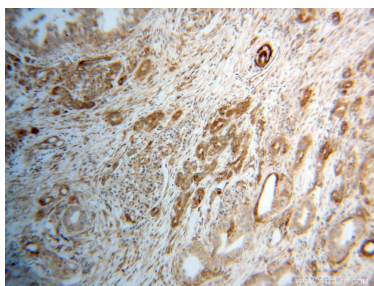
For technical support and original validation data for this product please contact:

T: 1 (888) 4PTGLAB (1-888-478-4522) (toll free in USA), or 1(312) 455-8498 (outside USA)

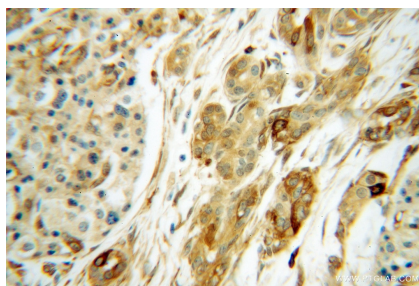
E: proteintech@ptglab.com
W: ptglab.com

This product is exclusively available under Proteintech Group brand and is not available to purchase from any other manufacturer.

Selected Validation Data



Immunohistochemical analysis of paraffin-embedded human pancreas cancer using 14796-1-AP (RPS28 antibody) at dilution of 1:50 (under 10x lens).



Immunohistochemical analysis of paraffin-embedded human pancreas cancer using 14796-1-AP (RPS28 antibody) at dilution of 1:50 (under 40x lens).