

For Research Use Only

CRIP2 Polyclonal antibody

Catalog Number: 14801-1-AP **1 Publications**



Basic Information

Catalog Number: 14801-1-AP	GenBank Accession Number: BC000434	Purification Method: Antigen affinity purification
Size: 150ul , Concentration: 450 µg/ml by Nanodrop and 253 µg/ml by Bradford method using BSA as the standard;	GeneID (NCBI): 1397	Recommended Dilutions: WB 1:500-1:3000 IF 1:20-1:200
Source: Rabbit	Full Name: cysteine-rich protein 2	
Isotype: IgG	Calculated MW: 22 kDa	
Immunogen Catalog Number: AG6515	Observed MW: 23-29 kDa	

Applications

Tested Applications: IF, WB, ELISA	Positive Controls:
Cited Applications: IF, IP, WB	WB: mouse heart tissue, HeLa cells, MCF-7 cells, mouse brain tissue, mouse lung tissue
Species Specificity: human, mouse, rat	IF: HeLa cells,
Cited Species: rat	

Background Information

Notable Publications

Author	Pubmed ID	Journal	Application
Alzbeta Hulikova	35357563	Basic Res Cardiol	WB, IF, IP

Storage

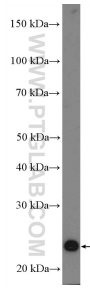
Storage:
Store at -20°C. Stable for one year after shipment.
Storage Buffer:
PBS with 0.02% sodium azide and 50% glycerol pH 7.3.
Aliquoting is unnecessary for -20°C storage

*** 20ul sizes contain 0.1% BSA

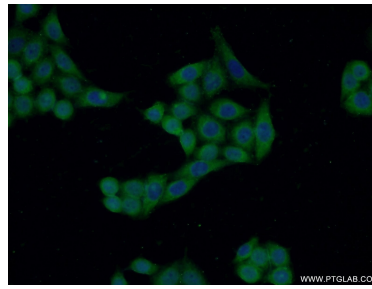
For technical support and original validation data for this product please contact:
T: 1 (888) 4PTGLAB (1-888-478-4522) (toll free in USA), or 1(312) 455-8498 (outside USA)
E: proteintech@ptglab.com
W: ptglab.com

This product is exclusively available under Proteintech Group brand and is not available to purchase from any other manufacturer.

Selected Validation Data



mouse heart tissue were subjected to SDS PAGE followed by western blot with 14801-1-AP (CRIP2 Antibody) at dilution of 1:1500 incubated at room temperature for 1.5 hours.



Immunofluorescent analysis of HeLa cells using 14801-1-AP (CRIP2 antibody) at dilution of 1:50 and Alexa Fluor 488-conjugated AffiniPure Goat Anti-Rabbit IgG(H+L).