

For Research Use Only

PIG3 Polyclonal antibody

Catalog Number: 14828-1-AP

3 Publications



Basic Information

Catalog Number:

14828-1-AP

Size:

150ul, Concentration: 453 ug/ml by Nanodrop and 453 ug/ml by Bradford method using BSA as the standard;

Source:

Rabbit

Isotype:

IgG

Immunogen Catalog Number:

AG6618

GenBank Accession Number:

BC000474

GeneID (NCBI):

9540

UNIPROT ID:

Q53FA7

Full Name:

tumor protein p53 inducible protein 3

Calculated MW:

35 kDa

Observed MW:

34-36 kDa

Purification Method:

Antigen affinity purification

Recommended Dilutions:

WB 1:500-1:2000

IP 0.5-4.0 ug for 1.0-3.0 mg of total protein lysate

IHC 1:100-1:400

IF/ICC 1:50-1:500

Applications

Tested Applications:

WB, IHC, IF/ICC, IP, ELISA

Cited Applications:

WB, IF

Species Specificity:

human

Cited Species:

human

Note-IHC: suggested antigen retrieval with TE buffer pH 9.0; (*) Alternatively, antigen retrieval may be performed with citrate buffer pH 6.0

Positive Controls:

WB : HeLa cells, HepG2 cells, MCF-7 cells, SMMC-7721 cells

IP : MCF-7 cells,

IHC : human liver cancer tissue,

IF/ICC : HepG2 cells,

Notable Publications

Author	Pubmed ID	Journal	Application
Rou Xie	34051669	Biomaterials	WB,IF
Ling Xu	39290961	Oncol Lett	WB
Yang Wang	38692134	Virology	WB

Storage

Storage:

Store at -20°C. Stable for one year after shipment.

Storage Buffer:

PBS with 0.02% sodium azide and 50% glycerol pH 7.3.

Aliquoting is unnecessary for -20°C storage

*** 20ul sizes contain 0.1% BSA

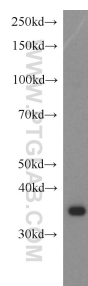
For technical support and original validation data for this product please contact:

T: 1 (888) 4PTGLAB (1-888-478-4522) (toll free in USA), or 1(312) 455-8498 (outside USA)

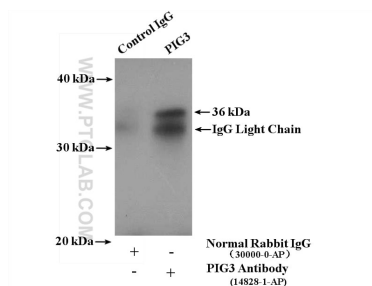
E: proteintech@ptglab.com
W: ptglab.com

This product is exclusively available under Proteintech Group brand and is not available to purchase from any other manufacturer.

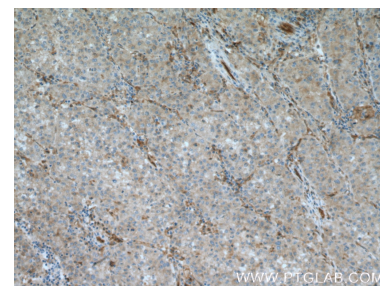
Selected Validation Data



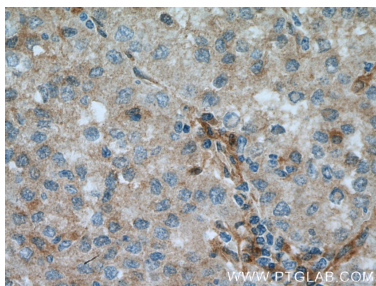
HeLa cells were subjected to SDS PAGE followed by western blot with 14828-1-AP (PIG3 antibody) at dilution of 1:1000 incubated at room temperature for 1.5 hours.



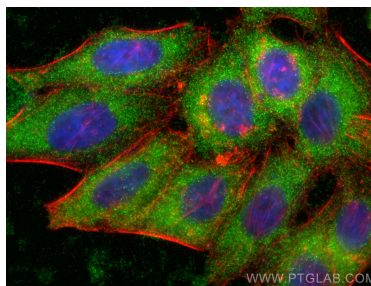
IP result of anti-PIG3 (IP:14828-1-AP, 4ug; Detection:14828-1-AP 1:500) with MCF-7 cells lysate 3200ug.



Immunohistochemical analysis of paraffin-embedded human liver cancer tissue slide using 14828-1-AP (PIG3 antibody at dilution of 1:200 (under 10x lens). Heat mediated antigen retrieval with Tris-EDTA buffer (pH 9.0).



Immunohistochemical analysis of paraffin-embedded human liver cancer tissue slide using 14828-1-AP (PIG3 antibody at dilution of 1:200 (under 40x lens). Heat mediated antigen retrieval with Tris-EDTA buffer (pH 9.0).



Immunofluorescent analysis of (-20°C Ethanol) fixed HepG2 cells using PIG3 antibody (14828-1-AP) at dilution of 1:200 and CoraLite®488-Conjugated AffiniPure Goat Anti-Rabbit IgG(H+L) (SA00013-2), CL594-phalloidin (red).