

For Research Use Only

# MARS Polyclonal antibody

Catalog Number: 14829-1-AP

Featured Product

6 Publications



## Basic Information

### Catalog Number:

14829-1-AP

### Size:

150ul, Concentration: 750 ug/ml by Nanodrop and 367 ug/ml by Bradford method using BSA as the standard;

### Source:

Rabbit

### Isotype:

IgG

### Immunogen Catalog Number:

AG6619

### GenBank Accession Number:

BC002384

### GeneID (NCBI):

4141

### UNIPROT ID:

P56192

### Full Name:

methionyl-tRNA synthetase

### Calculated MW:

101 kDa

### Observed MW:

101 kDa

### Purification Method:

Antigen affinity purification

### Recommended Dilutions:

WB 1:5000-1:50000

IP 0.5-4.0 ug for 1.0-3.0 mg of total protein lysate

IHC 1:50-1:500

IF/ICC 1:50-1:500

## Applications

### Tested Applications:

WB, IHC, IF/ICC, IP, ELISA

### Cited Applications:

WB, IHC

### Species Specificity:

human

### Cited Species:

human, mouse

**Note-IHC: suggested antigen retrieval with TE buffer pH 9.0; (\*) Alternatively, antigen retrieval may be performed with citrate buffer pH 6.0**

### Positive Controls:

WB : HeLa cells, HepG2 cells

IP : HepG2 cells,

IHC : human kidney tissue,

IF/ICC : HepG2 cells,

## Notable Publications

Author	Pubmed ID	Journal	Application
Krishnendu Khan	36037331	Proc Natl Acad Sci U S A	WB
Lingyan Zhou	36437524	Aging Cell	WB
Qin Jin	32404475	J Clin Pathol	WB,IHC

## Storage

### Storage:

Store at -20°C. Stable for one year after shipment.

### Storage Buffer:

PBS with 0.02% sodium azide and 50% glycerol, pH7.3

Aliquoting is unnecessary for -20°C storage

\*\*\* 20ul sizes contain 0.1% BSA

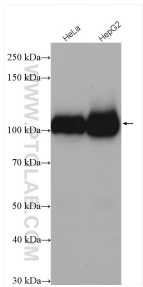
For technical support and original validation data for this product please contact:

T: 1 (888) 4PTGLAB (1-888-478-4522) (toll free in USA), or 1(312) 455-8498 (outside USA)

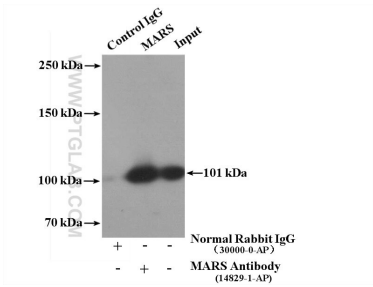
E: [proteintech@ptglab.com](mailto:proteintech@ptglab.com)  
W: [ptglab.com](http://ptglab.com)

This product is exclusively available under Proteintech Group brand and is not available to purchase from any other manufacturer.

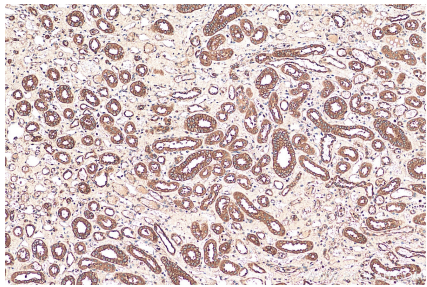
Selected Validation Data



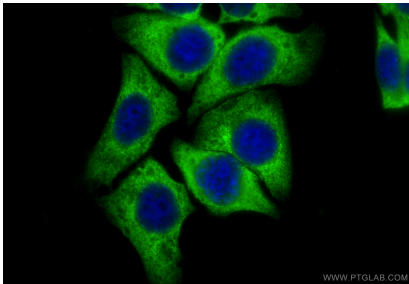
Various lysates were subjected to SDS PAGE followed by western blot with 14829-1-AP (MARS antibody) at dilution of 1:20000 incubated at room temperature for 1.5 hours.



IP result of anti-MARS (IP:14829-1-AP, 4ug; Detection:14829-1-AP 1:2000) with HepG2 cells lysate 4000ug.



Immunohistochemical analysis of paraffin-embedded human kidney tissue slide using 14829-1-AP (MARS antibody) at dilution of 1:200 (under 10x lens). Heat mediated antigen retrieval with Tris-EDTA buffer (pH 9.0).



Immunofluorescent analysis of (-20°C Ethanol) fixed HepG2 cells using MARS antibody (14829-1-AP) at dilution of 1:200 and CoraLite®488-Conjugated Goat Anti-Rabbit IgG(H+L) (SA00013-2).