

For Research Use Only

RPS24 Polyclonal antibody

Catalog Number: 14831-1-AP

4 Publications



Basic Information

Catalog Number:

14831-1-AP

Size:

150ul, Concentration: 180 ug/ml by Nanodrop and 180 ug/ml by Bradford method using BSA as the standard;

Source:

Rabbit

Isotype:

IgG

Immunogen Catalog Number:

AG6621

GenBank Accession Number:

BC000523

GeneID (NCBI):

6229

UNIPROT ID:

P62847

Full Name:

ribosomal protein S24

Calculated MW:

15 kDa

Observed MW:

18 kDa

Purification Method:

Antigen affinity purification

Recommended Dilutions:

WB 1:200-1:1000

IF/ICC 1:20-1:200

Applications

Tested Applications:

WB, IF/ICC, ELISA

Cited Applications:

WB, IHC

Species Specificity:

human, mouse, rat

Cited Species:

human, mouse

Positive Controls:

WB : SH-SY5Y cells, HEK-293 cells, HL-60 cells

IF/ICC : SH-SY5Y cells,

Background Information

40S ribosomal protein S24 (RPS24) is a 133 amino acid protein, which belongs to the ribosomal protein S24e family. RPS24 is required for processing of pre-rRNA and maturation of 40S ribosomal subunits. RPS24 has an association with Diamond-Blackfan anemia 3.

Notable Publications

Author	Pubmed ID	Journal	Application
Haiyuan Li	36614249	Int J Mol Sci	IHC
Guodong Cai	35395601	Ecotoxicol Environ Saf	WB
Maosheng Cheng	38619620	Cancer Immunol Immunother	IHC

Storage

Storage:

Store at -20°C. Stable for one year after shipment.

Storage Buffer:

PBS with 0.02% sodium azide and 50% glycerol pH 7.3.

Aliquoting is unnecessary for -20°C storage

*** 20ul sizes contain 0.1% BSA

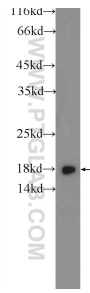
For technical support and original validation data for this product please contact:

T: 1 (888) 4PTGLAB (1-888-478-4522) (toll free in USA), or 1(312) 455-8498 (outside USA)

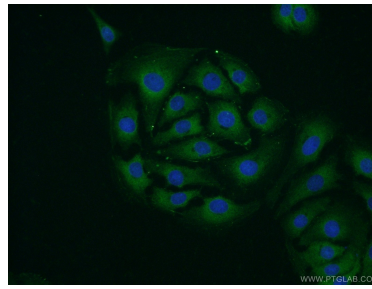
E: proteintech@ptglab.com
W: ptglab.com

This product is exclusively available under Proteintech Group brand and is not available to purchase from any other manufacturer.

Selected Validation Data



SH-SY5Y cells were subjected to SDS PAGE followed by western blot with 14831-1-AP (RPS24 Antibody) at dilution of 1:300 incubated at room temperature for 1.5 hours.



Immunofluorescent analysis of SH-SY5Y cells using 14831-1-AP (RPS24 antibody) at dilution of 1:50 and Alexa Fluor 488-conjugated AffiniPure Goat Anti-Rabbit IgG(H+L).