

For Research Use Only

SLC25A6-Specific Polyclonal antibody

Catalog Number: 14841-1-AP

Featured Product

6 Publications



Basic Information

Catalog Number:

14841-1-AP

Size:

150ul, Concentration: 450 ug/ml by Nanodrop and 273 ug/ml by Bradford method using BSA as the standard;

Source:

Rabbit

Isotype:

IgG

GenBank Accession Number:

NM_001636

GeneID (NCBI):

293

UNIPROT ID:

P12236

Full Name:

solute carrier family 25 (mitochondrial carrier; adenine nucleotide translocator), member 6

Calculated MW:

33 kDa

Observed MW:

30-33 kDa

Purification Method:

Antigen affinity purification

Recommended Dilutions:

WB 1:500-1:2000

IP 0.5-4.0 ug for 1.0-3.0 mg of total protein lysate

IHC 1:20-1:200

IF/ICC 1:10-1:100

Applications

Tested Applications:

WB, IHC, IF/ICC, IP, ELISA

Cited Applications:

WB, IHC, IF, CoIP

Species Specificity:

human, mouse

Cited Species:

human

Note-IHC: suggested antigen retrieval with TE buffer pH 9.0; (*) Alternatively, antigen retrieval may be performed with citrate buffer pH 6.0

Positive Controls:

WB: L02 cells, HEK-293 cells, human liver tissue, human heart tissue, human placenta tissue, HEK-293T cells

IP: mouse liver tissue,

IHC: human skeletal muscle tissue, human heart tissue, human kidney tissue, human liver tissue

IF/ICC: HepG2 cells, MCF-7 cells

Background Information

SLC25A6, also known as ANT3 (adenine nucleotide translocase 3), is a member of the solute carrier family 25, specifically the mitochondrial carrier subfamily. As part of the mitochondrial carrier family, SLC25A6 plays a role in the mitochondrial energy production process by facilitating the exchange of metabolites necessary for oxidative phosphorylation (PMID: 23506884).

Notable Publications

Author	Pubmed ID	Journal	Application
Ridhima Gomkale	32142709	Curr Biol	WB
Yi Hao	33602229	Cancer Cell Int	WB,IF
Sylvie Callegari	27718247	FEBS Lett	WB

Storage

Storage:

Store at -20°C. Stable for one year after shipment.

Storage Buffer:

PBS with 0.02% sodium azide and 50% glycerol pH 7.3.

Aliquoting is unnecessary for -20°C storage

*** 20ul sizes contain 0.1% BSA

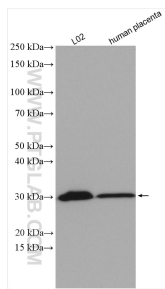
For technical support and original validation data for this product please contact:

T: 1 (888) 4PTGLAB (1-888-478-4522) (toll free in USA), or 1(312) 455-8498 (outside USA)

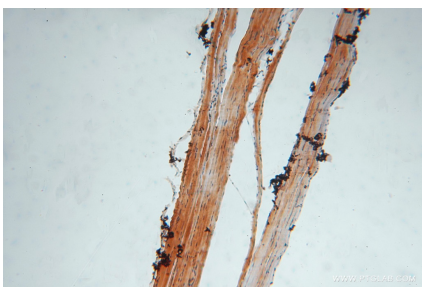
E: proteintech@ptglab.com
W: ptglab.com

This product is exclusively available under Proteintech Group brand and is not available to purchase from any other manufacturer.

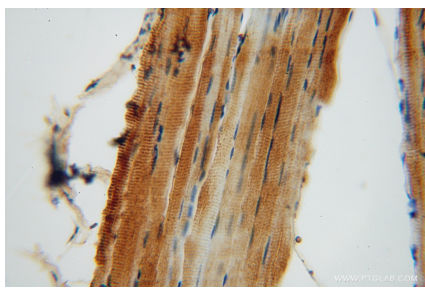
Selected Validation Data



Various lysates were subjected to SDS PAGE followed by western blot with 14841-1-AP (SLC25A6-Specific antibody) at dilution of 1:1000 incubated at room temperature for 1.5 hours.



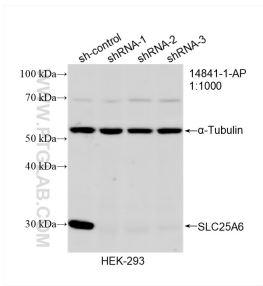
Immunohistochemical analysis of paraffin-embedded human skeletal muscle using 14841-1-AP (SLC25A6-Specific antibody) at dilution of 1:100 (under 10x lens).



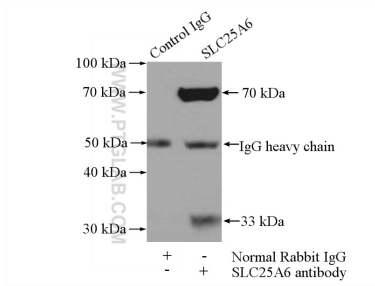
Immunohistochemical analysis of paraffin-embedded human skeletal muscle using 14841-1-AP (SLC25A6-Specific antibody) at dilution of 1:100 (under 40x lens).



Immunofluorescent analysis of HepG2 cells using 14841-1-AP (SLC25A6-Specific antibody) at dilution of 1:25 and Rhodamine-Goat anti-Rabbit IgG.



WB result of SLC25A6-Specific antibody (14841-1-AP; 1:1000; incubated at room temperature for 1.5 hours) with sh-Control and sh-SLC25A6-Specific transfected HEK-293 cells.



IP result of anti-SLC25A6-Specific (IP:14841-1-AP, 4ug; Detection:14841-1-AP 1:500) with mouse liver tissue lysate 4000ug.