

For Research Use Only

CTRL Polyclonal antibody

Catalog Number: 14856-1-AP

3 Publications



Basic Information

Catalog Number:

14856-1-AP

Size:

150ul, Concentration: 140 ug/ml by Nanodrop and 140 ug/ml by Bradford method using BSA as the standard;

Source:

Rabbit

Isotype:

IgG

Immunogen Catalog Number:

AG6644

GenBank Accession Number:

BC063475

GeneID (NCBI):

1506

UNIPROT ID:

P40313

Full Name:

chymotrypsin-like

Calculated MW:

28 kDa

Observed MW:

25-28 kDa

Purification Method:

Antigen affinity purification

Recommended Dilutions:

WB 1:1000-1:6000

IHC 1:20-1:200

IF/ICC 1:10-1:100

Applications

Tested Applications:

WB, IHC, IF/ICC, ELISA

Cited Applications:

WB

Species Specificity:

human, mouse, rat

Cited Species:

human, mouse

Positive Controls:

WB : mouse pancreas tissue, BxPC-3 cells

IHC : human pancreas tissue,

IF/ICC : BxPC-3 cells,

Note-IHC: suggested antigen retrieval with TE buffer pH 9.0; (*) Alternatively, antigen retrieval may be performed with citrate buffer pH 6.0

Background Information

CTRL(Chymotrypsin-like protease) is also named as CTRL1 and belongs to the peptidase S1 family. The CTRL1 enzyme is active over a broad pH range. It expresses in pancreas and presence in intestinal fluid after stimulation of pancreatic secretion as a digestive enzyme(PMID:9065485). This gene encode a protein of 264 amino acid and the protein has a signal peptide of 18 amino acid and a propeptide of 15 amino acid.

Notable Publications

| Author | Pubmed ID | Journal | Application |
|---------------------|-----------|----------------|-------------|
| Timothy L Hostelley | 34125181 | Biol Open | WB |
| Susan A Maroney | 30086574 | Thromb Haemost | WB |
| Yingying Xie | 27081040 | Oncotarget | |

Storage

Storage:

Store at -20°C. Stable for one year after shipment.

Storage Buffer:

PBS with 0.02% sodium azide and 50% glycerol pH 7.3.

Aliquoting is unnecessary for -20°C storage

*** 20ul sizes contain 0.1% BSA

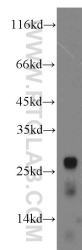
For technical support and original validation data for this product please contact:

T: 1 (888) 4PTGLAB (1-888-478-4522) (toll free in USA), or 1(312) 455-8498 (outside USA)

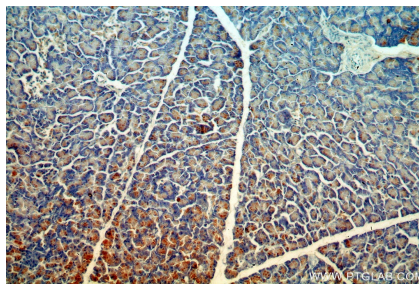
E: proteintech@ptglab.com
W: ptglab.com

This product is exclusively available under Proteintech Group brand and is not available to purchase from any other manufacturer.

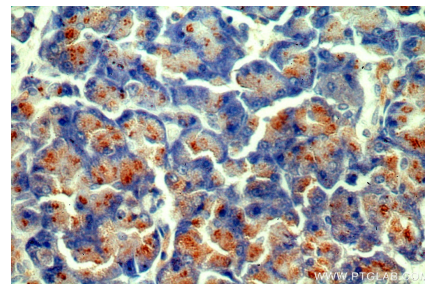
Selected Validation Data



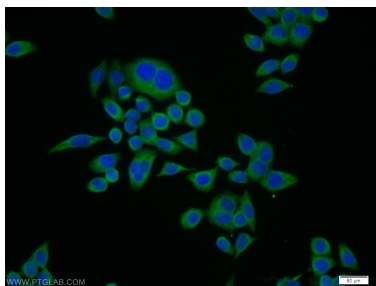
mouse pancreas tissue were subjected to SDS PAGE followed by western blot with 14856-1-AP (CTRL antibody) at dilution of 1:3000 incubated at room temperature for 1.5 hours.



Immunohistochemical analysis of paraffin-embedded human pancreas using 14856-1-AP (CTRL antibody) at dilution of 1:100 (under 10x lens).



Immunohistochemical analysis of paraffin-embedded human pancreas using 14856-1-AP (CTRL antibody) at dilution of 1:100 (under 40x lens).



Immunofluorescent analysis of BxPC-3 cells using 14856-1-AP (CTRL antibody) at dilution of 1:25 and Alexa Fluor 488-conjugated Goat Anti-Rabbit IgG(H+L).