

For Research Use Only

# SDHA Polyclonal antibody

Catalog Number: 14865-1-AP

Featured Product

122 Publications



## Basic Information

### Catalog Number:

14865-1-AP

### Size:

150ul, Concentration: 550 ug/ml by Nanodrop;

### Source:

Rabbit

### Isotype:

IgG

### Immunogen Catalog Number:

AG6677

### GenBank Accession Number:

BC001380

### GeneID (NCBI):

6389

### UNIPROT ID:

P31040

### Full Name:

succinate dehydrogenase complex, subunit A, flavoprotein (Fp)

### Calculated MW:

73 kDa

### Observed MW:

62-73 kDa

### Purification Method:

Antigen affinity purification

### Recommended Dilutions:

WB: 1:5000-1:50000

IP: 0.5-4.0 ug for 1.0-3.0 mg of total protein lysate

IHC: 1:50-1:500

IF/ICC: 1:200-1:800

## Applications

### Tested Applications:

WB, IHC, IF/ICC, IP, ELISA

### Cited Applications:

WB, IHC, IF, IP

### Species Specificity:

human, mouse, rat

### Cited Species:

human, mouse, rat, pig, zebrafish

**Note-IHC: suggested antigen retrieval with TE buffer pH 9.0; (\*) Alternatively, antigen retrieval may be performed with citrate buffer pH 6.0**

### Positive Controls:

WB: HEK-293 cells, HeLa cells, HepG2 cells, mouse brain tissue, rat brain tissue

IP: HEK-293 cells,

IHC: human liver cancer tissue,

IF/ICC: HepG2 cells,

## Background Information

SDHA, also named as SDH2, SDHF and Fp, belongs to the FAD-dependent oxidoreductase 2 family and FRD/SDH subfamily. SDHA is the flavoprotein subunit of succinate dehydrogenase (SDH) that is involved in complex II of the mitochondrial electron transport chain and is responsible for transferring electrons from succinate to ubiquinone (coenzyme Q). SDHA has 3 isoforms with the molecular mass of 73, 67 and 57 kDa, and the N-terminal (~5 kDa) can be removed in mature form. It can be detected a band of 68 kDa in cutaneous melanoma (PMID:21698147). SDHA may act as a tumor suppressor.

## Notable Publications

Author	Pubmed ID	Journal	Application
Yujie Li	31563988	Arch Toxicol	WB
Yuehong Wang	32918657	Cardiovasc Drugs Ther	WB
Delong Yin	34497154	Aging (Albany NY)	WB

## Storage

### Storage:

Store at -20°C. Stable for one year after shipment.

### Storage Buffer:

PBS with 0.02% sodium azide and 50% glycerol, pH7.3

Aliquoting is unnecessary for -20°C storage

\*\*\* 20ul sizes contain 0.1% BSA

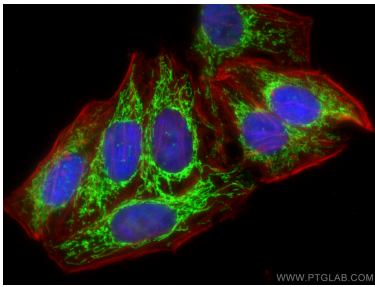
For technical support and original validation data for this product please contact:

T: 1 (888) 4PTGLAB (1-888-478-4522) (toll free in USA), or 1(312) 455-8498 (outside USA)

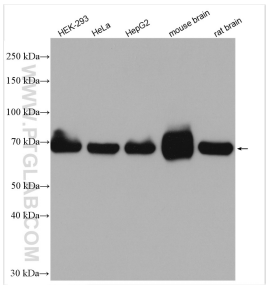
E: [proteintech@ptglab.com](mailto:proteintech@ptglab.com)  
W: [ptglab.com](http://ptglab.com)

This product is exclusively available under Proteintech Group brand and is not available to purchase from any other manufacturer.

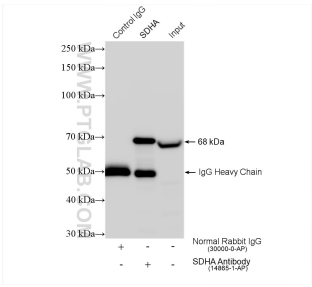
Selected Validation Data



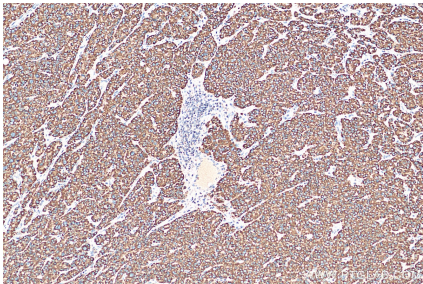
Immunofluorescent analysis of (4% PFA) fixed HepG2 cells using SDHA antibody (14865-1-AP) at dilution of 1:400 and Coralite® 488-Conjugated AffiniPure Goat Anti-Rabbit IgG(H+L), CL594-phalloidin (red).



Various lysates were subjected to SDS PAGE followed by western blot with 14865-1-AP (SDHA antibody) at dilution of 1:10000 incubated at room temperature for 1.5 hours.



IP result of anti-SDHA (IP:14865-1-AP, 4ug; Detection:14865-1-AP 1:20000) with HEK-293 cells lysate 960 ug.



Immunohistochemical analysis of paraffin-embedded human liver cancer tissue slide using 14865-1-AP (SDHA antibody) at dilution of 1:200 (under 10x lens). Heat mediated antigen retrieval with Tris-EDTA buffer (pH 9.0).