

For Research Use Only

# SPCS2 Polyclonal antibody

Catalog Number: 14872-1-AP

Featured Product

2 Publications



## Basic Information

<b>Catalog Number:</b> 14872-1-AP	<b>GenBank Accession Number:</b> BC064957	<b>Purification Method:</b> Antigen affinity purification
<b>Size:</b> 150ul , Concentration: 600 µg/ml by Nanodrop and 313 µg/ml by Bradford method using BSA as the standard;	<b>GeneID (NCBI):</b> 9789	<b>Recommended Dilutions:</b> WB 1:1000-1:4000 IP 0.5-4.0 ug for IP and 1:500-1:1000 for WB
<b>Source:</b> Rabbit	<b>Full Name:</b> signal peptidase complex subunit 2 homolog ( <i>S. cerevisiae</i> )	
<b>Isotype:</b> IgG	<b>Calculated MW:</b> 25 kDa	
<b>Immunogen Catalog Number:</b> AG6640	<b>Observed MW:</b> 25 kDa	

## Applications

**Tested Applications:**  
IP, WB, ELISA

**Cited Applications:**  
WB

**Species Specificity:**  
human, mouse, rat

**Cited Species:**  
human

**Positive Controls:**

**WB :** HeLa cells, human colon tissue, mouse stomach tissue, rat colon tissue, mouse spleen tissue, mouse colon tissue, Jurkat cells

**IP :** mouse colon tissue,

## Background Information

Signal peptidase complex subunit 2 (SPCS2) is multi-pass membrane protein as a component of the microsomal signal peptidase complex, which function to remove signal peptides from nascent proteins before translocation into the endoplasmic reticulum lumen. This protein was evidenced as a 25 kDa protein with function not well known.

## Notable Publications

Author	Pubmed ID	Journal	Application
Nicolas Bloemeke	36314723	EMBO J	WB
Rong Zhang	27383988	Nature	WB

## Storage

**Storage:**

Store at -20°C. Stable for one year after shipment.

**Storage Buffer:**

PBS with 0.02% sodium azide and 50% glycerol pH 7.3.

Aliquoting is unnecessary for -20°C storage

\*\*\* 20ul sizes contain 0.1% BSA

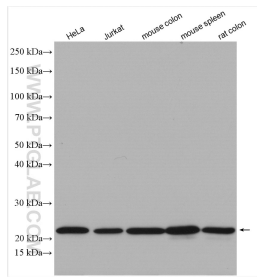
For technical support and original validation data for this product please contact:

T: 1 (888) 4PTGLAB (1-888-478-4522) (toll free in USA), or 1(312) 455-8498 (outside USA)

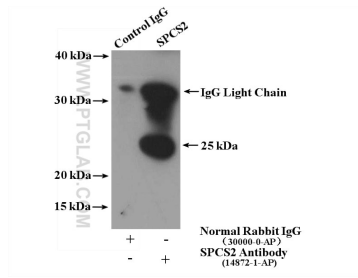
E: proteintech@ptglab.com  
W: ptglab.com

This product is exclusively available under Proteintech Group brand and is not available to purchase from any other manufacturer.

## Selected Validation Data



Various lysates were subjected to SDS PAGE followed by western blot with 14872-1-AP (SPCS2 antibody) at dilution of 1:2000 incubated at room temperature for 1.5 hours.



IP Result of anti-SPCS2 (IP:14872-1-AP, 4ug; Detection:14872-1-AP 1:500) with mouse colon tissue lysate 4000ug.