

For Research Use Only

SCLT1 Polyclonal antibody

Catalog Number: 14875-1-AP

10 Publications



Basic Information

Catalog Number:

14875-1-AP

Size:

150ul, Concentration: 600 ug/ml by Nanodrop;

Source:

Rabbit

Isotype:

IgG

Immunogen Catalog Number:

AG6646

GenBank Accession Number:

BC064428

GeneID (NCBI):

132320

UNIPROT ID:

Q96NL6

Full Name:

sodium channel and clathrin linker 1

Calculated MW:

81 kDa

Observed MW:

36 kDa, 75-80 kDa

Purification Method:

Antigen affinity purification

Recommended Dilutions:

WB: 1:1000-1:6000

IP: 0.5-4.0 ug for 1.0-3.0 mg of total protein lysate

IHC: 1:600-1:2400

IF/ICC: 1:300-1:1200

Applications

Tested Applications:

WB, IHC, IF/ICC, IP, ELISA

Cited Applications:

WB, IF

Species Specificity:

human, mouse, rat

Cited Species:

human, mouse

Note-IHC: suggested antigen retrieval with TE buffer pH 9.0; (*) Alternatively, antigen retrieval may be performed with citrate buffer pH 6.0

Positive Controls:

WB: HEK-293 cells, mouse brain tissue, COLO 320 cells, rat brain tissue, HeLa cells

IP: human placenta tissue,

IHC: human colon cancer tissue,

IF/ICC: hTERT-RPE1 cells,

Notable Publications

Author	Pubmed ID	Journal	Application
Hao Yan	32366837	Nat Commun	IF
Chuan Chen	34162535	Sci Adv	IF
Tomoharu Kanie	28625565	Dev Cell	IF

Storage

Storage:

Store at -20°C. Stable for one year after shipment.

Storage Buffer:

PBS with 0.02% sodium azide and 50% glycerol, pH7.3

Aliquoting is unnecessary for -20°C storage

*** 20ul sizes contain 0.1% BSA

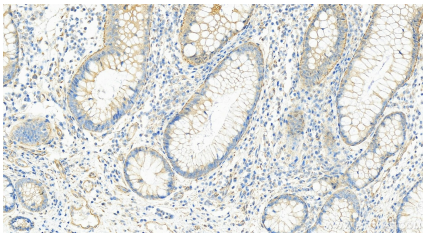
For technical support and original validation data for this product please contact:

T: 1 (888) 4PTGLAB (1-888-478-4522) (toll free in USA), or 1(312) 455-8498 (outside USA)

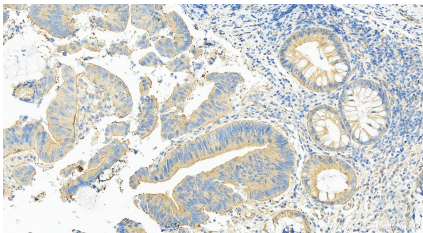
E: proteintech@ptglab.com
W: ptglab.com

This product is exclusively available under Proteintech Group brand and is not available to purchase from any other manufacturer.

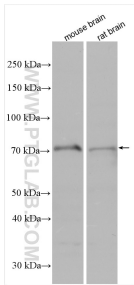
Selected Validation Data



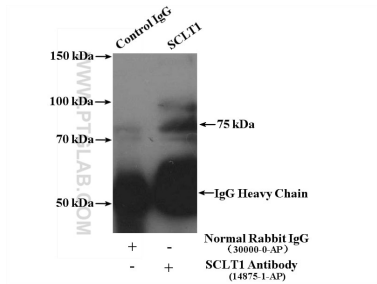
Immunohistochemical analysis of paraffin-embedded human colon cancer tissue slide using 14875-1-AP (SCLT1 antibody) at dilution of 1:1200 (under 20x lens). Heat mediated antigen retrieval with Tris-EDTA buffer (pH 9.0).



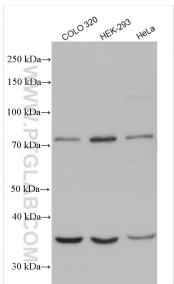
Immunohistochemical analysis of paraffin-embedded human colon cancer tissue slide using 14875-1-AP (SCLT1 antibody) at dilution of 1:1200 (under 20x lens). Heat mediated antigen retrieval with Tris-EDTA buffer (pH 9.0).



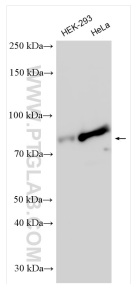
Various lysates were subjected to SDS PAGE followed by western blot with 14875-1-AP (SCLT1 antibody) at dilution of 1:1000 incubated at room temperature for 1.5 hours.



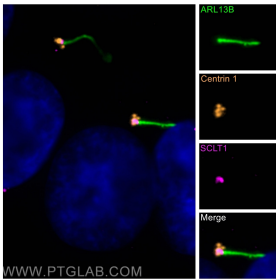
IP result of anti-SCLT1 (IP:14875-1-AP, 4ug; Detection:14875-1-AP 1:1000) with human placenta tissue lysate 4000ug.



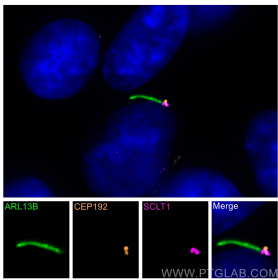
Various lysates were subjected to SDS PAGE followed by western blot with 14875-1-AP (SCLT1 antibody) at dilution of 1:1000 incubated at room temperature for 1.5 hours.



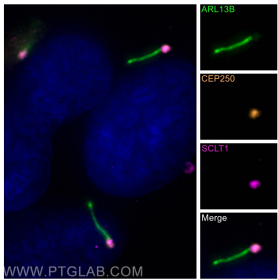
Various lysates were subjected to SDS PAGE followed by western blot with 14875-1-AP (SCLT1 antibody) at dilution of 1:3000 incubated at room temperature for 1.5 hours.



Immunofluorescent analysis of (-20°C Methanol) fixed hTERT-RPE1 cells using SCLT1 antibody (14875-1-AP) at dilution of 1:600 and CoraLite® Plus 647-conjugated AffiniPure F(ab, CoraLite® Plus 488 ARL13B antibody (CL488-17711, green), Centrin 1 antibody (12794-1-AP, orange).



Immunofluorescent analysis of (-20°C Methanol) fixed hTERT-RPE1 cells using SCLT1 antibody (14875-1-AP) at dilution of 1:600 and CoraLite® Plus 647-conjugated AffiniPure F(ab, CEP192 antibody (18832-1-AP, orange), CoraLite® Plus 488 ARL13B antibody (CL488-17711, green).



Immunofluorescent analysis of (-20°C Methanol) fixed hTERT-RPE1 cells using SCLT1 antibody (14875-1-AP) at dilution of 1:600 and CoraLite® Plus 647-conjugated AffiniPure F(ab, CoraLite® Plus 488 ARL13B antibody (CL488-17711, green), CEP250/CNAP1 antibody (14498-1-AP, orange).