

For Research Use Only

KLHL12 Polyclonal antibody

Catalog Number: 14883-1-AP

Featured Product

2 Publications



Basic Information

Catalog Number: 14883-1-AP	GenBank Accession Number: BC004175	Purification Method: Antigen affinity purification
Size: 150ul , Concentration: 600 µg/ml by Nanodrop and 360 µg/ml by Bradford method using BSA as the standard;	GeneID (NCBI): 59349	Recommended Dilutions: WB 1:500-1:2000 IHC 1:20-1:200 IF 1:20-1:200
Source: Rabbit	Full Name: kelch-like 12 (Drosophila)	
Isotype: IgG	Calculated MW: 63 kDa	
Immunogen Catalog Number: AG6658	Observed MW: 53-56 kDa, 63-67 kDa	

Applications

Tested Applications: IF, IHC, WB, ELISA	Positive Controls: WB : PC-3 cells, IHC : human testis tissue, IF : PC-3 cells,
Cited Applications: IF, WB	
Species Specificity: human, mouse, rat	
Cited Species: human	

Note-IHC: suggested antigen retrieval with TE buffer pH 9.0; (*) Alternatively, antigen retrieval may be performed with citrate buffer pH 6.0

Background Information

Notable Publications

Author	Pubmed ID	Journal	Application
David Akopian	35120648	Mol Cell	WB, IF
Chutikarn Butkinaree	24334870	Arterioscler Thromb Vasc Biol	WB, IF

Storage

Storage:
Store at -20°C. Stable for one year after shipment.
Storage Buffer:
PBS with 0.02% sodium azide and 50% glycerol pH 7.3.
Aliquoting is unnecessary for -20°C storage

*** 20ul sizes contain 0.1% BSA

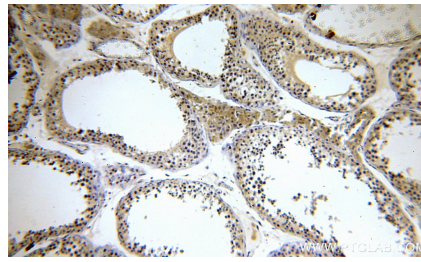
For technical support and original validation data for this product please contact:
T: 1 (888) 4PTGLAB (1-888-478-4522) (toll free in USA), or 1(312) 455-8498 (outside USA)
E: proteintech@ptglab.com
W: ptglab.com

This product is exclusively available under Proteintech Group brand and is not available to purchase from any other manufacturer.

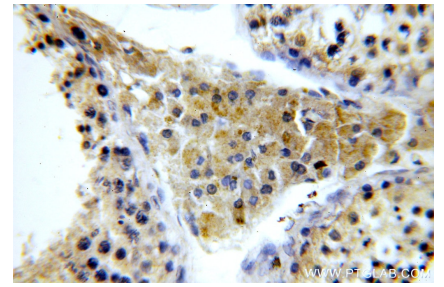
Selected Validation Data



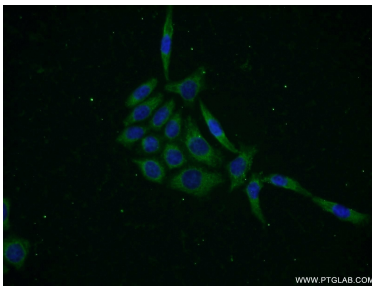
PC-3 cells were subjected to SDS PAGE followed by western blot with 14883-1-AP (KLHL12 antibody) at dilution of 1:1000 incubated at room temperature for 1.5 hours.



Immunohistochemical analysis of paraffin-embedded human testis using 14883-1-AP (KLHL12 antibody) at dilution of 1:100 (under 10x lens).



Immunohistochemical analysis of paraffin-embedded human testis using 14883-1-AP (KLHL12 antibody) at dilution of 1:100 (under 40x lens).



Immunofluorescent analysis of PC-3 cells using 14883-1-AP (KLHL12 antibody) at dilution of 1:50 and Alexa Fluor 488-conjugated AffiniPure Goat Anti-Rabbit IgG(H+L).