

For Research Use Only

ATP5D Polyclonal antibody

Catalog Number: 14893-1-AP

9 Publications



Basic Information

Catalog Number:

14893-1-AP

Size:

150ul, Concentration: 800 ug/ml by Nanodrop;

Source:

Rabbit

Isotype:

IgG

Immunogen Catalog Number:

AG6682

GenBank Accession Number:

BC002389

GeneID (NCBI):

513

UNIPROT ID:

P30049

Full Name:

ATP synthase, H⁺ transporting, mitochondrial F1 complex, delta subunit

Calculated MW:

17 kDa

Observed MW:

15-17 kDa

Purification Method:

Antigen affinity purification

Recommended Dilutions:

WB 1:1000-1:4000

IHC 1:200-1:600

Applications

Tested Applications:

WB, IHC, ELISA

Cited Applications:

WB, IF

Species Specificity:

human, mouse

Cited Species:

human, mouse

Positive Controls:

WB : A549 cells, NIH/3T3 cells, HeLa cells, HepG2 cells

IHC : human liver cancer tissue, human lung cancer tissue, human kidney tissue

Note-IHC: suggested antigen retrieval with TE buffer pH 9.0; (*) Alternatively, antigen retrieval may be performed with citrate buffer pH 6.0

Background Information

The mitochondrial F1Fo-ATP synthase complex uses energy derived from a proton gradient to synthesize ATP. The ATP5D gene encodes the delta subunit of the mitochondrial ATP synthase F1 complex and belongs to the ATPase epsilon chain family. This gene encodes the full length protein of 17 kDa with a transit peptide of 22 amino acid.

Notable Publications

Author	Pubmed ID	Journal	Application
Anaïs Aulas	30425239	Cell Death Dis	WB
Liangjun Xia	35401830	Theranostics	WB
Belén Ansoleaga	27297670	J Neuropathol Exp Neurol	IF

Storage

Storage:

Store at -20°C. Stable for one year after shipment.

Storage Buffer:

PBS with 0.02% sodium azide and 50% glycerol, pH7.3

Aliquoting is unnecessary for -20°C storage

*** 20ul sizes contain 0.1% BSA

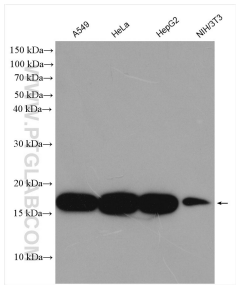
For technical support and original validation data for this product please contact:

T: 1 (888) 4PTGLAB (1-888-478-4522) (toll free in USA), or 1(312) 455-8498 (outside USA)

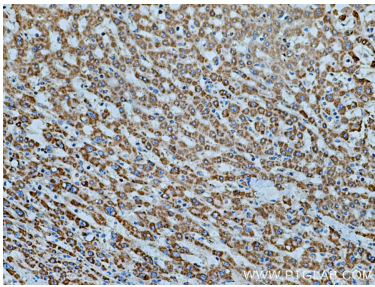
E: proteintech@ptglab.com
W: ptglab.com

This product is exclusively available under Proteintech Group brand and is not available to purchase from any other manufacturer.

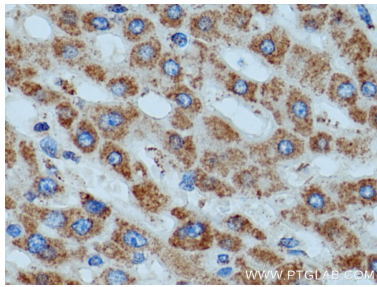
Selected Validation Data



A549 cells were subjected to SDS PAGE followed by western blot with 14893-1-AP (ATP5D antibody) at dilution of 1:2000 incubated at room temperature for 1.5 hours.



Immunohistochemical analysis of paraffin-embedded human liver cancer tissue slide using 14893-1-AP (ATP5D antibody) at dilution of 1:500 (under 10x lens). Heat mediated antigen retrieval with Tris-EDTA buffer (pH 9.0).



Immunohistochemical analysis of paraffin-embedded human liver cancer tissue slide using 14893-1-AP (ATP5D antibody) at dilution of 1:500 (under 40x lens). Heat mediated antigen retrieval with Tris-EDTA buffer (pH 9.0).